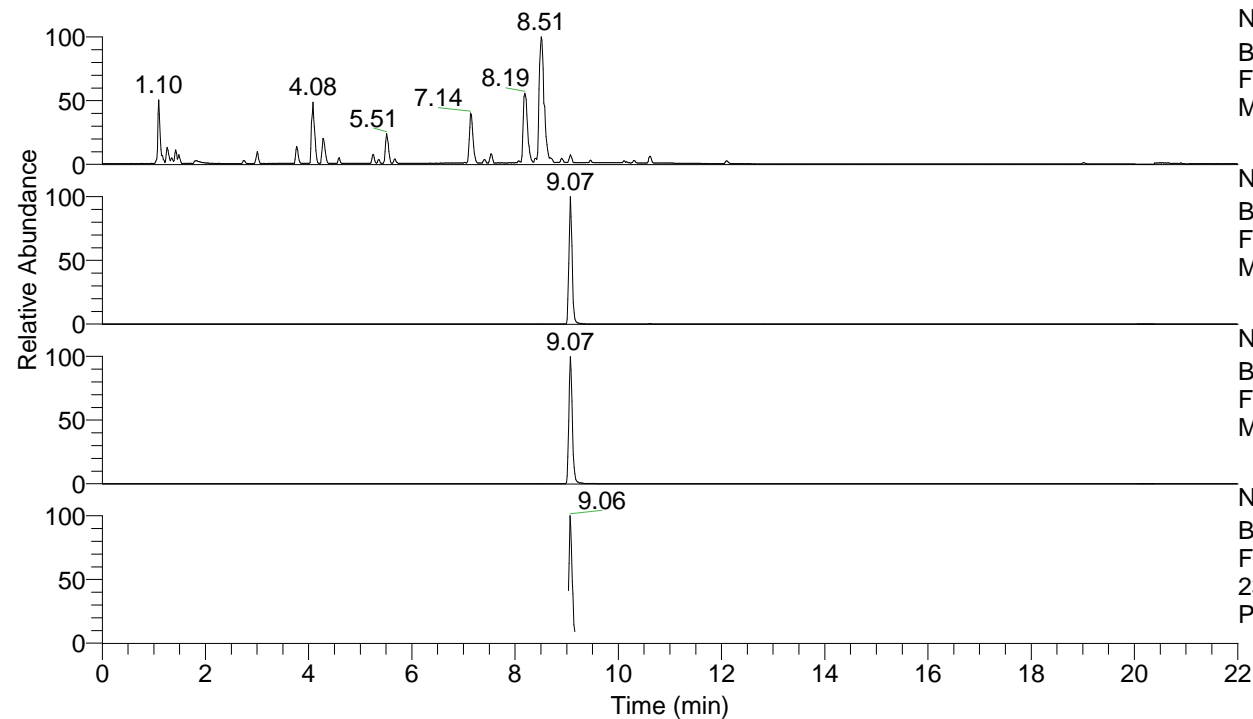


RT: 0.00 - 22.01



NL: 7.88E7
 Base Peak m/z= 100.00000-1500.00000 F:
 FTMS + p ESI Full ms [100.00-1500.00]
 MS Pbirulai

NL: 6.00E6
 Base Peak m/z= 459.35368-459.35828 F:
 FTMS + p ESI Full ms [100.00-1500.00]
 MS Pbirulai

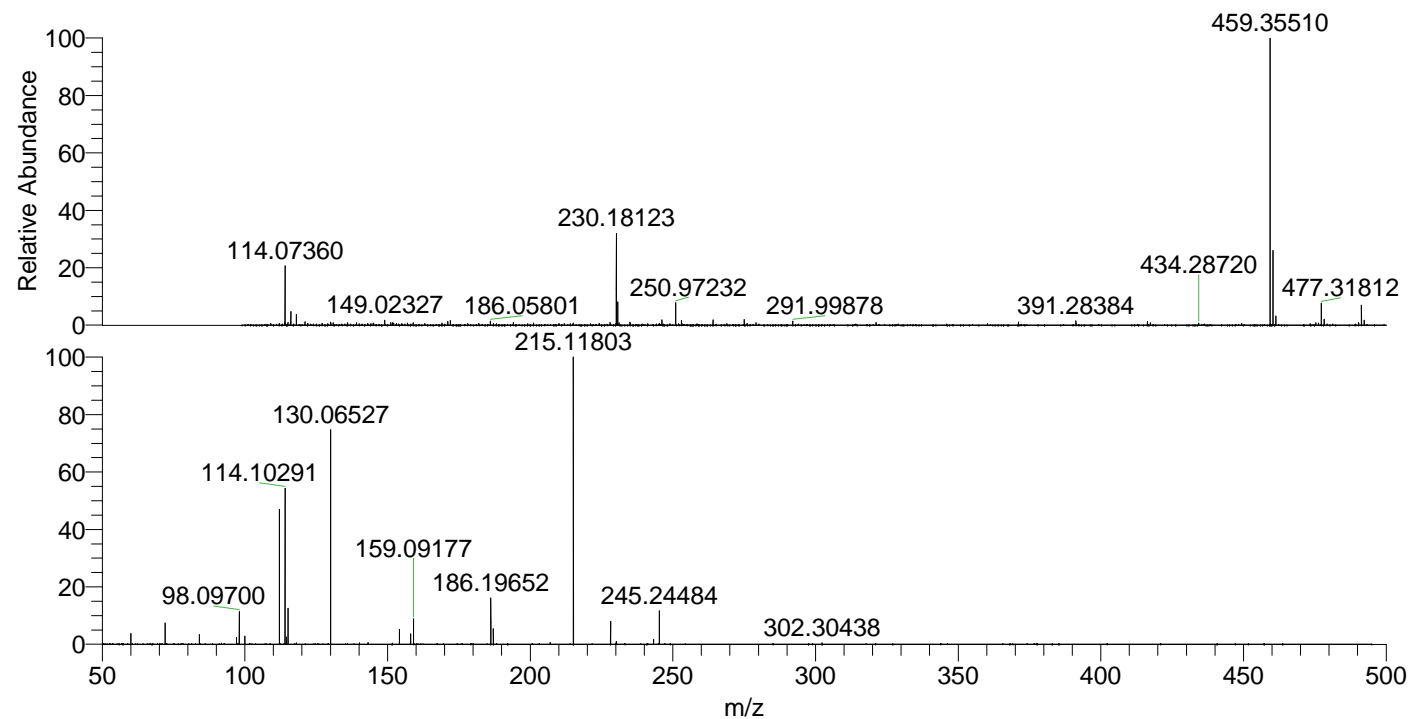
NL: 1.92E6
 Base Peak m/z= 230.18075-230.18305 F:
 FTMS + p ESI Full ms [100.00-1500.00]
 MS Pbirulai

NL: 3.05E5
 Base Peak m/z= 50.00000-1500.00000 F:
 FTMS + p ESI d Full ms2
 230.18@hcd35.00 [50.00-490.00] MS
 Pbirulai

Pbirulai#3617-3666 RT: 9.03-9.16 AV: 9

F: FTMS + p ESI d Full ms2 230.18 ...
 m/z= 50.00000-1000.00000

m/z	Intensity	Relative
60.05645	5781.4	3.72
72.08154	11625.6	7.48
84.08147	5276.6	3.40
97.07656	3670.1	2.36
98.09700	17892.5	11.52
99.98759	4507.1	2.90
112.11251	72575.2	46.71
114.10291	84082.1	54.12
114.61315	3812.8	2.45
115.12339	19472.0	12.53
117.99794	826.1	0.53
130.06527	119090.9	76.66
143.14136	900.8	0.58
154.13406	7947.0	5.12
158.06019	5712.1	3.68
159.09177	13646.5	8.78
186.19652	24854.6	16.00
187.08684	8264.8	5.32
206.97917	936.1	0.60
215.11803	155358.7	100.00
228.21821	12445.1	8.01
230.18241	1408.4	0.91
243.25495	2778.7	1.79
245.24484	17962.3	11.56
302.30438	855.7	0.55



NL: 5.96E6
 Pbirulai#3631 RT: 9.07
 AV: 1 T: FTMS + p ESI
 Full lock ms
 [100.00-1500.00]

NL: 1.54E5
 Pbirulai#3571-3698 RT:
 9.03-9.16 AV: 9 F: FTMS
 + p ESI d Full ms2
 230.18@hcd35.00
 [50.00-490.00]