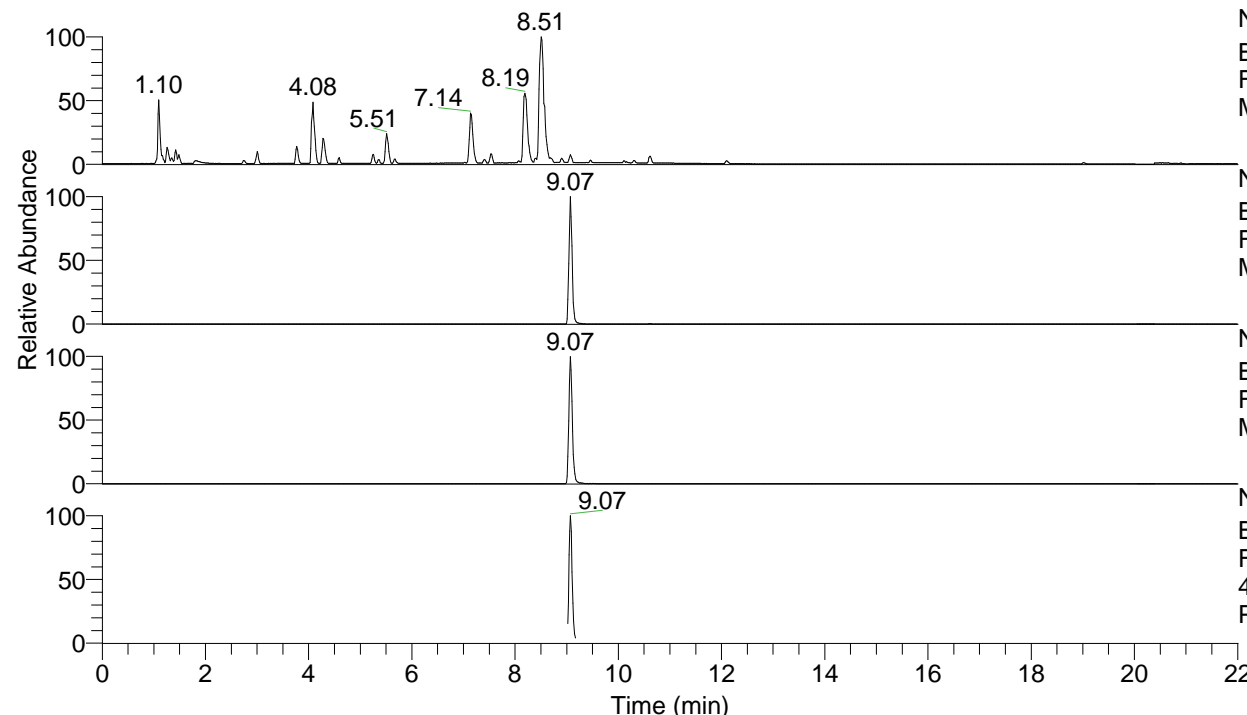


RT: 0.00 - 22.01



NL: 7.88E7
 Base Peak m/z= 100.00000-1500.00000 F:
 FTMS + p ESI Full ms [100.00-1500.00]
 MS Pbirulai

NL: 6.00E6
 Base Peak m/z= 459.35368-459.35828 F:
 FTMS + p ESI Full ms [100.00-1500.00]
 MS Pbirulai

NL: 1.92E6
 Base Peak m/z= 230.18075-230.18305 F:
 FTMS + p ESI Full ms [100.00-1500.00]
 MS Pbirulai

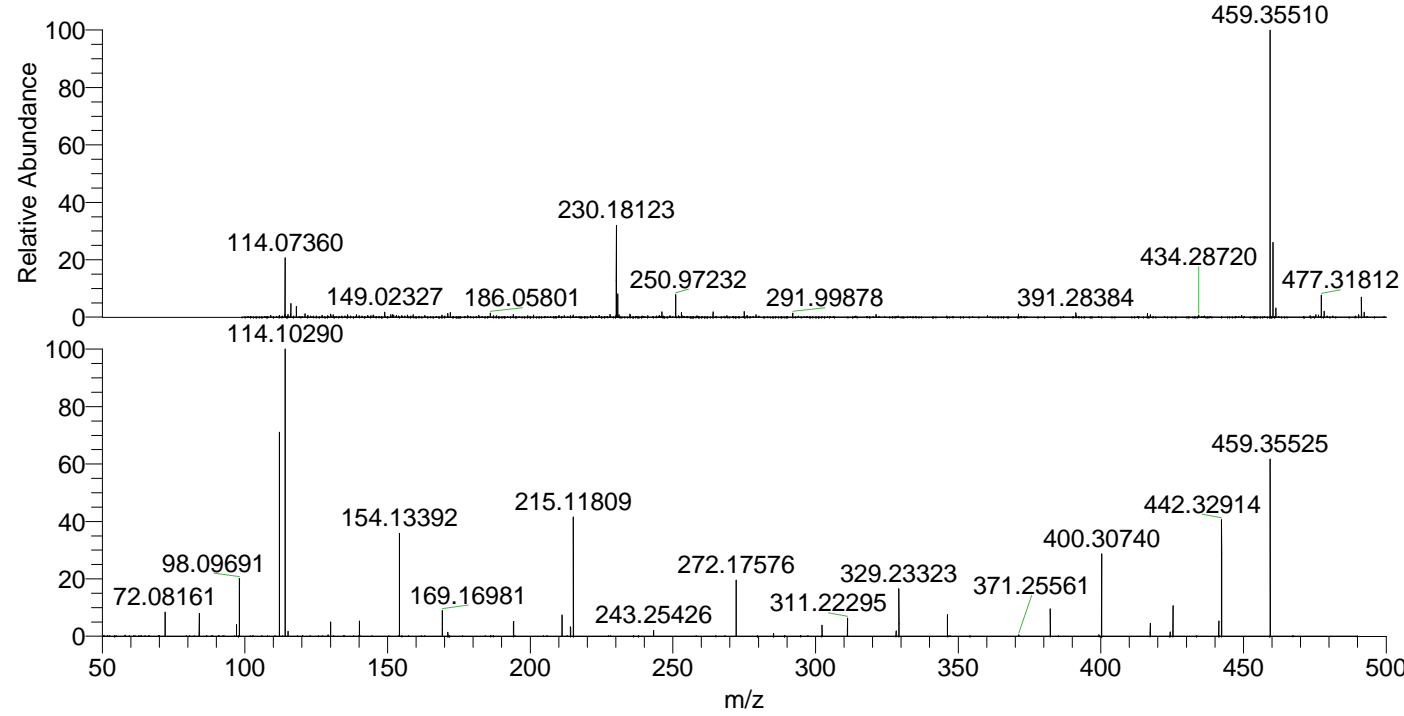
NL: 5.59E5
 Base Peak m/z= 50.00000-1500.00000 F:
 FTMS + p ESI d Full ms2
 459.36@hcd35.00 [50.00-485.00] MS
 Pbirulai

Pbirulai#3616-3650 RT: 9.03-9.12 AV: 7

F: FTMS + p ESI d Full ms2 459.36 ...

m/z= 50.00000-1000.00000

m/z	Intensity	Relative
72.08161	30026.6	8.56
84.08140	27924.9	7.96
97.07656	14273.7	4.07
98.09691	73039.5	20.81
112.11248	251059.7	71.54
114.10290	350945.4	100.00
115.12338	5919.0	1.69
130.06541	18132.4	5.17
140.11834	19118.6	5.45
154.13392	125830.1	35.85
169.16981	31635.2	9.01
171.16035	5028.4	1.43
194.16570	18475.3	5.26
211.19190	26081.0	7.43
214.13432	11586.5	3.30
215.11809	147077.0	41.91
243.25426	7137.3	2.03
272.17576	70582.5	20.11
285.27698	3514.7	1.00
302.30265	13667.8	3.89
311.22295	22449.5	6.40
328.24903	6553.7	1.87
329.23323	59337.0	16.91
346.26008	26251.2	7.48
371.25561	1839.3	0.52
382.29664	33460.1	9.53
400.30740	101986.6	29.06
417.33347	16212.4	4.62
424.31725	5296.8	1.51
425.30239	37426.4	10.66
441.34450	18384.4	5.24
442.32914	143516.5	40.89
459.35525	216847.2	61.79



NL: 5.96E6
 Pbirulai#3631 RT: 9.07
 AV: 1 T: FTMS + p ESI
 Full lock ms
 [100.00-1500.00]

NL: 3.50E5
 Pbirulai#3613-3654 RT:
 9.03-9.12 AV: 7 F: FTMS
 + p ESI d Full ms2
 459.36@hcd35.00
 [50.00-485.00]