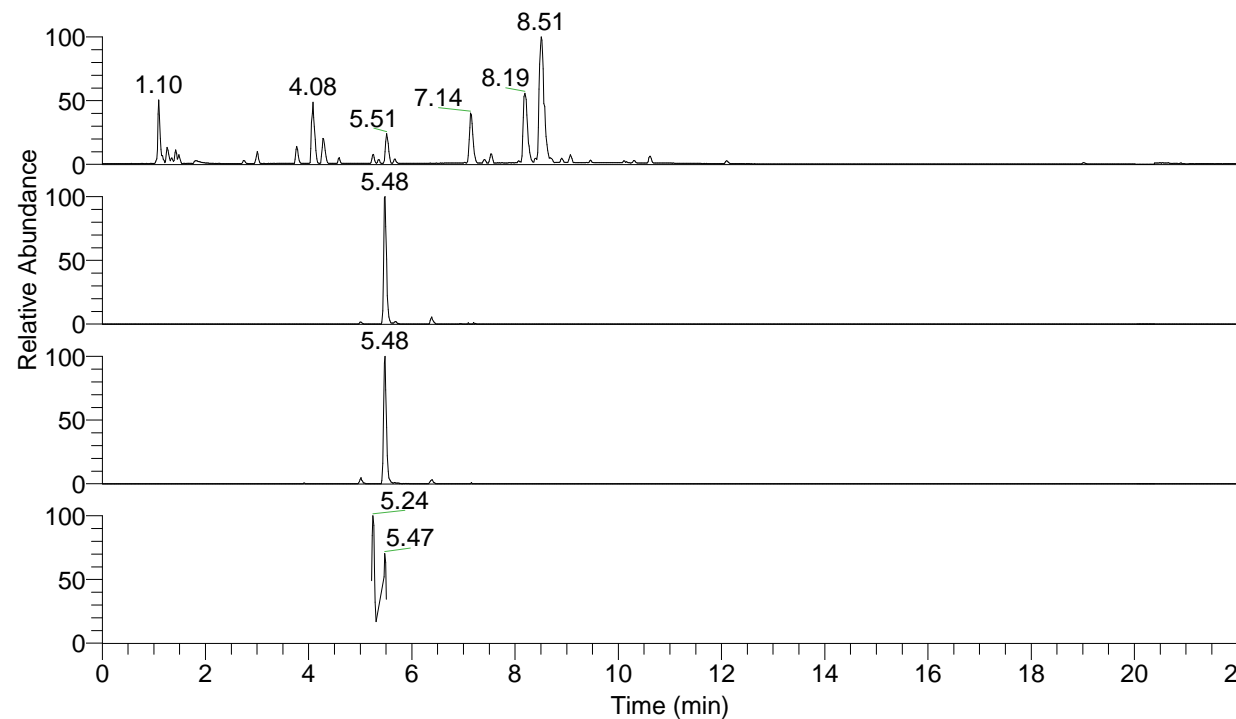


RT: 0.00 - 22.01



NL: 7.88E7
 Base Peak m/z= 100.00000-1500.00000 F:
 FTMS + p ESI Full ms [100.00-1500.00]
 MS Pbirulai

NL: 2.47E6
 Base Peak m/z= 452.33265-452.33717 F:
 FTMS + p ESI Full ms [100.00-1500.00]
 MS Pbirulai

NL: 1.17E6
 Base Peak m/z= 226.67024-226.67250 F:
 FTMS + p ESI Full ms [100.00-1500.00]
 MS Pbirulai

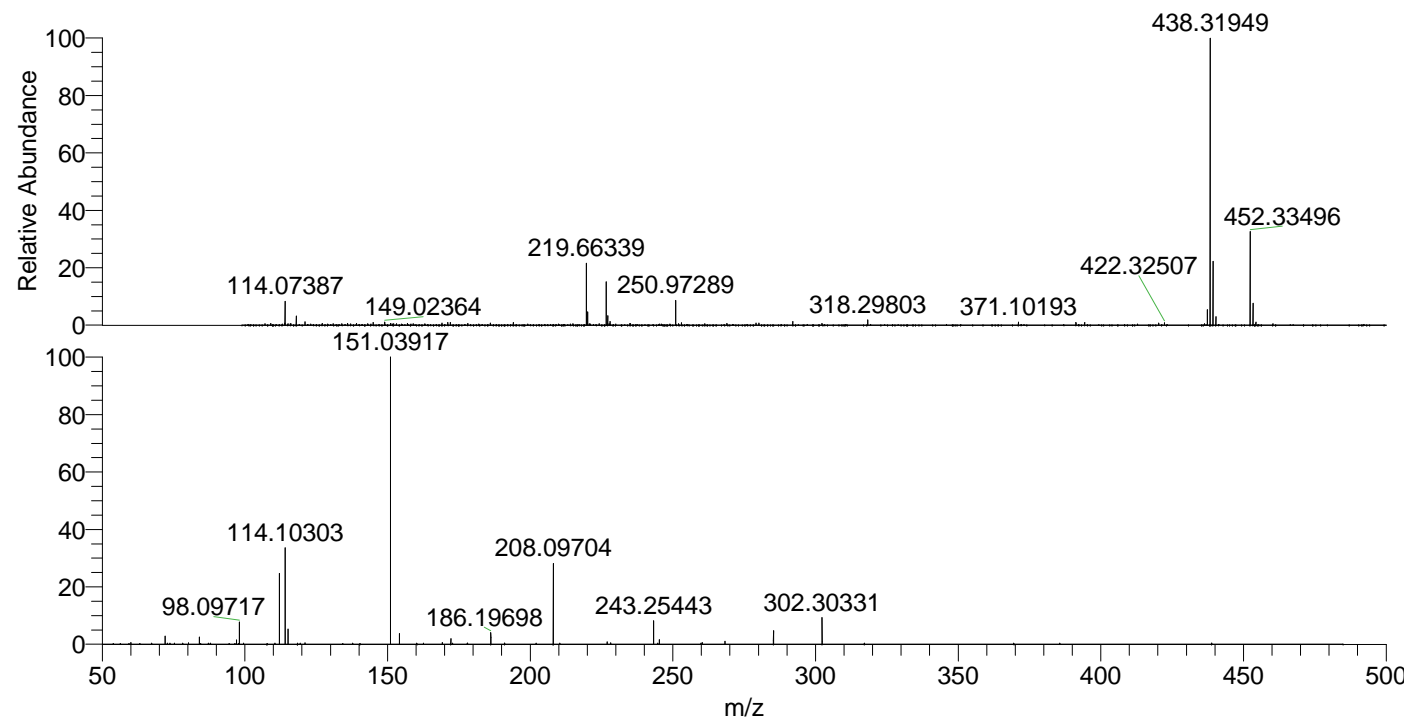
NL: 4.47E5
 Base Peak m/z= 50.00000-1500.00000 F:
 FTMS + p ESI d Full ms2
 226.67@hcd35.00 [50.00-480.00] MS
 Pbirulai

Pbirulai#2183-2201 RT: 5.46-5.50 AV: 4

F: FTMS + p ESI d Full ms2 226.67 ...

m/z= 50.00000-1000.00000

m/z	Intensity	Relative
60.05656	1178.2	0.52
72.08174	6070.5	2.66
84.08159	5923.7	2.59
97.07671	3683.9	1.61
98.09720	18355.2	8.03
112.11266	56777.5	24.85
114.09570	1255.2	0.55
114.10319	80901.1	35.41
115.12355	13078.7	5.72
121.02928	2003.9	0.88
151.03936	228464.3	100.00
154.13421	8076.8	3.54
169.17034	1277.4	0.56
172.18128	3727.2	1.63
186.19714	8185.8	3.58
208.09735	66098.5	28.93
226.95484	2491.8	1.09
243.25503	19142.3	8.38
245.24562	3943.8	1.73
260.28243	1256.3	0.55
268.24976	2090.7	0.92
285.27683	11117.7	4.87
302.30368	23090.2	10.11



NL: 7.50E6
 Pbirulai#2191 RT: 5.48
 AV: 1 T: FTMS + p ESI
 Full lock ms
 [100.00-1500.00]

NL: 2.58E5
 Pbirulai#2181-2200 RT:
 5.46-5.49 AV: 3 F: FTMS
 + p ESI d Full ms2
 226.67@hcd35.00
 [50.00-480.00]