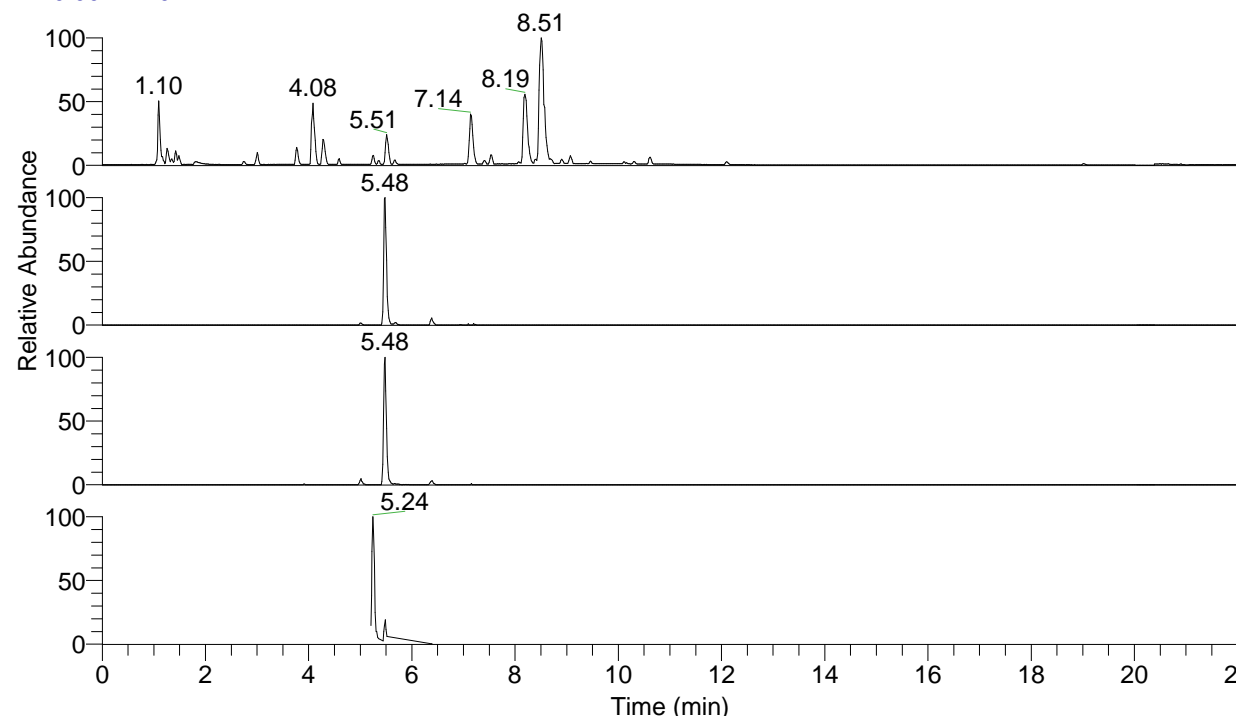


RT: 0.00 - 22.01



NL: 7.88E7
 Base Peak m/z= 100.00000-1500.00000 F:
 FTMS + p ESI Full ms [100.00-1500.00]
 MS Pbirulai

NL: 2.47E6
 Base Peak m/z= 452.33265-452.33717 F:
 FTMS + p ESI Full ms [100.00-1500.00]
 MS Pbirulai

NL: 1.17E6
 Base Peak m/z= 226.67024-226.67250 F:
 FTMS + p ESI Full ms [100.00-1500.00]
 MS Pbirulai

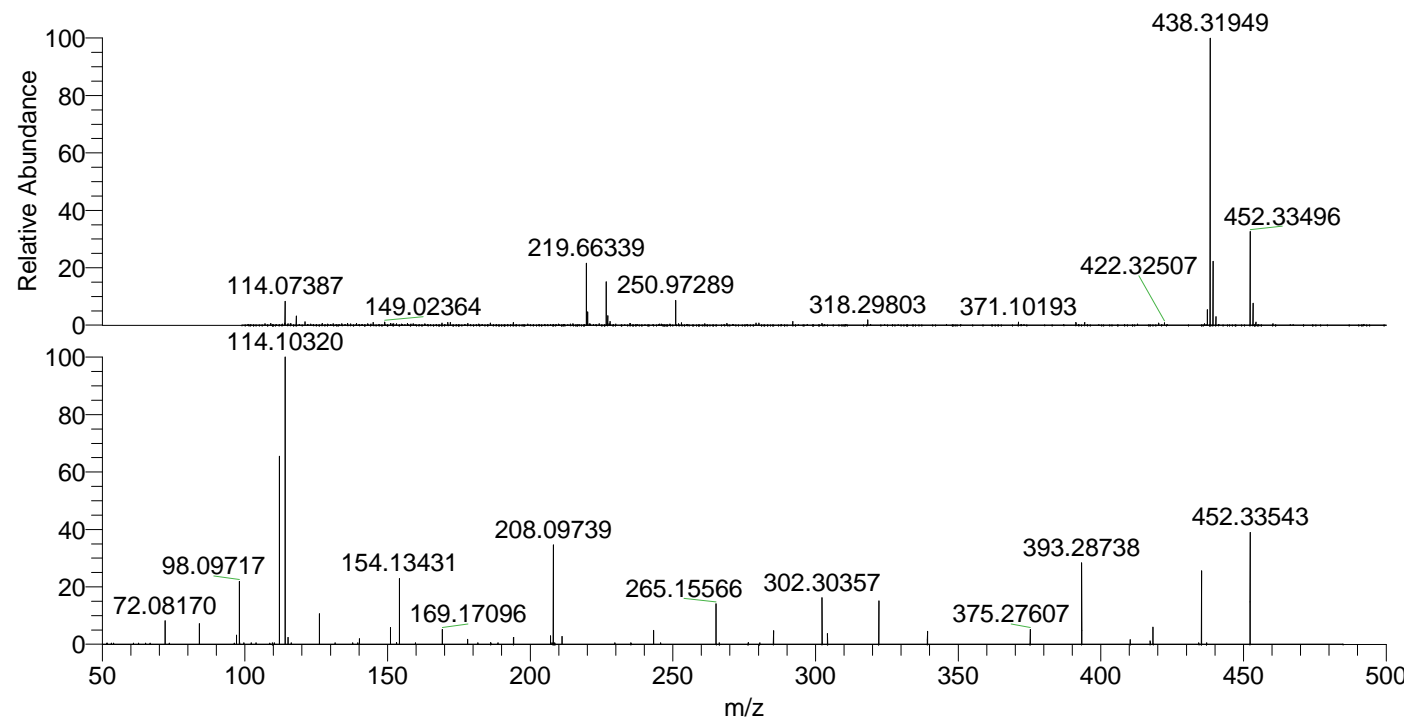
NL: 1.62E6
 Base Peak m/z= 50.00000-1500.00000 F:
 FTMS + p ESI d Full ms2
 452.33@hcd35.00 [50.00-480.00] MS
 Pbirulai

Pbirulai#2182-2199 RT: 5.46-5.50 AV: 4

F: FTMS + p ESI d Full ms2 452.33 ...

m/z= 50.00000-1000.00000

m/z	Intensity	Relative
72.08170	17296.3	8.12
84.08169	15205.7	7.14
97.07685	6861.9	3.22
98.09717	46116.1	21.65
102.20740	1080.0	0.51
103.93263	1069.2	0.50
112.11269	140221.6	65.84
114.10320	212980.8	100.00
114.11106	3448.4	1.62
115.12374	5086.0	2.39
116.29335	1096.3	0.51
126.12860	22357.4	10.50
140.11824	4041.9	1.90
151.03960	12505.4	5.87
153.17273	1242.3	0.58
154.13431	49570.8	23.27
159.74639	1142.0	0.54
169.17096	10764.7	5.05
178.08715	3652.4	1.71
186.19814	1361.0	0.64
194.16664	5010.1	2.35
207.11334	6341.1	2.98
207.71655	1078.6	0.51
208.09739	74901.6	35.17
208.63235	1143.3	0.54
211.19300	5920.2	2.78
243.25552	10158.0	4.77
245.69833	1153.5	0.54
265.15566	30757.6	14.44
276.42644	1302.8	0.61
280.45655	1075.9	0.51
285.27724	9865.0	4.63
302.30357	34096.6	16.01
304.20317	7839.9	3.68
322.21359	31575.6	14.83
339.24042	9789.6	4.60
375.27607	10941.4	5.14
393.28738	59535.8	27.95
410.31395	3314.9	1.56
417.30192	2360.4	1.11
418.28193	12644.9	5.94
434.32401	1096.2	0.51
435.30861	54295.4	25.49
437.09232	1157.2	0.54
452.33543	83073.9	39.01



NL: 7.50E6
 Pbirulai#2191 RT: 5.48
 AV: 1 T: FTMS + p ESI
 Full lock ms
 [100.00-1500.00]

NL: 2.10E5
 Pbirulai#2179-2202 RT:
 5.46-5.50 AV: 4 F: FTMS
 + p ESI d Full ms2
 452.33@hcd35.00
 [50.00-480.00]