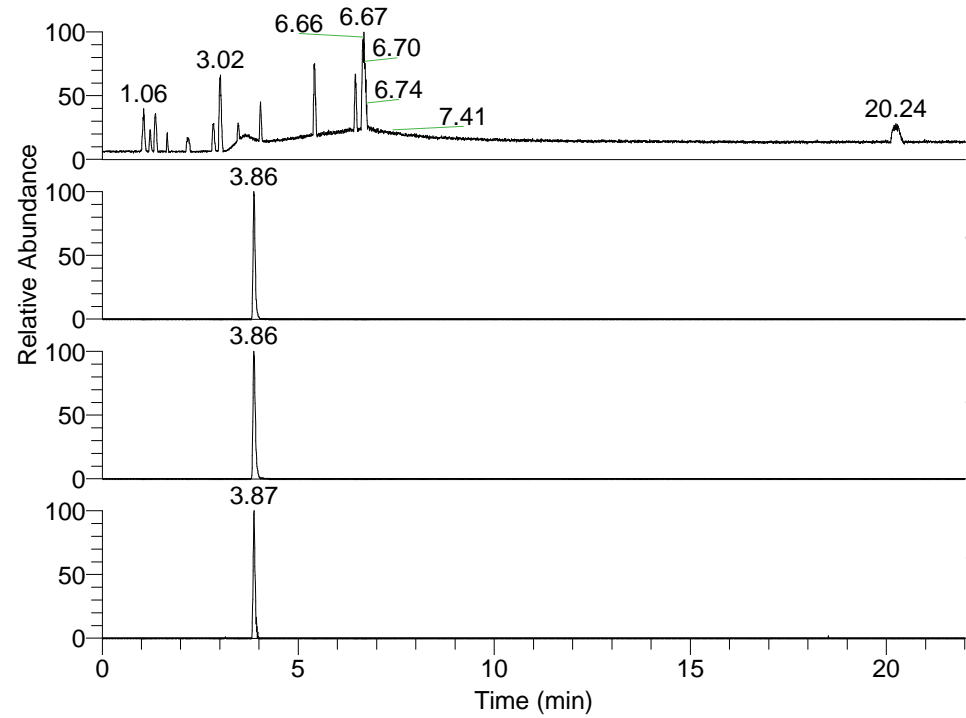


RT: 0.00 - 22.01



NL: 1.25E8  
 Base Peak m/z=  
 100.00000-1500.00000 F: FTMS + p  
 ESI Full ms [100.00-1500.00] MS  
 Pluctuosa\_HDX

NL: 7.03E6  
 Base Peak m/z=  
 457.38916-457.39374 F: FTMS + p  
 ESI Full ms [100.00-1500.00] MS  
 Pluctuosa\_HDX

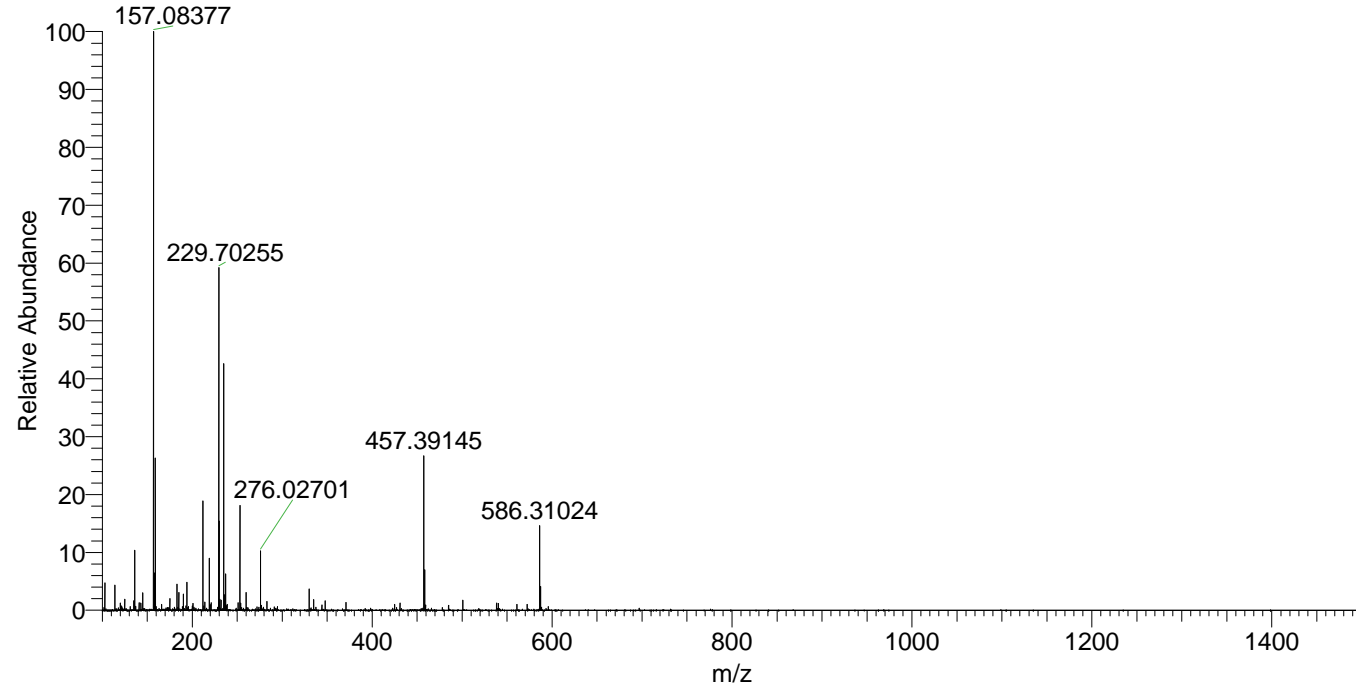
NL: 1.35E7  
 Base Peak m/z=  
 229.70163-229.70393 F: FTMS + p  
 ESI Full ms [100.00-1500.00] MS  
 Pluctuosa\_HDX

NL: 2.92E5  
 Base Peak m/z=  
 572.38773-572.39345 F: FTMS + p  
 ESI Full ms [100.00-1500.00] MS  
 Pluctuosa\_HDX

Pluctuosa\_HDX#602 RT: 3.86  
 T: FTMS + p ESI Full ms [100.00-1500.00]  
 m/z= 457.00000-458.00000

m/z	Intensity	Relative	Delta (ppm)	Composition
457.39145	5620816.0	100.00	1.20	C <sub>24</sub> H <sub>41</sub> <sup>2</sup> H <sub>5</sub> O <sub>3</sub> N <sub>5</sub>
			-2.19	C <sub>24</sub> H <sub>43</sub> <sup>2</sup> H <sub>4</sub> O <sub>3</sub> N <sub>5</sub>
			4.58	C <sub>24</sub> H <sub>39</sub> <sup>2</sup> H <sub>6</sub> O <sub>3</sub> N <sub>5</sub>

Pluctuosa\_HDX #602 RT: 3.86 AV: 1 NL: 2.04E7  
 T: FTMS + p ESI Full ms [100.00-1500.00]



Pluctuosa\_HDX #602 RT: 3.86 AV: 1 NL: 5.44E6  
 T: FTMS + p ESI Full ms [100.00-1500.00]

