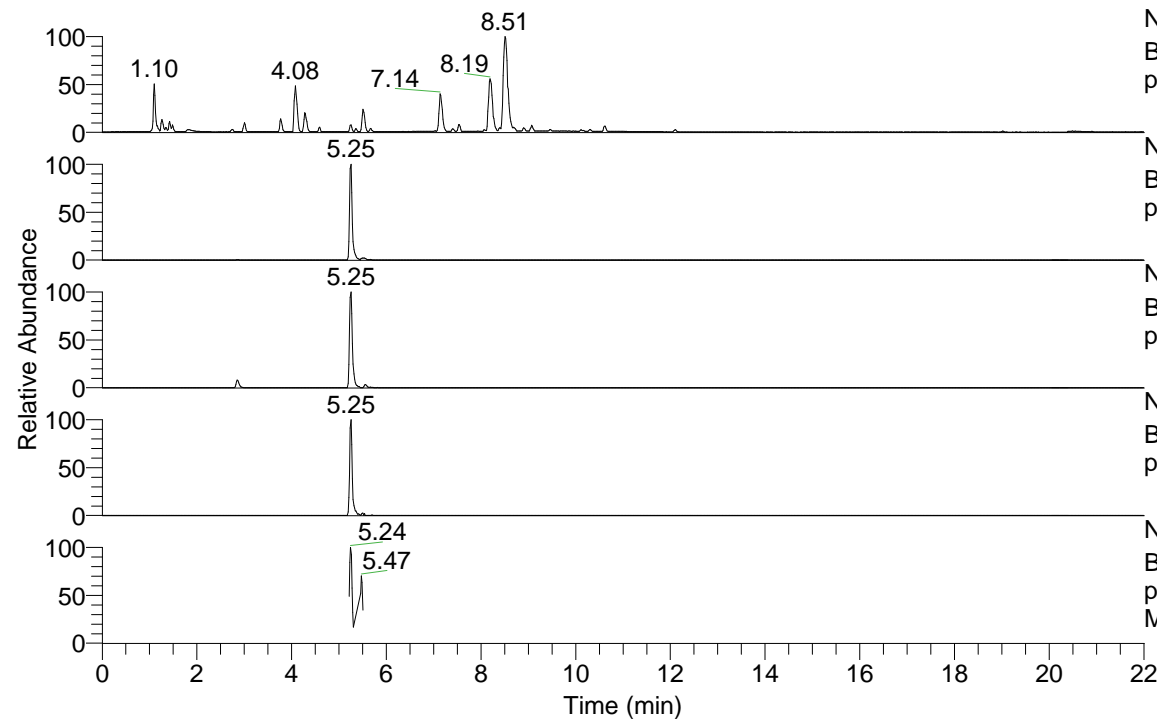


RT: 0.00 - 22.01



NL: 7.88E7
 Base Peak m/z= 100.00000-1500.00000 F: FTMS +
 p ESI Full ms [100.00-1500.00] MS Pbirulai

NL: 6.16E6
 Base Peak m/z= 452.35781-452.36233 F: FTMS +
 p ESI Full ms [100.00-1500.00] MS Pbirulai

NL: 2.45E6
 Base Peak m/z= 226.68282-226.68508 F: FTMS +
 p ESI Full ms [100.00-1500.00] MS Pbirulai

NL: 2.82E5
 Base Peak m/z= 566.35010-566.35576 F: FTMS +
 p ESI Full ms [100.00-1500.00] MS Pbirulai

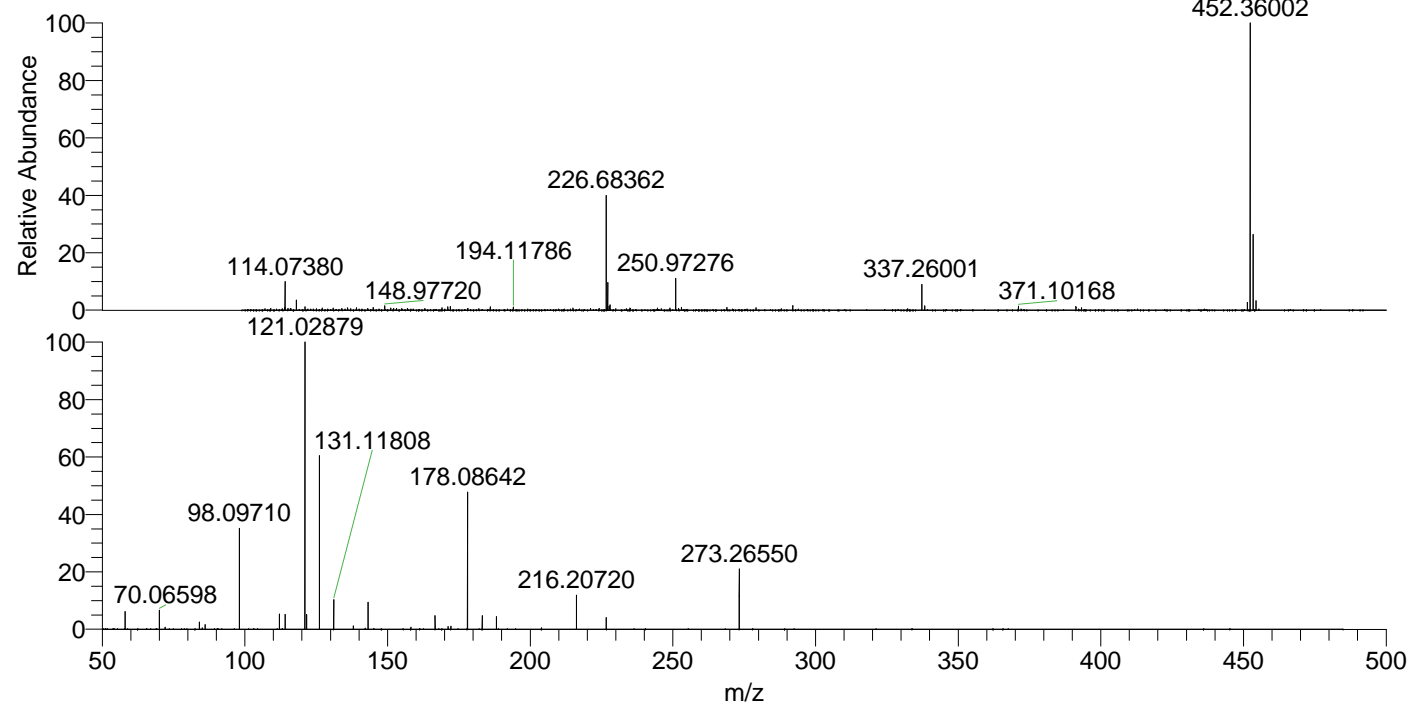
NL: 4.47E5
 Base Peak m/z= 50.00000-1500.00000 F: FTMS +
 p ESI d Full ms2 226.67@hcd35.00 [50.00-480.00]
 MS Pbirulai

Pbirulai#2087-2115 RT: 5.22-5.29 AV: 6

F: FTMS + p ESI d Full ms2 226.67 ...

m/z= 50.00000-1000.00000

m/z	Intensity	Relative
58.06605	17397.8	6.06
70.06598	18704.9	6.51
72.08151	1953.8	0.68
84.08166	7138.5	2.48
86.06091	3810.7	1.33
86.09725	4650.6	1.62
98.09710	98079.3	34.14
112.11259	14597.6	5.08
114.09185	14648.8	5.10
121.02879	287267.0	100.00
121.63358	14780.7	5.15
126.12803	169708.3	59.08
131.11808	28541.3	9.94
138.05557	3138.4	1.09
143.15460	26560.4	9.25
158.16038	2195.8	0.76
166.67353	13057.0	4.55
171.18643	2571.9	0.90
172.18105	3093.1	1.08
178.08642	132758.8	46.21
183.18610	13294.9	4.63
188.17641	12039.7	4.19
203.93953	1505.1	0.52
216.20720	33517.9	11.67
226.68421	11127.3	3.87
273.26550	58510.0	20.37



NL: 6.09E6
 Pbirulai#2101 RT: 5.25
 AV: 1 T: FTMS + p ESI
 Full lock ms
 [100.00-1500.00]

NL: 2.76E5
 Pbirulai#2083-2117 RT:
 5.22-5.29 AV: 6 F: FTMS
 + p ESI d Full ms2
 226.67@hcd35.00
 [50.00-480.00]