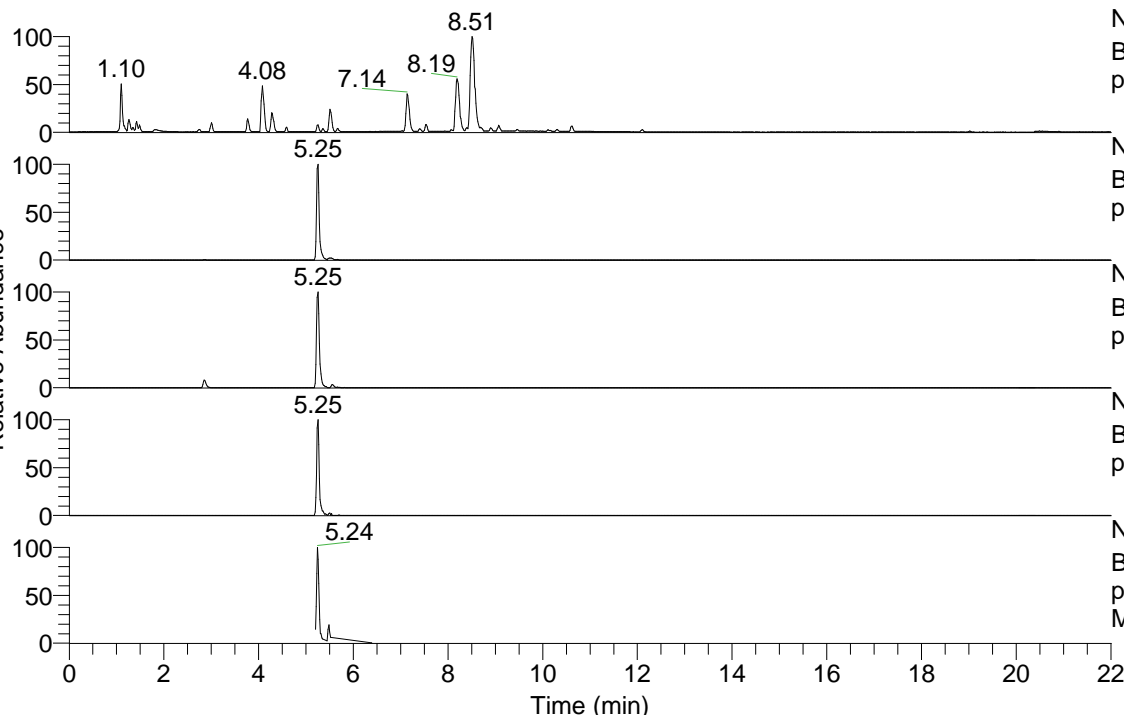


RT: 0.00 - 22.01



NL: 7.88E7  
 Base Peak m/z= 100.00000-1500.00000 F: FTMS + p ESI Full ms [100.00-1500.00] MS Pbirulai

NL: 6.16E6  
 Base Peak m/z= 452.35781-452.36233 F: FTMS + p ESI Full ms [100.00-1500.00] MS Pbirulai

NL: 2.45E6  
 Base Peak m/z= 226.68282-226.68508 F: FTMS + p ESI Full ms [100.00-1500.00] MS Pbirulai

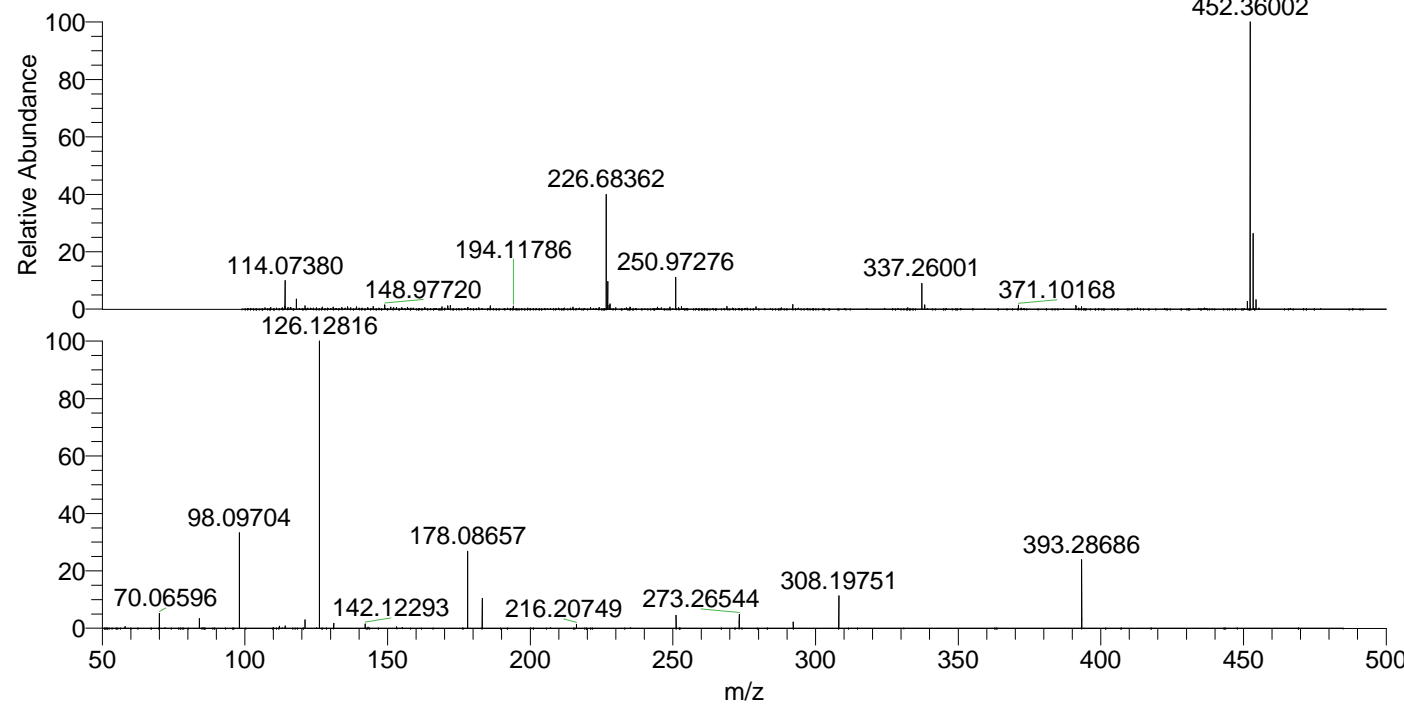
NL: 2.82E5  
 Base Peak m/z= 566.35010-566.35576 F: FTMS + p ESI Full ms [100.00-1500.00] MS Pbirulai

NL: 1.62E6  
 Base Peak m/z= 50.00000-1500.00000 F: FTMS + p ESI d Full ms2 452.33@hcd35.00 [50.00-480.00] MS Pbirulai

Pbirulai#2082-2114 RT: 5.20-5.29 AV: 7

F: FTMS + p ESI d Full ms2 452.33 ...

m/z	Intensity	Relative
58.06594	5646.5	0.65
70.06596	45948.3	5.26
84.08152	30299.1	3.47
98.09704	283962.8	32.53
112.11249	6647.3	0.76
114.09187	6716.0	0.77
121.02883	25037.7	2.87
126.12816	872881.0	100.00
131.11836	15554.0	1.78
142.12293	13340.0	1.53
178.08657	235997.8	27.04
183.18609	88709.0	10.16
216.20749	12136.7	1.39
251.13967	39685.9	4.55
273.26544	41191.1	4.72
292.20289	18112.3	2.08
308.19751	96658.4	11.07
393.28686	207110.6	23.73



NL: 6.09E6  
 Pbirulai#2101 RT: 5.25  
 AV: 1 T: FTMS + p ESI  
 Full lock ms  
 [100.00-1500.00]

NL: 8.54E5  
 Pbirulai#2078-2119 RT:  
 5.20-5.29 AV: 7 F: FTMS  
 + p ESI d Full ms2  
 452.33@hcd35.00  
 [50.00-480.00]