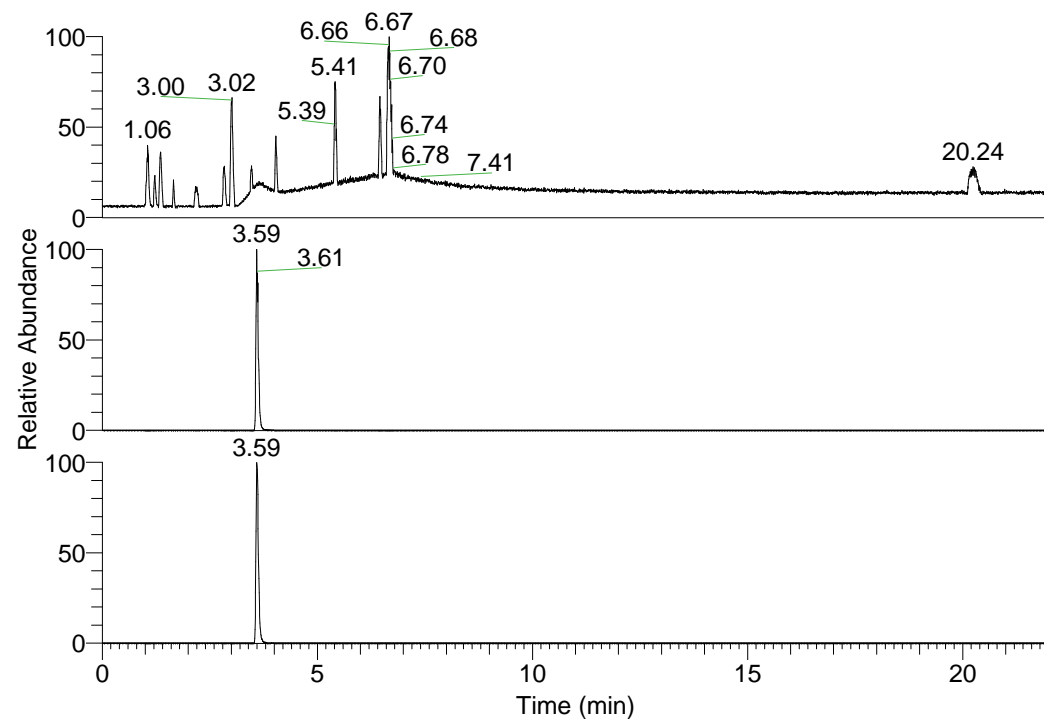


RT: 0.00 - 22.01



NL: 1.25E8
 Base Peak m/z=
 100.00000-1500.00000 F:
 FTMS + p ESI Full ms
 [100.00-1500.00] MS
 Pluctuosa_HDX

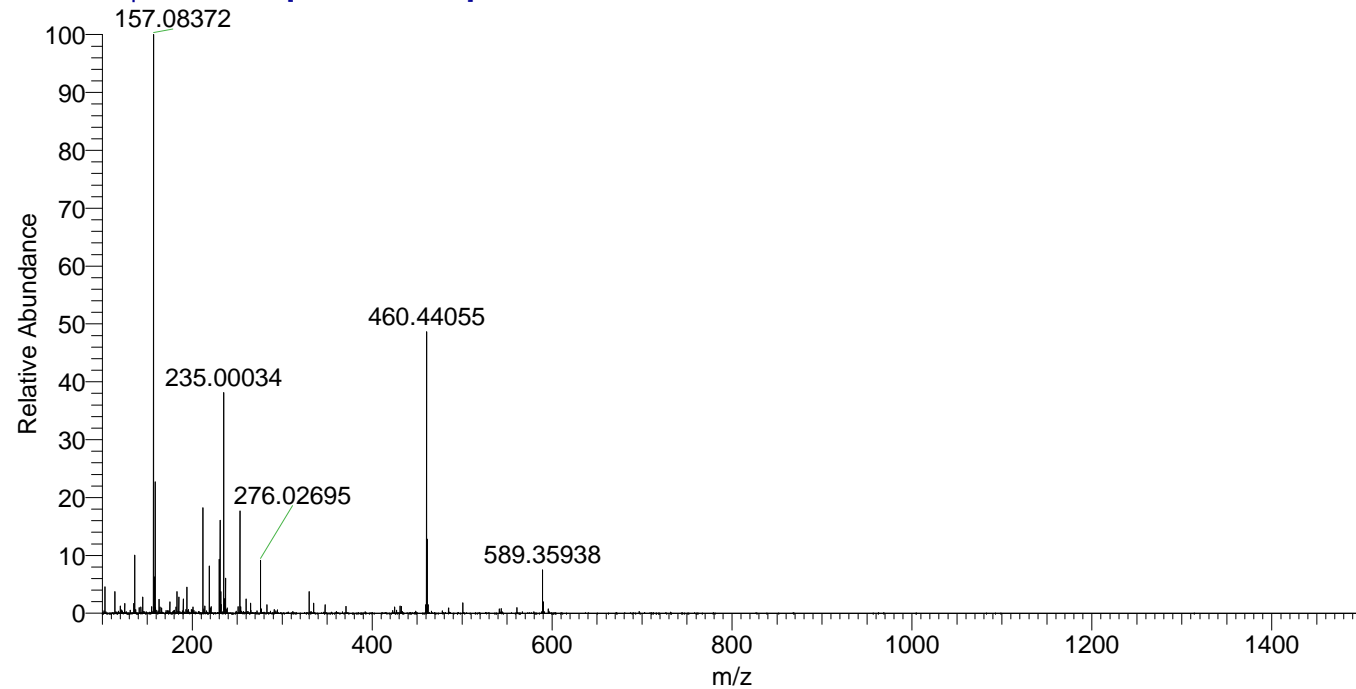
NL: 1.30E7
 Base Peak m/z=
 460.43838-460.44298 F:
 FTMS + p ESI Full ms
 [100.00-1500.00] MS
 Pluctuosa_HDX

NL: 3.86E6
 Base Peak m/z=
 231.22623-231.22855 F:
 FTMS + p ESI Full ms
 [100.00-1500.00] MS
 Pluctuosa_HDX

Pluctuosa_HDX#558 RT: 3.59
 T: FTMS + p ESI Full ms [100.00-1500.00]
 m/z = 460.00000-461.00000

m/z	Intensity	Relative	Delta (ppm)	Composition
460.44055	12210957.0	100.00	0.92	C ₂₃ H ₃₄ ² H ₁₁ ON ₈
			-2.44	C ₂₃ H ₃₆ ² H ₁₀ ON ₈
			4.28	C ₂₃ H ₃₂ ² H ₁₂ ON ₈

Pluctuosa_HDX #558 RT: 3.59 AV: 1 NL: 2.36E7
 T: FTMS + p ESI Full ms [100.00-1500.00]



Pluctuosa_HDX #558 RT: 3.59 AV: 1 NL: 1.15E7
 T: FTMS + p ESI Full ms [100.00-1500.00]

