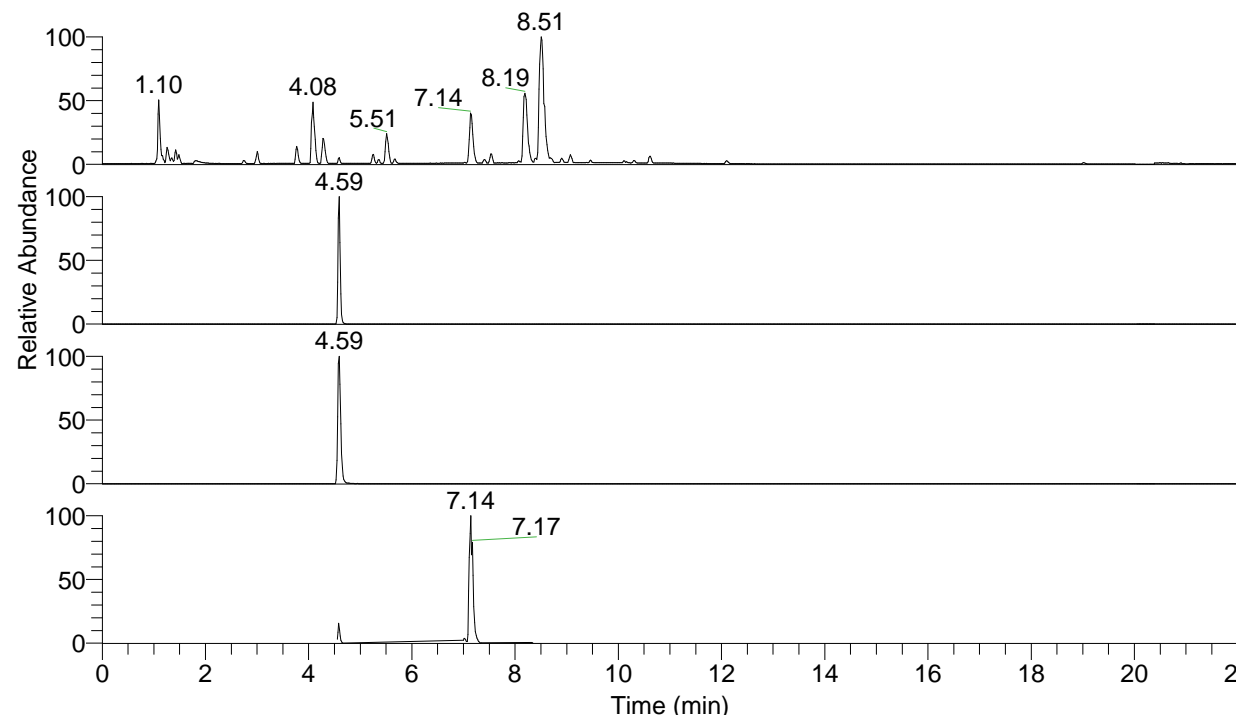


RT: 0.00 - 22.01



NL: 7.88E7
 Base Peak m/z= 100.00000-1500.00000 F:
 FTMS + p ESI Full ms [100.00-1500.00]
 MS Pbirulai

NL: 4.27E6
 Base Peak m/z= 449.36938-449.37388 F:
 FTMS + p ESI Full ms [100.00-1500.00]
 MS Pbirulai

NL: 2.19E6
 Base Peak m/z= 225.18860-225.19086 F:
 FTMS + p ESI Full ms [100.00-1500.00]
 MS Pbirulai

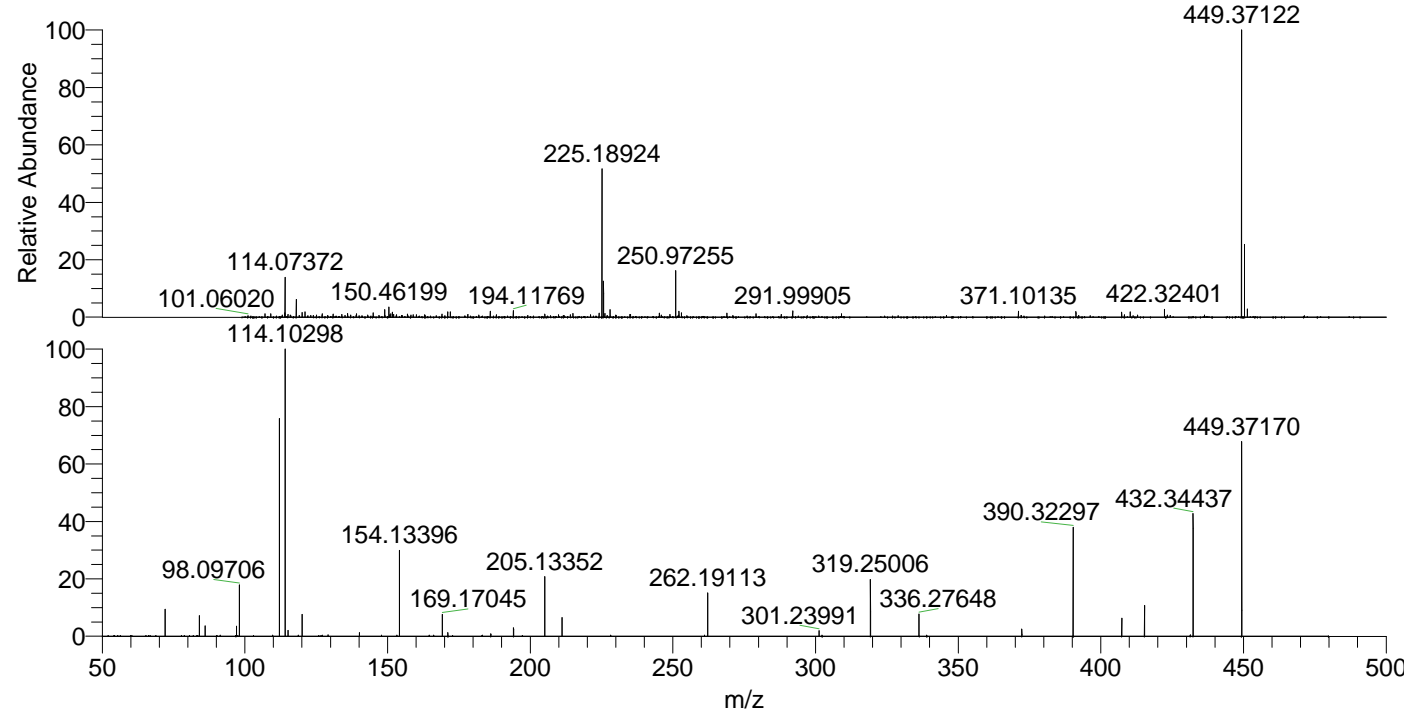
NL: 3.14E6
 Base Peak m/z= 50.00000-1500.00000 F:
 FTMS + p ESI d Full ms2
 449.32@hcd35.00 [50.00-475.00] MS
 Pbirulai

Pbirulai#1828-1844 RT: 4.57-4.61 AV: 4

F: FTMS + p ESI d Full ms2 449.32 ...

m/z= 50.00000-1000.00000

m/z	Intensity	Relative
72.08154	28008.6	9.63
84.08152	22570.8	7.76
86.06090	10077.4	3.46
97.07652	10839.4	3.73
98.09706	52268.5	17.97
112.11254	215619.0	74.12
114.10297	290922.0	100.00
115.12347	6398.0	2.20
120.08117	22242.4	7.65
129.13883	1507.2	0.52
140.11833	3991.2	1.37
154.13394	86240.5	29.64
169.17041	22732.0	7.81
171.16082	3949.3	1.36
186.19628	1808.4	0.62
194.16561	8942.5	3.07
205.13346	60847.6	20.92
211.19181	18675.5	6.42
262.19105	46410.6	15.95
301.23991	6055.1	2.08
319.25004	55742.5	19.16
336.27645	23646.3	8.13
372.31193	7712.0	2.65
390.32303	110100.3	37.85
407.34966	17566.8	6.04
415.31786	33632.3	11.56
431.35621	1533.1	0.53
432.34462	122912.3	42.25
449.37153	196443.2	67.52



NL: 4.09E6
 Pbirulai#1837 RT: 4.59
 AV: 1 T: FTMS + p ESI
 Full lock ms
 [100.00-1500.00]

NL: 2.45E5
 Pbirulai#1823-1848 RT:
 4.56-4.61 AV: 5 F: FTMS
 + p ESI d Full ms2
 449.32@hcd35.00
 [50.00-475.00]