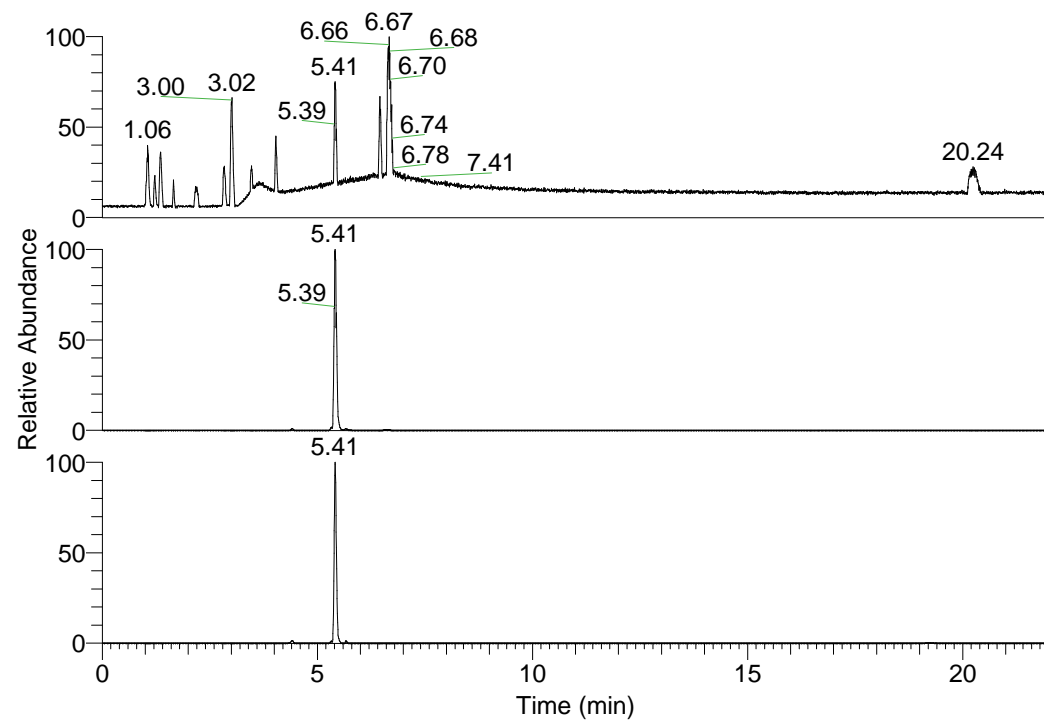


RT: 0.00 - 22.01



NL: 1.25E8  
 Base Peak m/z=  
 100.00000-1500.00000 F:  
 FTMS + p ESI Full ms  
 [100.00-1500.00] MS  
 Pluctuosa\_HDX

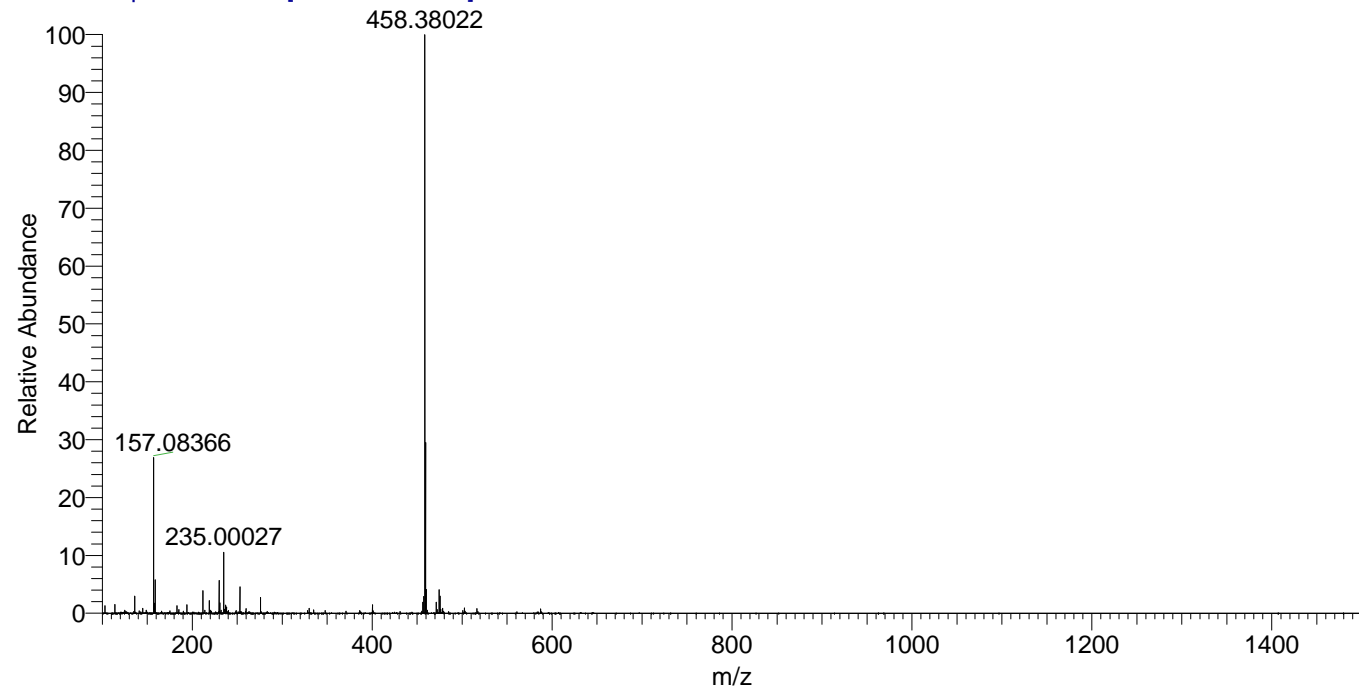
NL: 9.41E7  
 Base Peak m/z=  
 458.37822-458.38280 F:  
 FTMS + p ESI Full ms  
 [100.00-1500.00] MS  
 Pluctuosa\_HDX

NL: 5.33E6  
 Base Peak m/z=  
 230.19615-230.19845 F:  
 FTMS + p ESI Full ms  
 [100.00-1500.00] MS  
 Pluctuosa\_HDX

Pluctuosa\_HDX#855 RT: 5.41  
 T: FTMS + p ESI Full ms [100.00-1500.00]  
 m/z = 458.00000-459.00000

m/z	Intensity	Relative	Delta (ppm)	Composition
458.38022	88796376.0	100.00	0.57	C <sub>23</sub> H <sub>32</sub> <sup>2</sup> H <sub>9</sub> O <sub>3</sub> N <sub>6</sub>
			-2.81	C <sub>23</sub> H <sub>34</sub> <sup>2</sup> H <sub>8</sub> O <sub>3</sub> N <sub>6</sub>
			3.95	C <sub>23</sub> H <sub>30</sub> <sup>2</sup> H <sub>10</sub> O <sub>3</sub> N <sub>6</sub>

Pluctuosa\_HDX #855 RT: 5.41 AV: 1 NL: 8.71E7  
 T: FTMS + p ESI Full ms [100.00-1500.00]



Pluctuosa\_HDX #855 RT: 5.41 AV: 1 NL: 8.71E7  
 T: FTMS + p ESI Full ms [100.00-1500.00]

