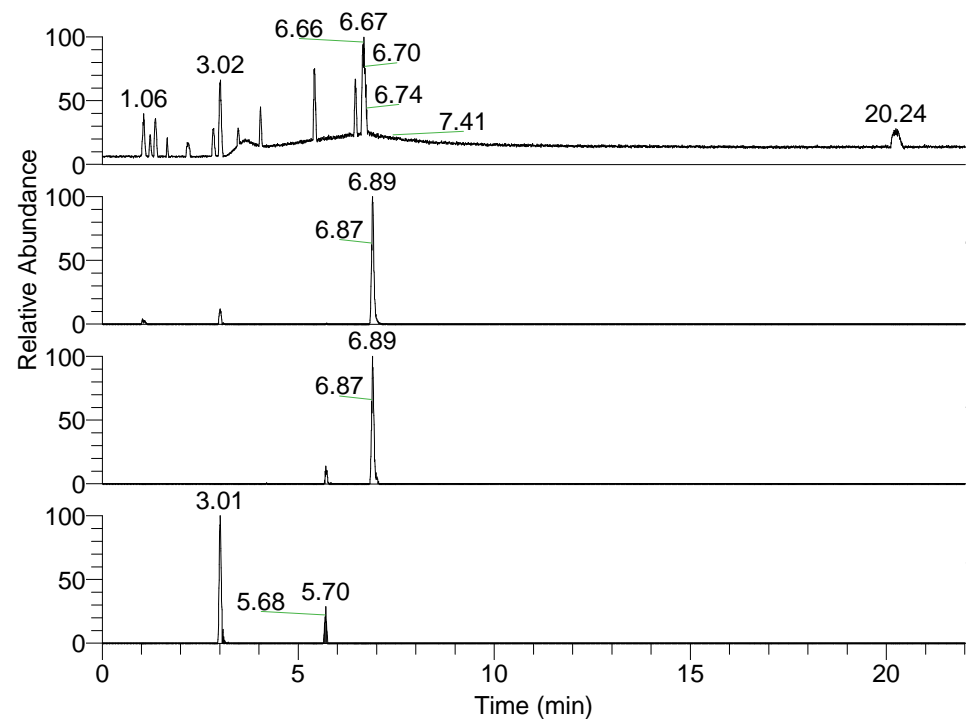


RT: 0.00 - 22.01



NL: 1.25E8
 Base Peak m/z=
 100.00000-1500.00000 F: FTMS + p
 ESI Full ms [100.00-1500.00] MS
 Pluctuosa_HDX

NL: 1.84E6
 Base Peak m/z=
 453.35788-453.36242 F: FTMS + p
 ESI Full ms [100.00-1500.00] MS
 Pluctuosa_HDX

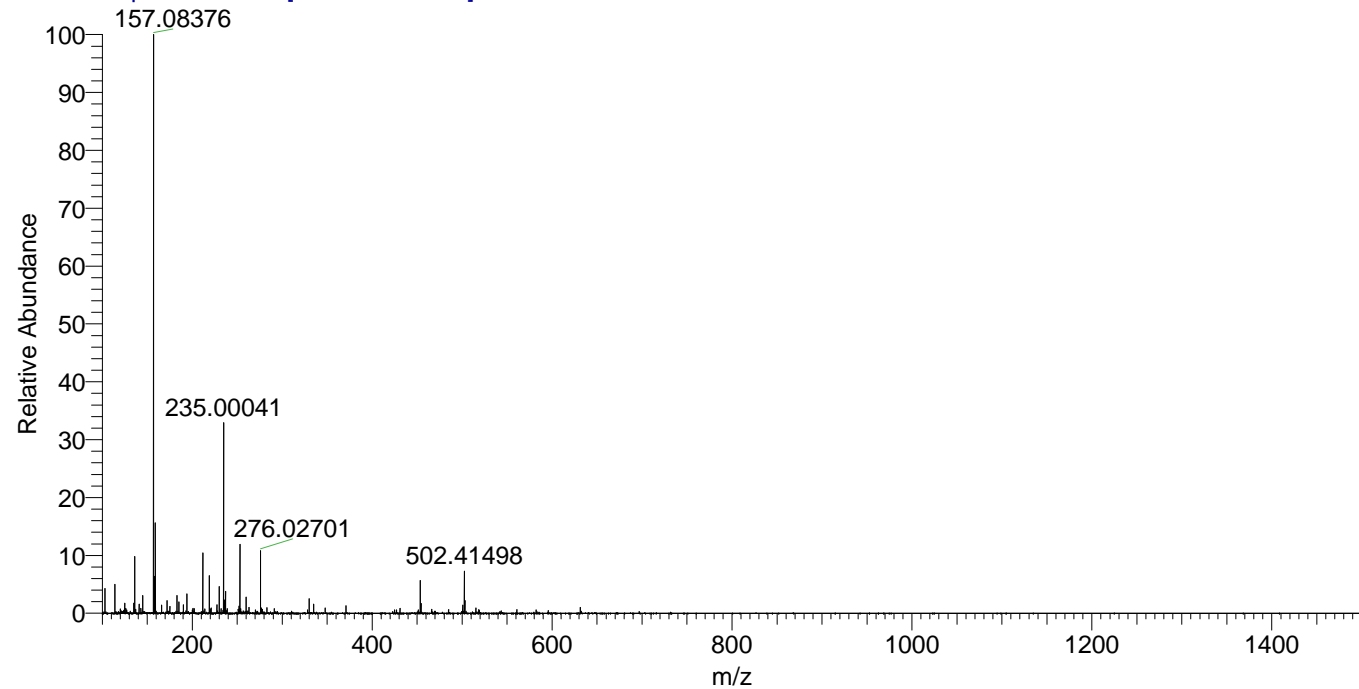
NL: 4.60E5
 Base Peak m/z=
 227.68599-227.68827 F: FTMS + p
 ESI Full ms [100.00-1500.00] MS
 Pluctuosa_HDX

NL: 4.56E5
 Base Peak m/z=
 568.35645-568.36213 F: FTMS + p
 ESI Full ms [100.00-1500.00] MS
 Pluctuosa_HDX

Pluctuosa_HDX#1106 RT: 6.89
 T: FTMS + p ESI Full ms [100.00-1500.00]
 m/z= 453.00000-454.00000

m/z	Intensity	Relative	Delta (ppm)	Composition
453.36020	1843594.5	100.00	1.32	C ₂₄ H ₃₇ ² H ₅ O ₃ N ₅
			-2.09	C ₂₄ H ₃₉ ² H ₄ O ₃ N ₅
			4.74	C ₂₄ H ₃₅ ² H ₆ O ₃ N ₅

Pluctuosa_HDX #1106 RT: 6.89 AV: 1 NL: 3.04E7
 T: FTMS + p ESI Full ms [100.00-1500.00]



Pluctuosa_HDX #1106 RT: 6.89 AV: 1 NL: 1.73E6
 T: FTMS + p ESI Full ms [100.00-1500.00]

