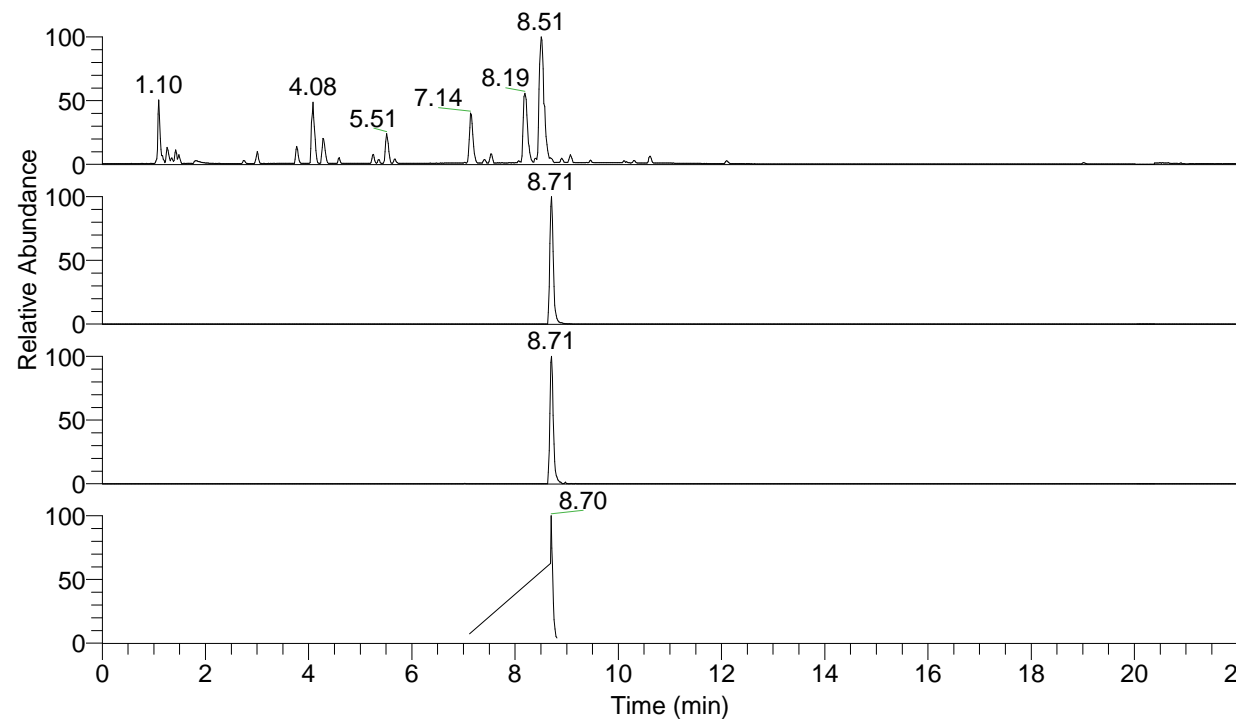


RT: 0.00 - 22.01



NL: 7.88E7
 Base Peak m/z= 100.00000-1500.00000 F:
 FTMS + p ESI Full ms [100.00-1500.00]
 MS Pbirulai

NL: 3.73E6
 Base Peak m/z= 448.32653-448.33101 F:
 FTMS + p ESI Full ms [100.00-1500.00]
 MS Pbirulai

NL: 3.76E5
 Base Peak m/z= 224.66718-224.66942 F:
 FTMS + p ESI Full ms [100.00-1500.00]
 MS Pbirulai

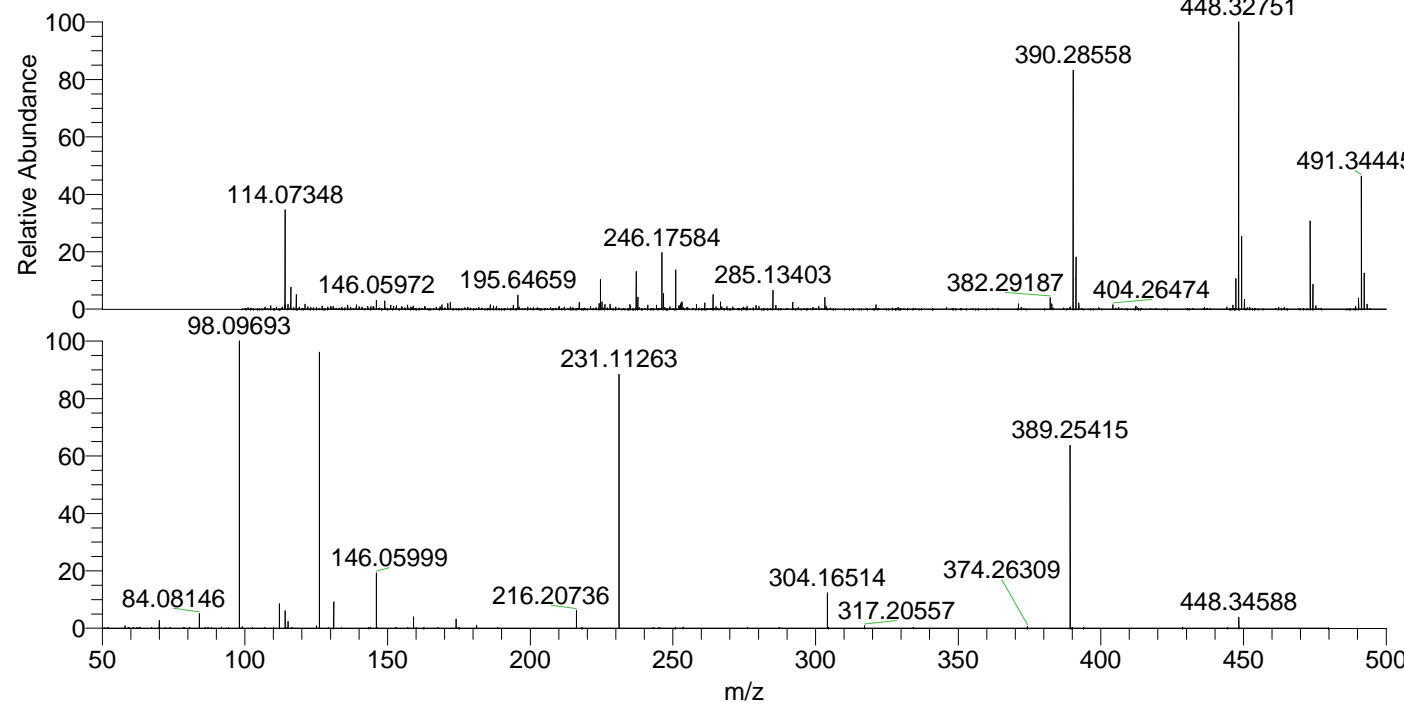
NL: 5.93E5
 Base Peak m/z= 50.00000-1500.00000 F:
 FTMS + p ESI d Full ms2
 448.32@hcd35.00 [50.00-475.00] MS
 Pbirulai

Pbirulai#3478-3500 RT: 8.68-8.74 AV: 5

F: FTMS + p ESI d Full ms2 448.32 ...

m/z= 50.00000-1000.00000

m/z	Intensity	Relative
58.06590	2756.0	0.76
70.06586	9025.0	2.47
84.08146	17023.8	4.67
98.09694	364704.1	100.00
112.11245	29886.7	8.19
114.09171	21220.9	5.82
115.12326	7960.4	2.18
125.12029	2741.4	0.75
126.12782	345360.4	94.70
131.11801	32944.1	9.03
146.06005	69497.8	19.06
159.14947	14249.8	3.91
174.05487	11586.8	3.18
181.17008	3530.0	0.97
216.20735	22423.6	6.15
231.11265	318614.9	87.36
304.16511	45381.7	12.44
317.20557	2834.4	0.78
374.26309	1959.5	0.54
389.25416	233584.2	64.05
448.34588	12524.7	3.43



NL: 3.60E6
 Pbirulai#3487 RT: 8.71
 AV: 1 T: FTMS + p ESI
 Full lock ms
 [100.00-1500.00]

NL: 4.07E5
 Pbirulai#3477-3494 RT:
 8.68-8.73 AV: 4 F: FTMS
 + p ESI d Full ms2
 448.32@hcd35.00
 [50.00-475.00]