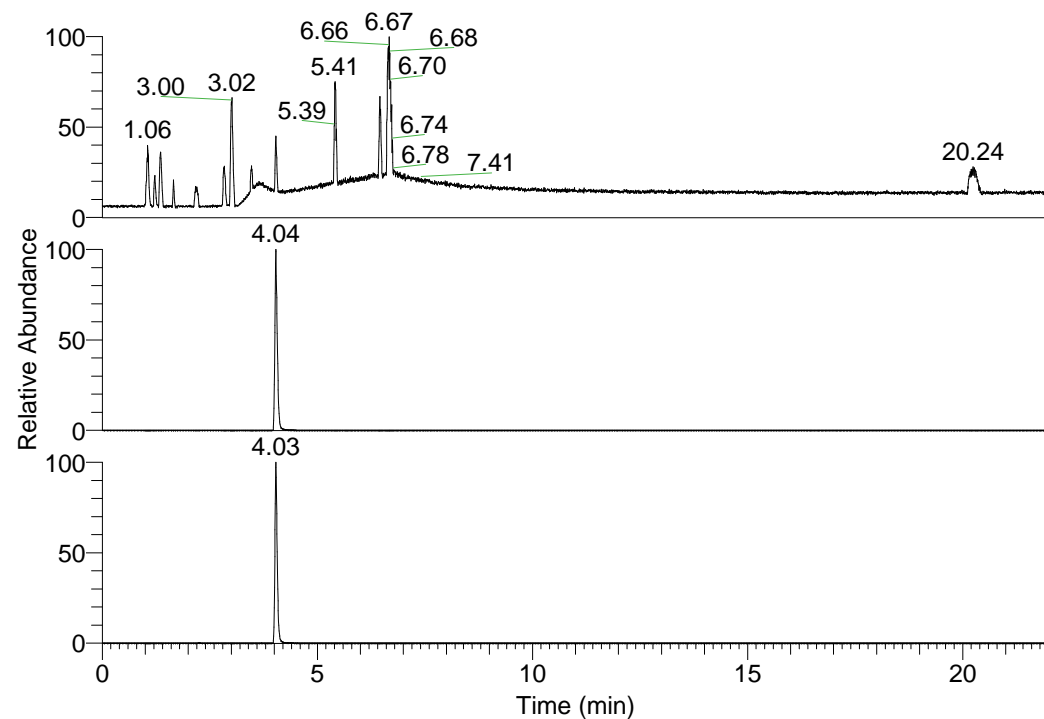


RT: 0.00 - 22.01



NL: 1.25E8
Base Peak m/z=
100.00000-1500.00000 F:
FTMS + p ESI Full ms
[100.00-1500.00] MS
Pluctuosa_HDX

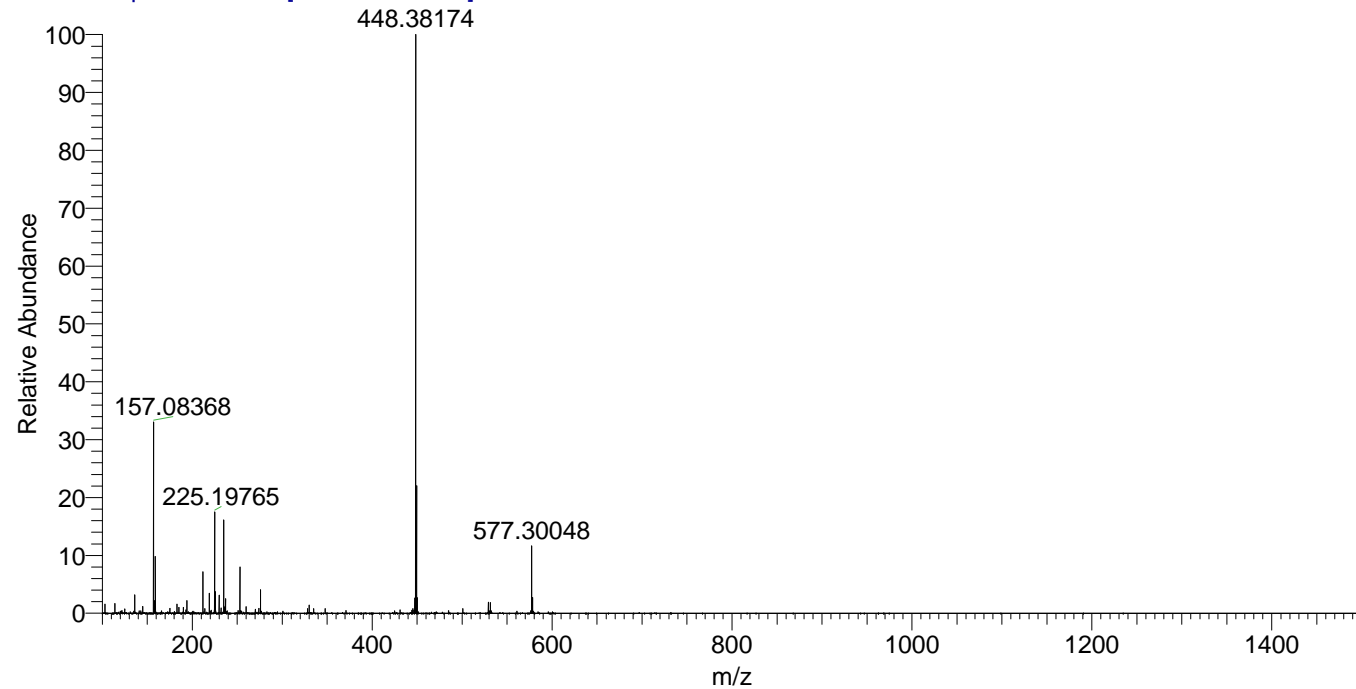
NL: 5.64E7
Base Peak m/z=
448.37979-448.38427 F:
FTMS + p ESI Full ms
[100.00-1500.00] MS
Pluctuosa_HDX

NL: 1.01E7
Base Peak m/z=
225.19694-225.19920 F:
FTMS + p ESI Full ms
[100.00-1500.00] MS
Pluctuosa_HDX

Pluctuosa_HDX#632 RT: 4.04
T: FTMS + p ESI Full ms [100.00-1500.00]
m/z = 448.00000-449.00000

m/z	Intensity	Relative	Delta (ppm)	Composition
448.38174	56446572.0	100.00	0.58	C ₂₁ H ₃₀ ² H ₁₀ O ₃ N ₇
			-2.87	C ₂₁ H ₃₂ ² H ₉ O ₃ N ₇
			4.04	C ₂₁ H ₂₈ ² H ₁₁ O ₃ N ₇

Pluctuosa_HDX #632 RT: 4.04 AV: 1 NL: 5.58E7
T: FTMS + p ESI Full ms [100.00-1500.00]



Pluctuosa_HDX #632 RT: 4.04 AV: 1 NL: 5.58E7
T: FTMS + p ESI Full ms [100.00-1500.00]

