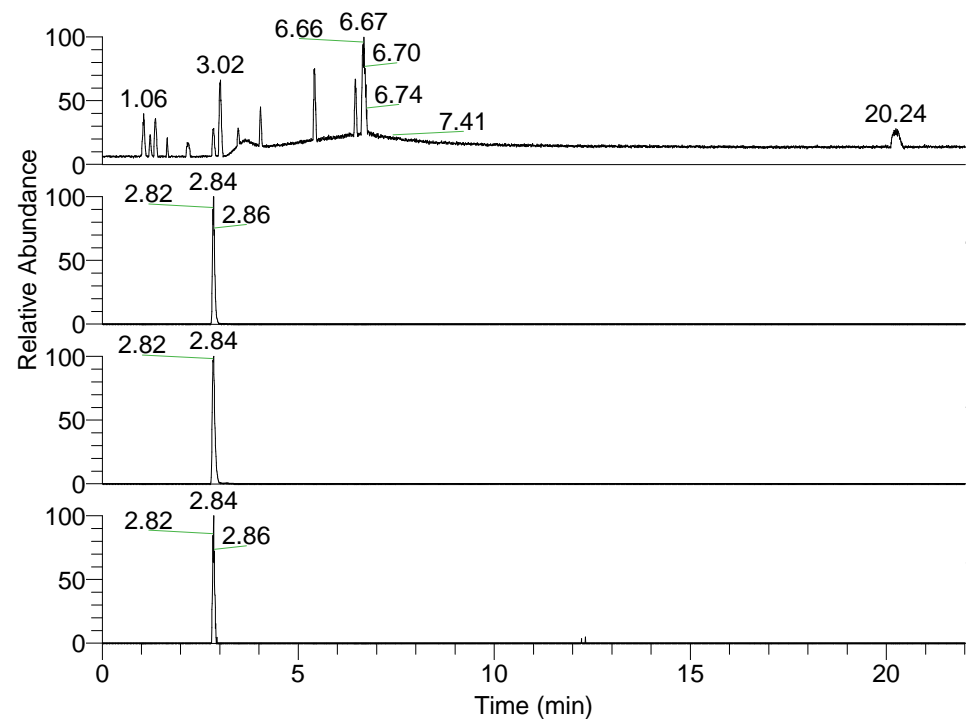


RT: 0.00 - 22.01



NL: 1.25E8
 Base Peak m/z=
 100.00000-1500.00000 F: FTMS + p
 ESI Full ms [100.00-1500.00] MS
 Pluctuosa_HDX

NL: 6.38E6
 Base Peak m/z=
 441.39433-441.39875 F: FTMS + p
 ESI Full ms [100.00-1500.00] MS
 Pluctuosa_HDX

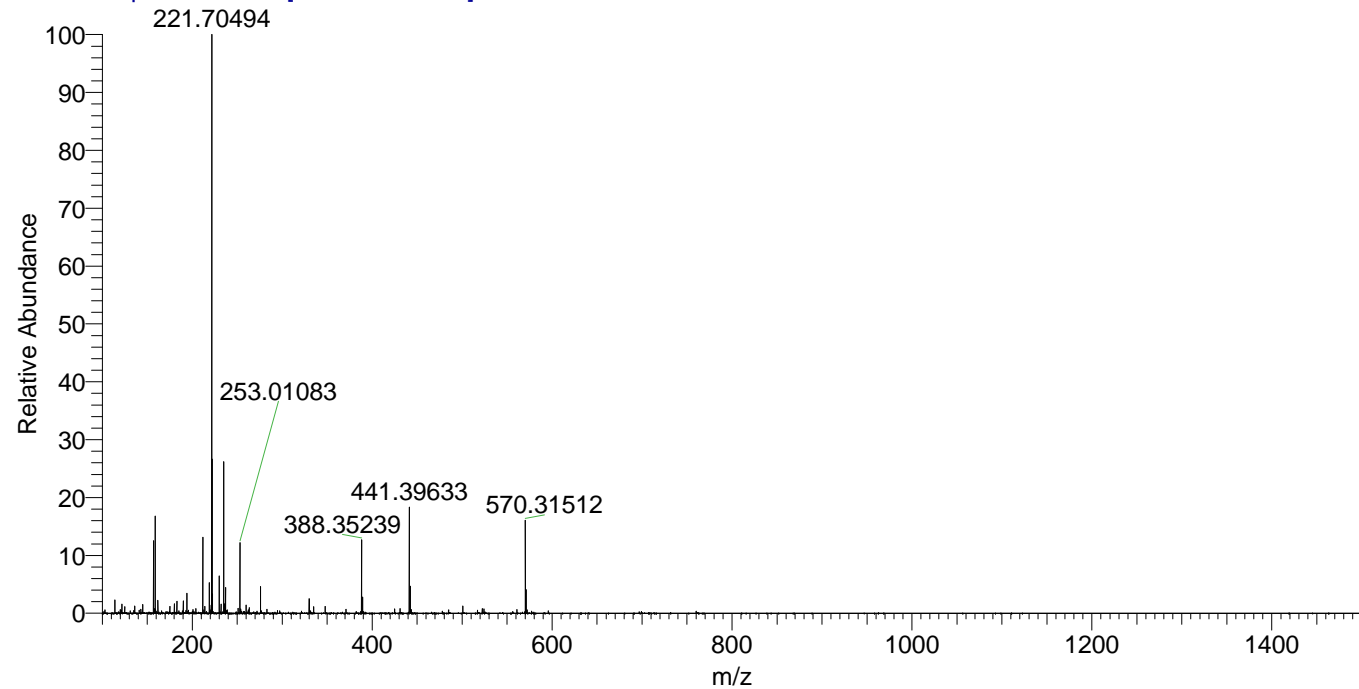
NL: 3.55E7
 Base Peak m/z=
 221.70421-221.70643 F: FTMS + p
 ESI Full ms [100.00-1500.00] MS
 Pluctuosa_HDX

NL: 1.05E5
 Base Peak m/z=
 556.39290-556.39846 F: FTMS + p
 ESI Full ms [100.00-1500.00] MS
 Pluctuosa_HDX

Pluctuosa_HDX#436 RT: 2.84
 T: FTMS + p ESI Full ms [100.00-1500.00]
 m/z= 441.00000-442.00000

| m/z | Intensity | Relative | Delta (ppm) | Composition |
|-----------|-----------|----------|-------------|---|
| 441.39633 | 6368877.5 | 100.00 | 0.78 | C ₂₄ H ₄₁ ² H ₅ O ₂ N ₅ |
| | | | -2.72 | C ₂₄ H ₄₃ ² H ₄ O ₂ N ₅ |
| | | | 4.29 | C ₂₄ H ₃₉ ² H ₆ O ₂ N ₅ |

Pluctuosa_HDX #436 RT: 2.84 AV: 1 NL: 3.44E7
 T: FTMS + p ESI Full ms [100.00-1500.00]



Pluctuosa_HDX #436 RT: 2.84 AV: 1 NL: 6.30E6
 T: FTMS + p ESI Full ms [100.00-1500.00]

