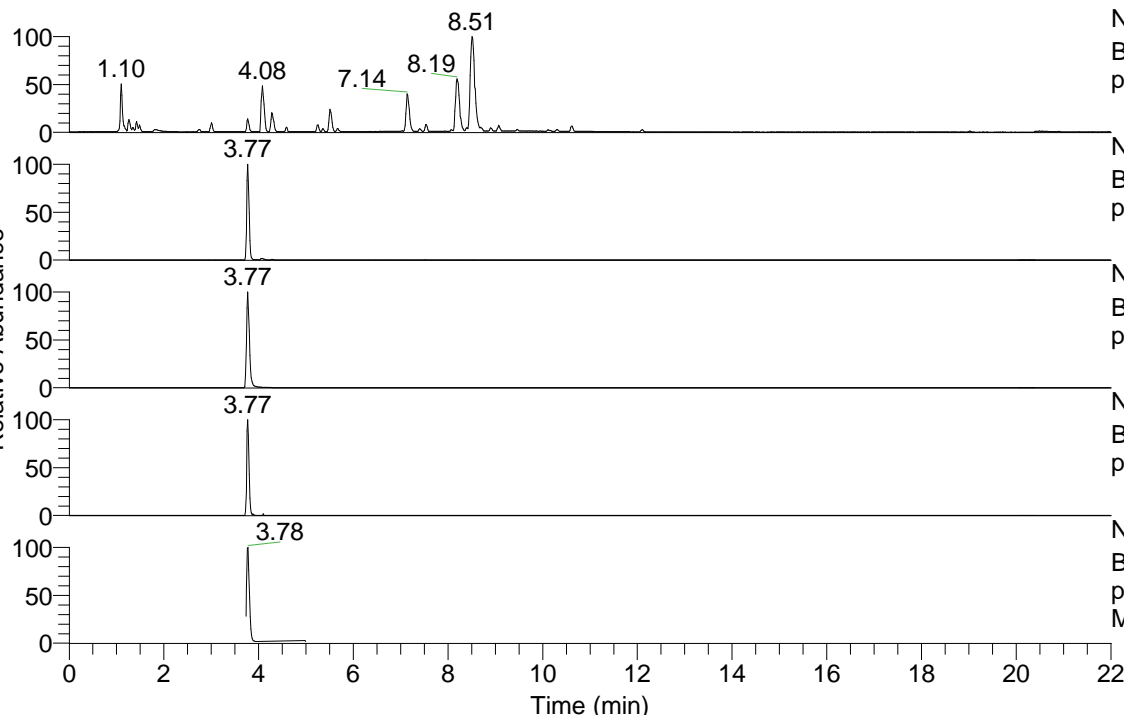


RT: 0.00 - 22.01



NL: 7.88E7  
 Base Peak m/z= 100.00000-1500.00000 F: FTMS + p ESI Full ms [100.00-1500.00] MS Pbirulai

NL: 1.11E7  
 Base Peak m/z= 436.36297-436.36733 F: FTMS + p ESI Full ms [100.00-1500.00] MS Pbirulai

NL: 6.15E6  
 Base Peak m/z= 218.68540-218.68758 F: FTMS + p ESI Full ms [100.00-1500.00] MS Pbirulai

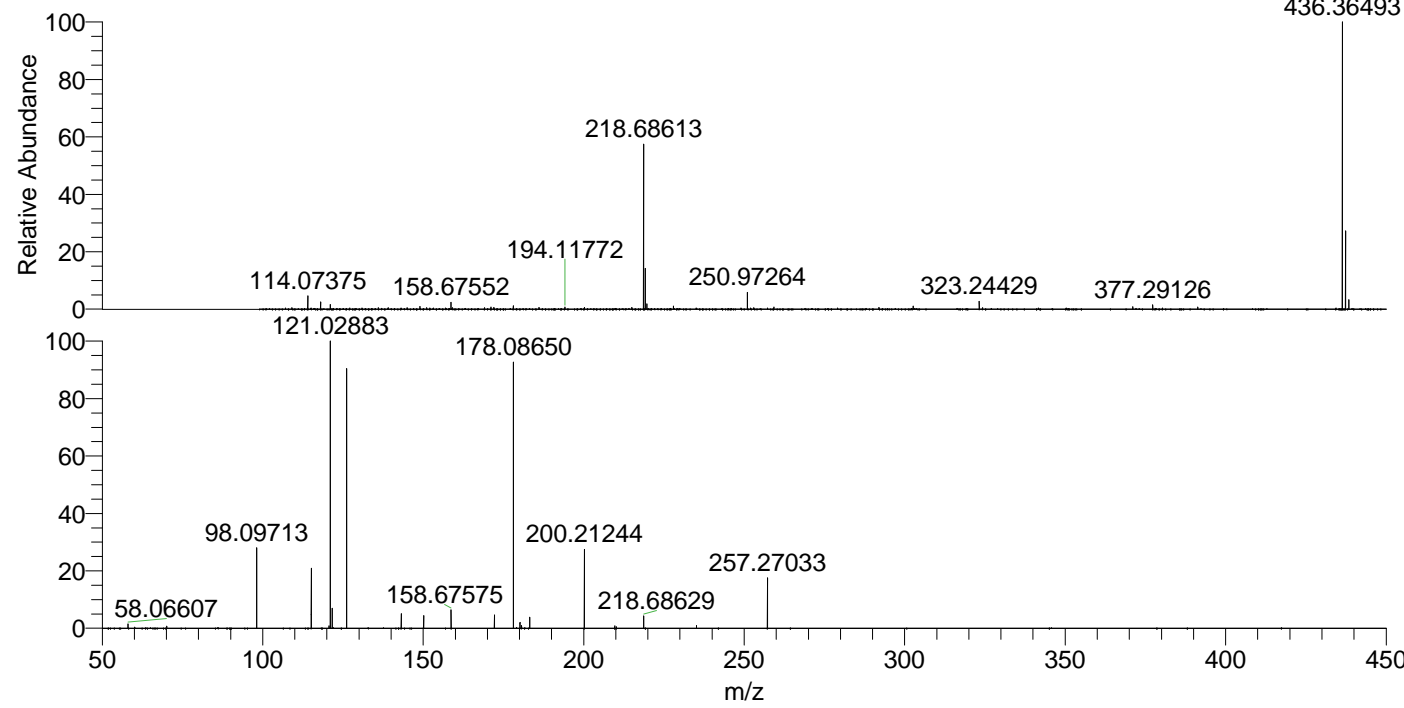
NL: 2.45E5  
 Base Peak m/z= 550.35526-550.36076 F: FTMS + p ESI Full ms [100.00-1500.00] MS Pbirulai

NL: 1.01E6  
 Base Peak m/z= 50.00000-1500.00000 F: FTMS + p ESI Full ms2 218.67@hcd35.00 [50.00-465.00] MS Pbirulai

Pbirulai#1492-1521 RT: 3.73-3.81 AV: 6

F: FTMS + p ESI d Full ms2 218.67 ...  
 m/z= 50.00000-1000.00000

m/z	Intensity	Relative
58.06606	9375.8	1.46
70.06602	4423.3	0.69
98.09712	177445.2	27.72
115.12354	131750.1	20.58
120.62596	5143.4	0.80
121.02883	640226.1	100.00
121.63358	43699.2	6.83
126.12807	569994.2	89.03
143.15445	31644.5	4.94
150.16231	25523.9	3.99
158.67573	40291.1	6.29
172.18131	29184.5	4.56
178.08647	578279.3	90.32
180.14416	12835.6	2.00
180.63624	6278.8	0.98
183.18563	23818.8	3.72
200.21239	170897.9	26.69
209.68066	4684.4	0.73
210.17250	3213.9	0.50
218.68630	25617.6	4.00
235.14444	5673.1	0.89
257.27029	109822.2	17.15



NL: 1.05E7  
 Pbirulai#1507 RT: 3.77  
 AV: 1 T: FTMS + p ESI Full lock ms [100.00-1500.00]

NL: 6.96E5  
 Pbirulai#1494-1524 RT: 3.74-3.81 AV: 5 F: FTMS + p ESI d Full ms2 218.67@hcd35.00 [50.00-465.00]