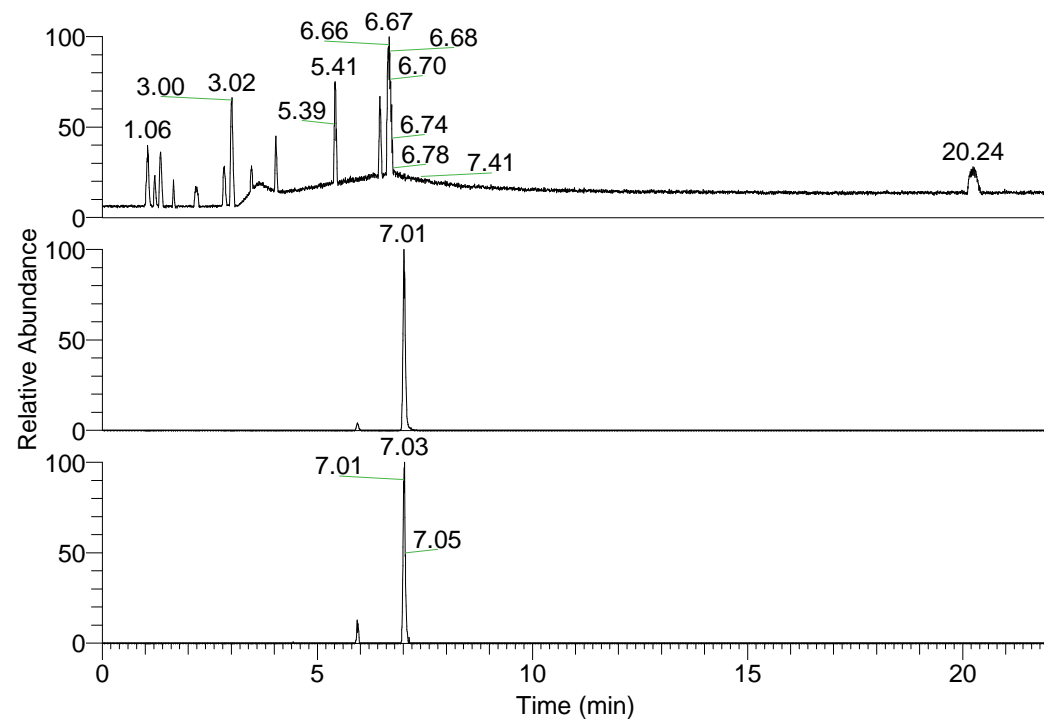


RT: 0.00 - 22.01



NL: 1.25E8  
 Base Peak m/z=  
 100.00000-1500.00000 F:  
 FTMS + p ESI Full ms  
 [100.00-1500.00] MS  
 Pluctuosa\_HDX

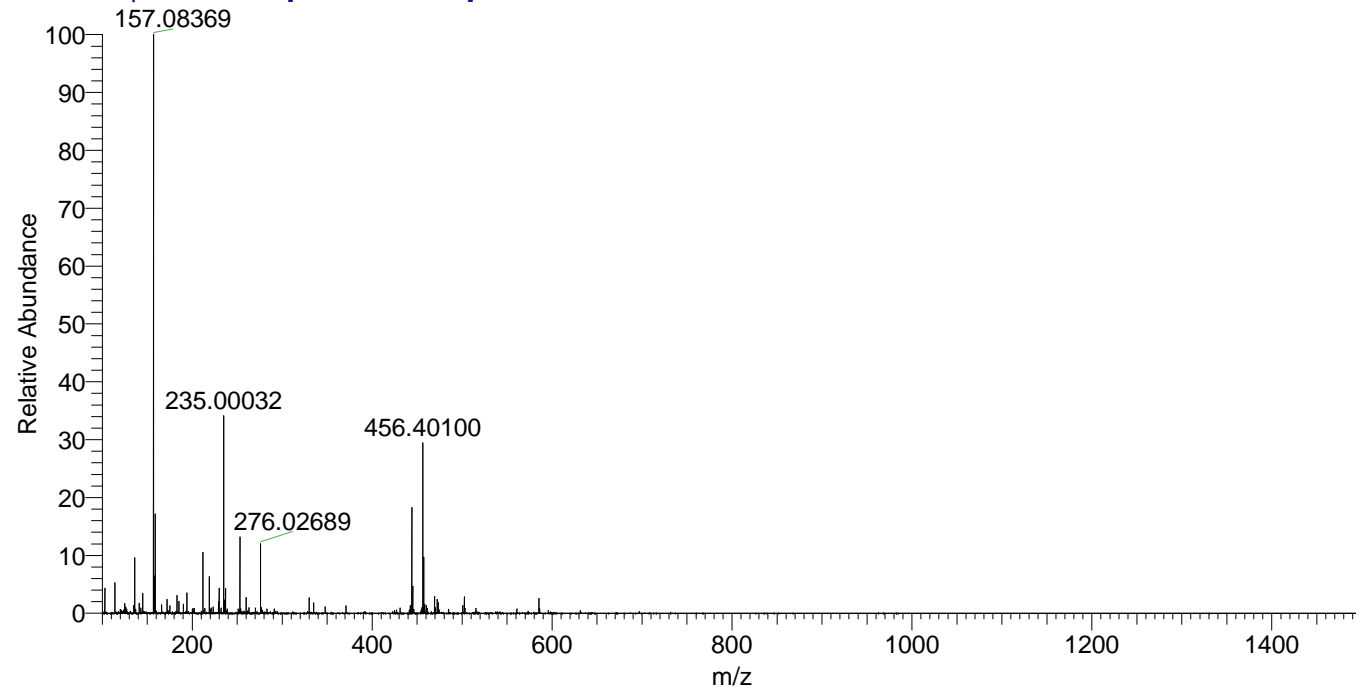
NL: 5.57E6  
 Base Peak m/z=  
 444.34851-444.35295 F:  
 FTMS + p ESI Full ms  
 [100.00-1500.00] MS  
 Pluctuosa\_HDX

NL: 3.72E5  
 Base Peak m/z=  
 223.18130-223.18354 F:  
 FTMS + p ESI Full ms  
 [100.00-1500.00] MS  
 Pluctuosa\_HDX

Pluctuosa\_HDX#1126 RT: 7.01  
 T: FTMS + p ESI Full ms [100.00-1500.00]  
 m/z = 444.00000-445.00000

m/z	Intensity	Relative	Delta (ppm)	Composition
444.35062	5572764.5	100.00	0.98	C <sub>21</sub> H <sub>26</sub> <sup>2</sup> H <sub>10</sub> O <sub>3</sub> N <sub>7</sub>
			-2.51	C <sub>21</sub> H <sub>28</sub> <sup>2</sup> H <sub>9</sub> O <sub>3</sub> N <sub>7</sub>
			4.46	C <sub>21</sub> H <sub>24</sub> <sup>2</sup> H <sub>11</sub> O <sub>3</sub> N <sub>7</sub>

Pluctuosa\_HDX #1126 RT: 7.01 AV: 1 NL: 2.94E7  
 T: FTMS + p ESI Full ms [100.00-1500.00]



Pluctuosa\_HDX #1126 RT: 7.01 AV: 1 NL: 5.38E6  
 T: FTMS + p ESI Full ms [100.00-1500.00]

