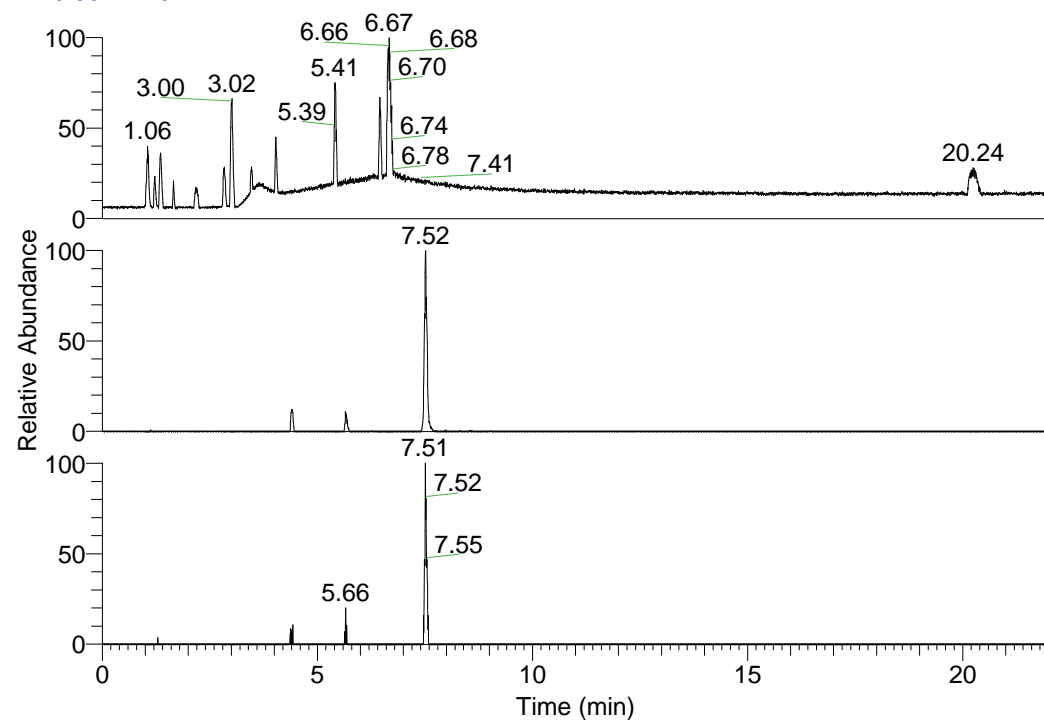


RT: 0.00 - 22.01



NL: 1.25E8  
 Base Peak m/z=  
 100.00000-1500.00000 F:  
 FTMS + p ESI Full ms  
 [100.00-1500.00] MS  
 Pluctuosa\_HDX

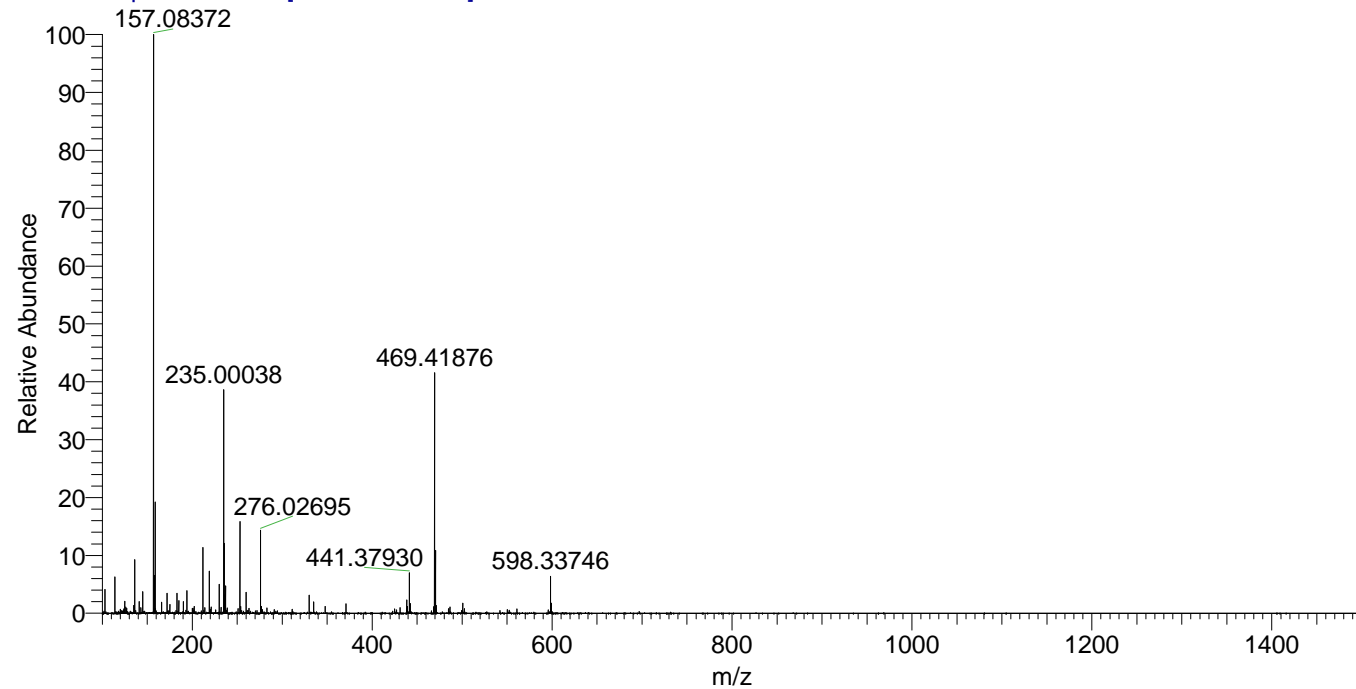
NL: 1.79E6  
 Base Peak m/z=  
 441.37711-441.38153 F:  
 FTMS + p ESI Full ms  
 [100.00-1500.00] MS  
 Pluctuosa\_HDX

NL: 6.10E4  
 Base Peak m/z=  
 221.69560-221.69782 F:  
 FTMS + p ESI Full ms  
 [100.00-1500.00] MS  
 Pluctuosa\_HDX

Pluctuosa\_HDX#1210 RT: 7.52  
 T: FTMS + p ESI Full ms [100.00-1500.00]  
 m/z= 441.00000-442.00000

m/z	Intensity	Relative	Delta (ppm)	Composition
441.37930	1793918.5	100.00	1.22	C <sub>23</sub> H <sub>33</sub> <sup>2</sup> H <sub>8</sub> O <sub>2</sub> N <sub>6</sub>
			-2.29	C <sub>23</sub> H <sub>35</sub> <sup>2</sup> H <sub>7</sub> O <sub>2</sub> N <sub>6</sub>
			4.73	C <sub>23</sub> H <sub>31</sub> <sup>2</sup> H <sub>9</sub> O <sub>2</sub> N <sub>6</sub>

Pluctuosa\_HDX #1210 RT: 7.52 AV: 1 NL: 2.56E7  
 T: FTMS + p ESI Full ms [100.00-1500.00]



Pluctuosa\_HDX #1210 RT: 7.52 AV: 1 NL: 1.79E6  
 T: FTMS + p ESI Full ms [100.00-1500.00]

