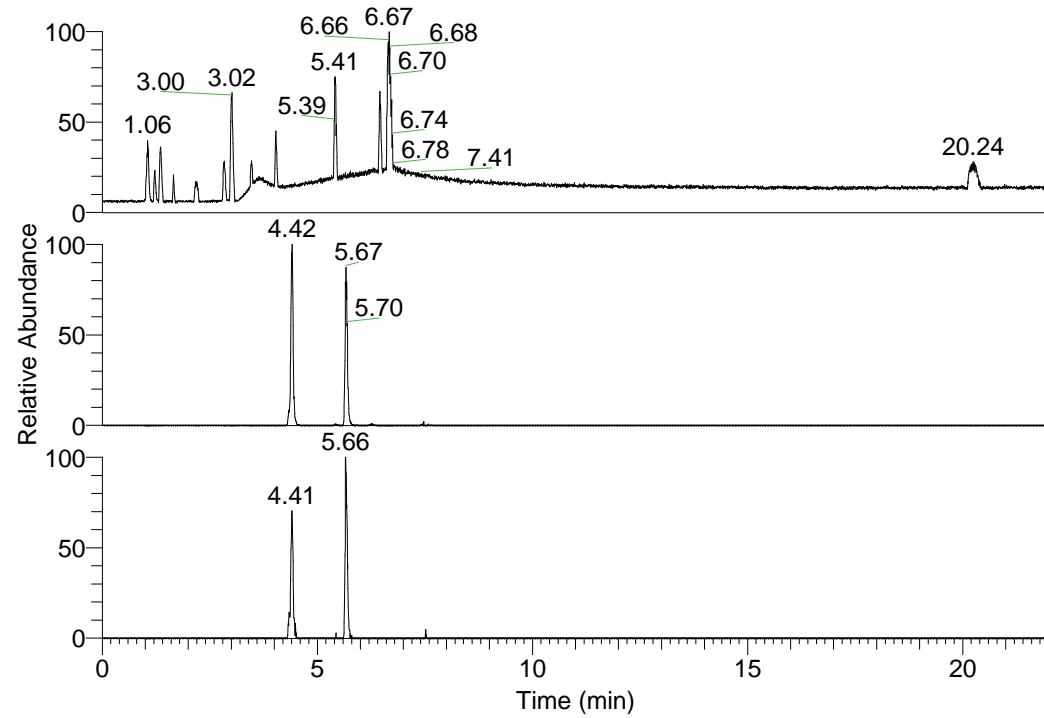


RT: 0.00 - 22.01



NL: 1.25E8  
 Base Peak m/z=  
 100.00000-1500.00000 F:  
 FTMS + p ESI Full ms  
 [100.00-1500.00] MS  
 Pluctuosa\_HDX

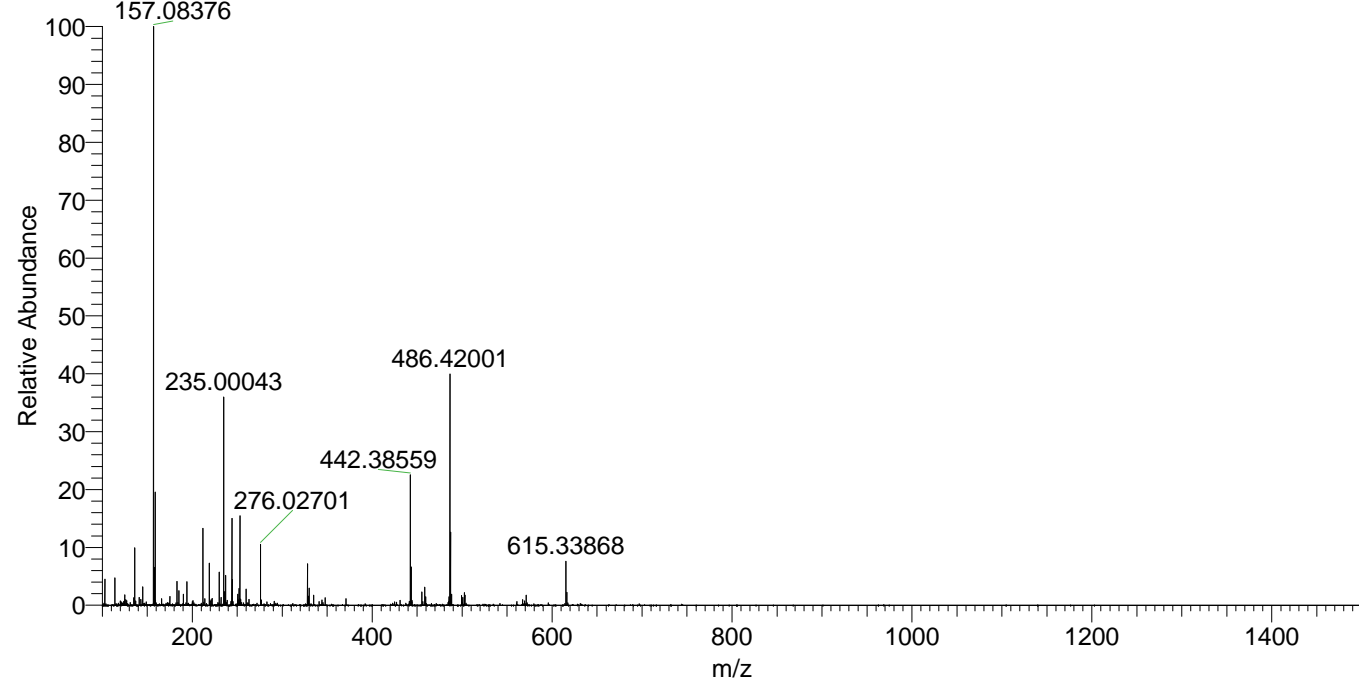
NL: 6.85E6  
 Base Peak m/z=  
 442.38338-442.38780 F:  
 FTMS + p ESI Full ms  
 [100.00-1500.00] MS  
 Pluctuosa\_HDX

NL: 3.08E5  
 Base Peak m/z=  
 222.19874-222.20096 F:  
 FTMS + p ESI Full ms  
 [100.00-1500.00] MS  
 Pluctuosa\_HDX

Pluctuosa\_HDX#899 RT: 5.67  
 T: FTMS + p ESI Full ms [100.00-1500.00]  
 m/z = 442.00000-443.00000

m/z	Intensity	Relative	Delta (ppm)	Composition
442.38559	5310506.0	100.00	1.24	C <sub>23</sub> H <sub>32</sub> <sup>2</sup> H <sub>9</sub> O <sub>2</sub> N <sub>6</sub>
			-2.26	C <sub>23</sub> H <sub>34</sub> <sup>2</sup> H <sub>8</sub> O <sub>2</sub> N <sub>6</sub>
			4.74	C <sub>23</sub> H <sub>30</sub> <sup>2</sup> H <sub>10</sub> O <sub>2</sub> N <sub>6</sub>

Pluctuosa\_HDX #899 RT: 5.67 AV: 1 NL: 2.33E7  
 T: FTMS + p ESI Full ms [100.00-1500.00]



Pluctuosa\_HDX #899 RT: 5.67 AV: 1 NL: 5.25E6  
 T: FTMS + p ESI Full ms [100.00-1500.00]

