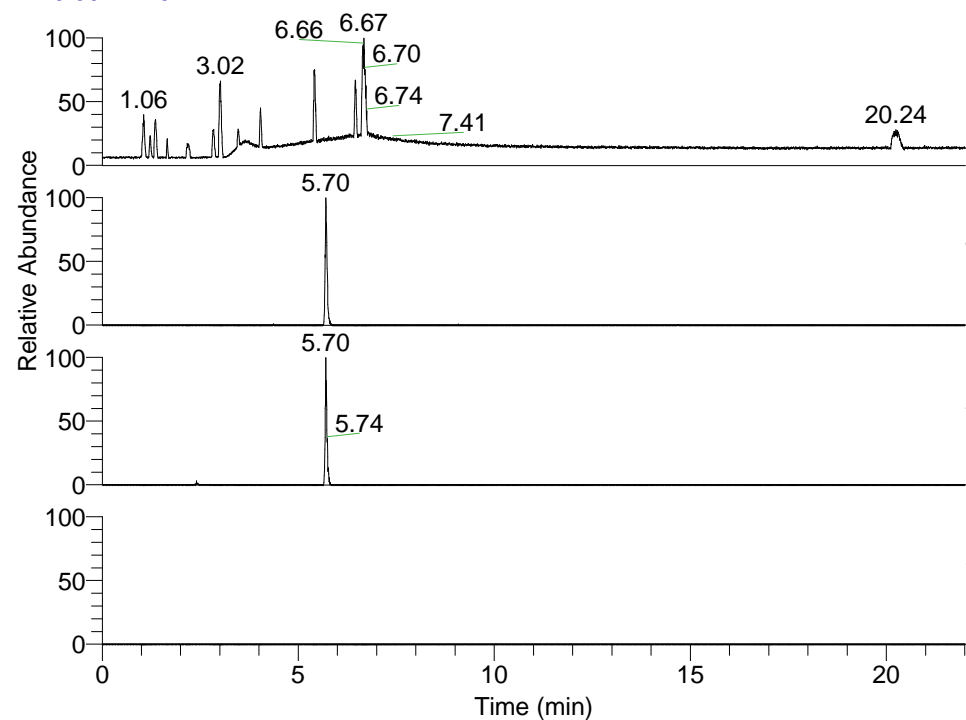


RT: 0.00 - 22.01



NL: 1.25E8
 Base Peak m/z=
 100.00000-1500.00000 F: FTMS + p
 ESI Full ms [100.00-1500.00] MS
 Pluctuosa_HDX

NL: 4.69E5
 Base Peak m/z=
 437.36305-437.36743 F: FTMS + p
 ESI Full ms [100.00-1500.00] MS
 Pluctuosa_HDX

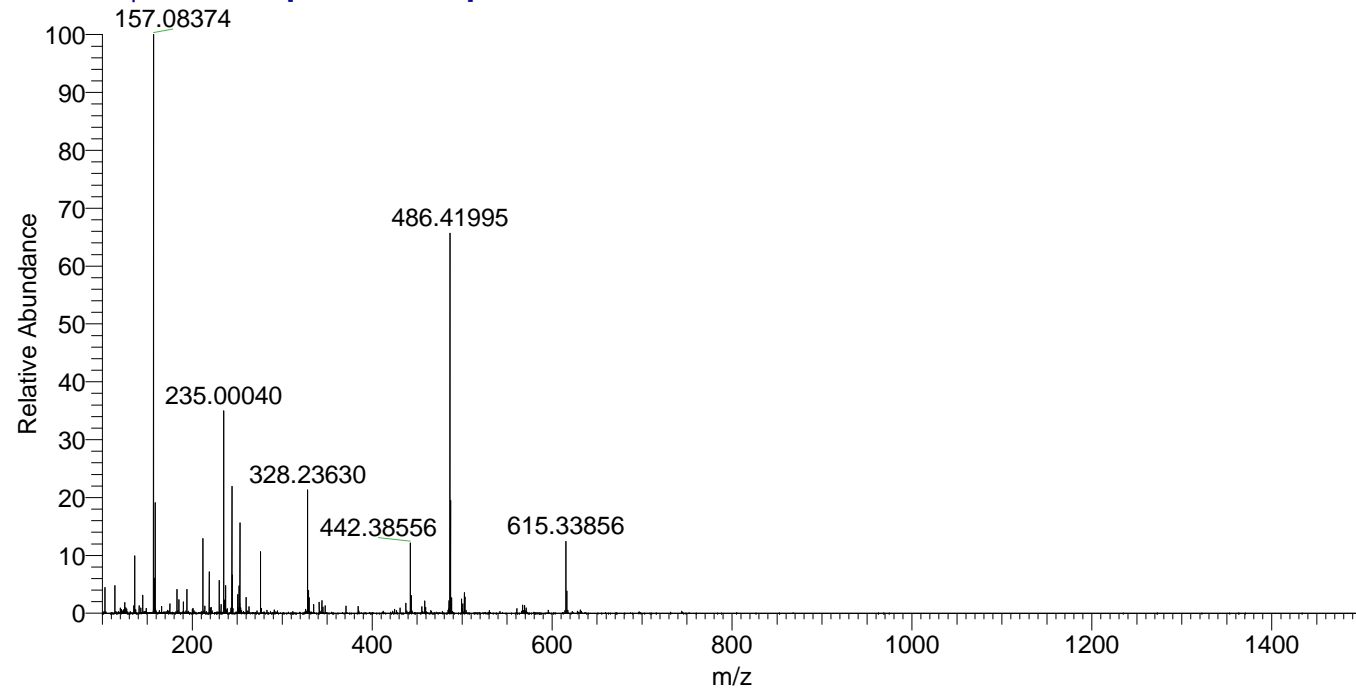
NL: 2.61E5
 Base Peak m/z=
 219.68857-219.69077 F: FTMS + p
 ESI Full ms [100.00-1500.00] MS
 Pluctuosa_HDX

NL: 0
 Base Peak m/z=
 552.36162-552.36714 F: FTMS + p
 ESI Full ms [100.00-1500.00] MS
 Pluctuosa_HDX

Pluctuosa_HDX#904 RT: 5.70
 T: FTMS + p ESI Full ms [100.00-1500.00]
 m/z= 437.00000-438.00000

m/z	Intensity	Relative	Delta (ppm)	Composition
437.36526	469191.9	100.00	1.32	C ₂₄ H ₃₇ ² H ₅ O ₂ N ₅
			-2.22	C ₂₄ H ₃₉ ² H ₄ O ₂ N ₅
			4.86	C ₂₄ H ₃₅ ² H ₆ O ₂ N ₅

Pluctuosa_HDX #904 RT: 5.70 AV: 1 NL: 2.65E7
 T: FTMS + p ESI Full ms [100.00-1500.00]



Pluctuosa_HDX #904 RT: 5.70 AV: 1 NL: 3.22E6
 T: FTMS + p ESI Full ms [100.00-1500.00]

