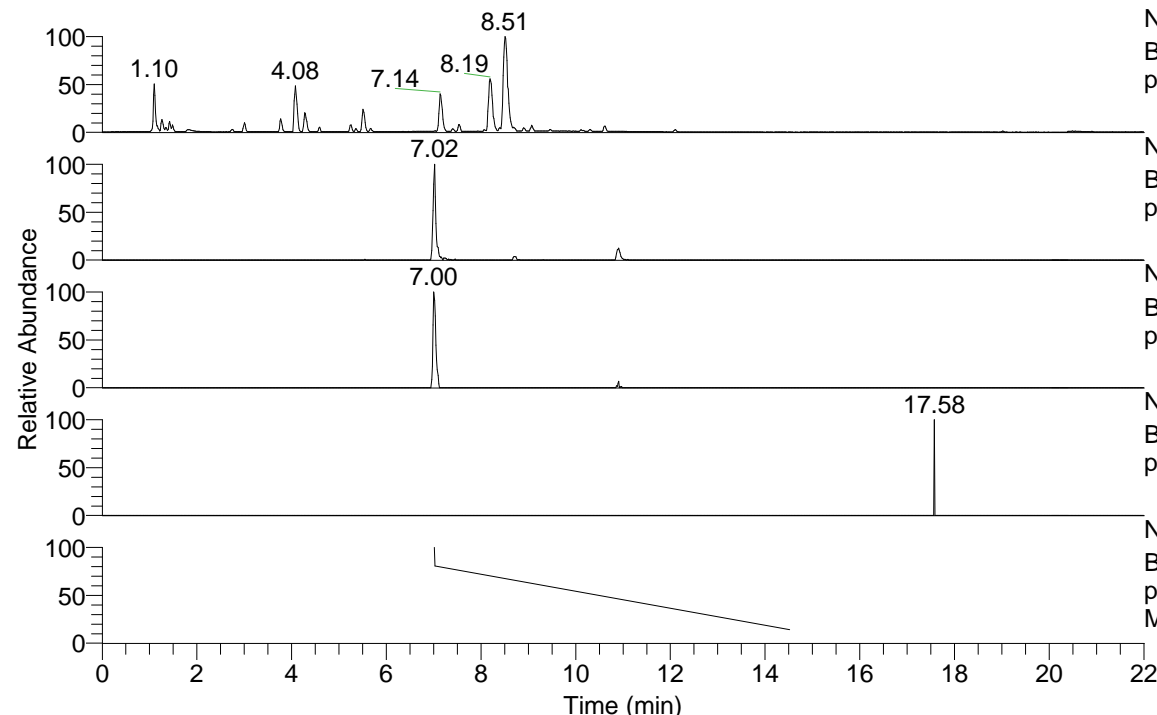


RT: 0.00 - 22.01



NL: 7.88E7  
 Base Peak m/z= 100.00000-1500.00000 F: FTMS + p ESI Full ms [100.00-1500.00] MS Pbirulai

NL: 3.05E5  
 Base Peak m/z= 432.33169-432.33601 F: FTMS + p ESI Full ms [100.00-1500.00] MS Pbirulai

NL: 9.56E4  
 Base Peak m/z= 216.66976-216.67192 F: FTMS + p ESI Full ms [100.00-1500.00] MS Pbirulai

NL: 1.26E3  
 Base Peak m/z= 546.32398-546.32944 F: FTMS + p ESI Full ms [100.00-1500.00] MS Pbirulai

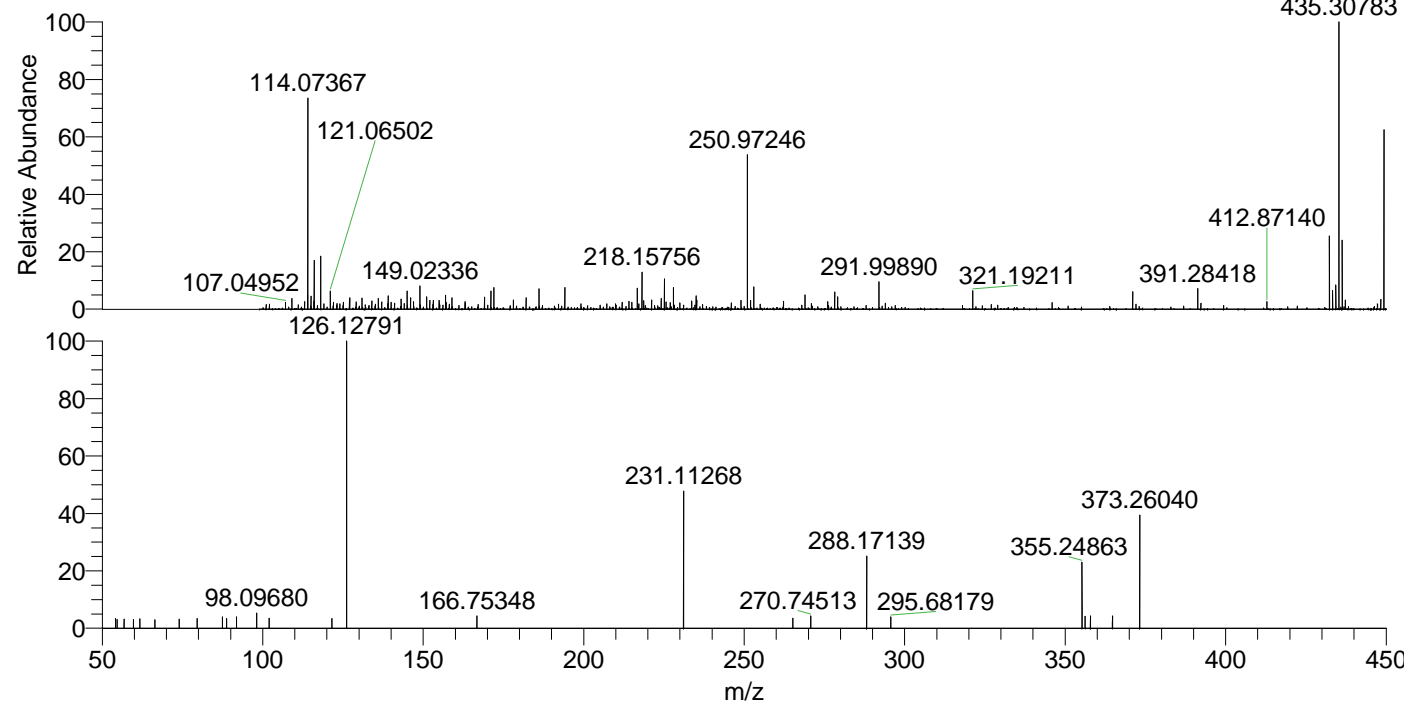
NL: 6.28E4  
 Base Peak m/z= 50.00000-1500.00000 F: FTMS + p ESI d Full ms2 432.28@hcd35.00 [50.00-460.00] MS Pbirulai

Pbirulai#2802-2808 RT: 7.01-7.03 AV: 2

F: FTMS + p ESI d Full ms2 432.28 ...

m/z = 50.00000-1000.00000

m/z	Intensity	Relative
54.10509	1499.7	2.77
54.15577	1831.9	3.39
54.61141	1685.7	3.12
56.78365	1744.8	3.22
59.73827	1650.3	3.05
61.75033	1792.9	3.31
66.39583	1636.0	3.02
74.01071	1716.1	3.17
79.60280	1859.9	3.44
87.42481	2165.6	4.00
88.72288	1827.3	3.38
91.80329	2166.9	4.00
98.09680	2923.6	5.40
102.00382	1931.5	3.57
121.53421	1840.5	3.40
126.12791	54112.2	100.00
166.75348	2313.4	4.28
231.11268	25972.2	48.00
265.13975	1889.2	3.49
270.74513	2323.9	4.29
288.17139	13703.1	25.32
295.68179	2121.1	3.92
355.24863	13080.4	24.17
356.23587	2289.4	4.23
357.87598	2317.6	4.28
364.74509	2325.6	4.30
373.26040	21758.2	40.21
452.99751	2321.7	4.29



NL: 1.17E6  
 Pbirulai#2803 RT: 7.02  
 AV: 1 T: FTMS + p ESI  
 Full lock ms  
 [100.00-1500.00]

NL: 5.40E4  
 Pbirulai#2749-2893 RT:  
 7.01-7.03 AV: 2 F: FTMS  
 + p ESI d Full ms2  
 432.28@hcd35.00  
 [50.00-460.00]