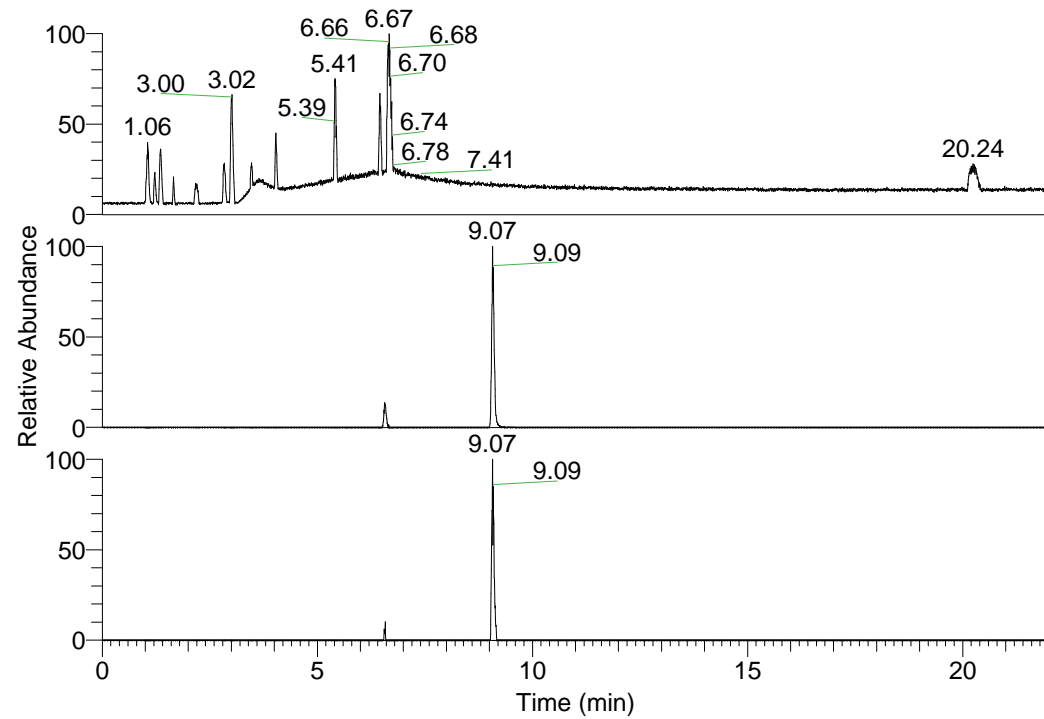


RT: 0.00 - 22.01



NL: 1.25E8
 Base Peak m/z=
 100.00000-1500.00000 F:
 FTMS + p ESI Full ms
 [100.00-1500.00] MS
 Pluctuosa_HDX

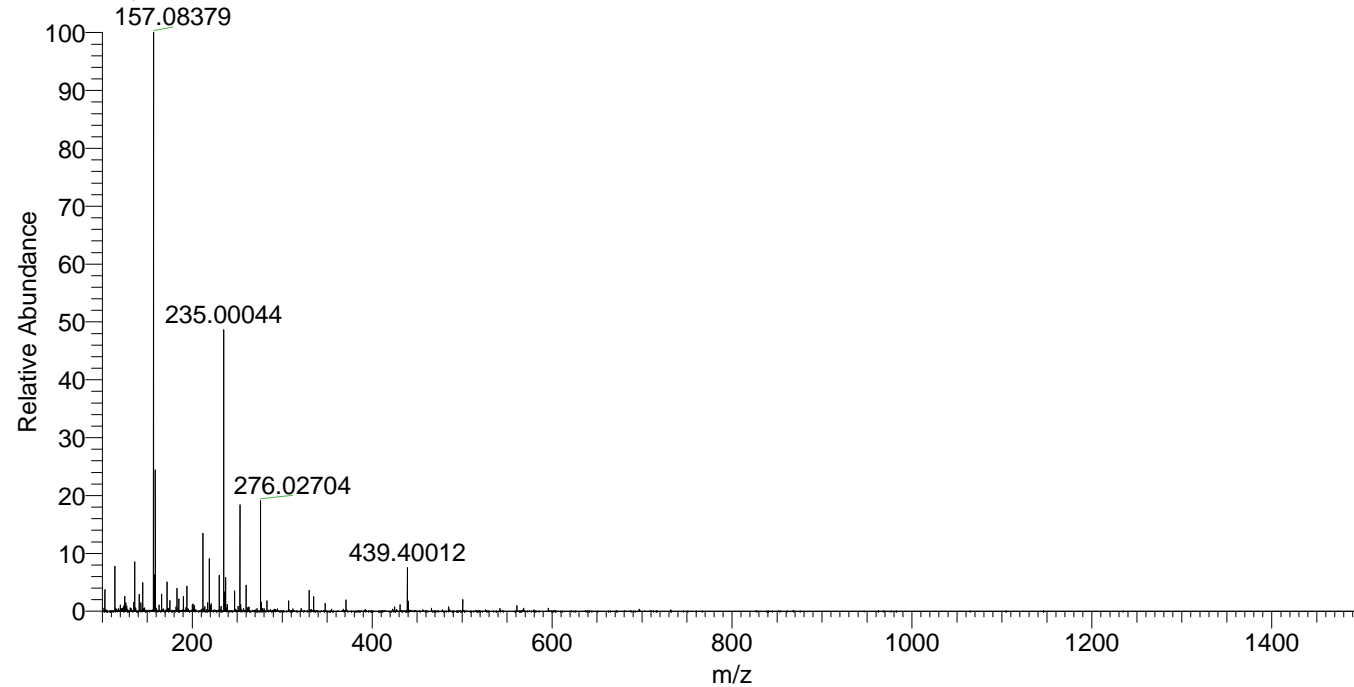
NL: 1.79E6
 Base Peak m/z=
 439.39785-439.40225 F:
 FTMS + p ESI Full ms
 [100.00-1500.00] MS
 Pluctuosa_HDX

NL: 1.16E5
 Base Peak m/z=
 220.70598-220.70818 F:
 FTMS + p ESI Full ms
 [100.00-1500.00] MS
 Pluctuosa_HDX

Pluctuosa_HDX#1464 RT: 9.07
 T: FTMS + p ESI Full ms [100.00-1500.00]
 m/z= 439.00000-440.00000

m/z	Intensity	Relative	Delta (ppm)	Composition
439.40012	1463207.6	100.00	1.40	C ₂₄ H ₃₅ ² H ₈ ON ₆
			-2.12	C ₂₄ H ₃₇ ² H ₇ ON ₆
			4.92	C ₂₄ H ₃₃ ² H ₉ ON ₆

Pluctuosa_HDX #1464 RT: 9.07 AV: 1 NL: 1.94E7
 T: FTMS + p ESI Full ms [100.00-1500.00]



Pluctuosa_HDX #1464 RT: 9.07 AV: 1 NL: 1.46E6
 T: FTMS + p ESI Full ms [100.00-1500.00]

