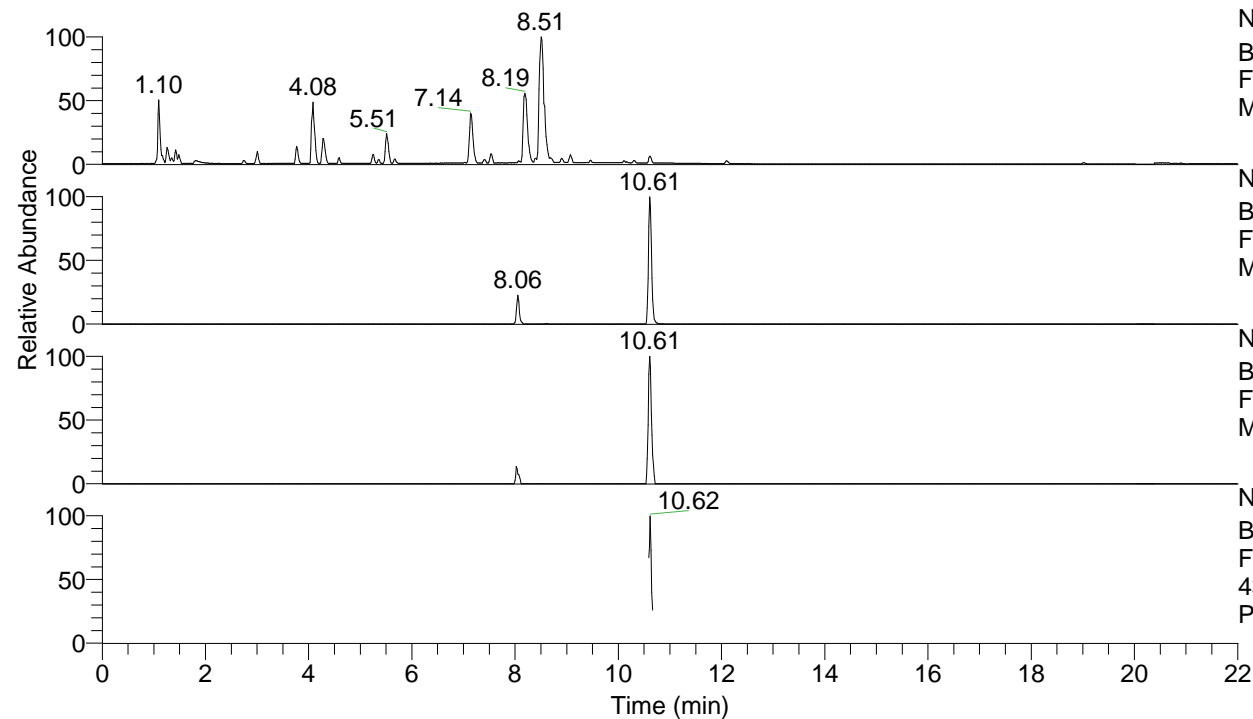


RT: 0.00 - 22.01



NL: 7.88E7  
 Base Peak m/z= 100.00000-1500.00000 F:  
 FTMS + p ESI Full ms [100.00-1500.00]  
 MS Pbirulai

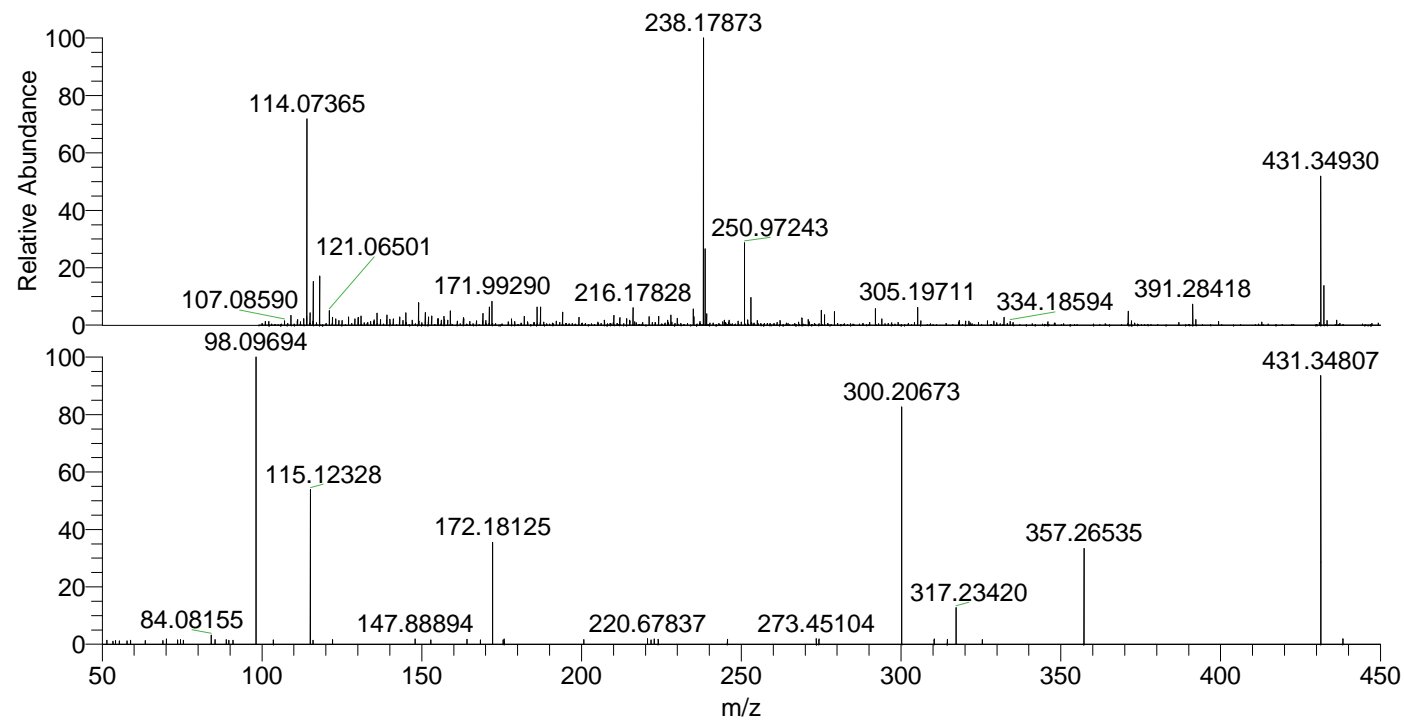
NL: 6.57E5  
 Base Peak m/z= 431.34768-431.35200 F:  
 FTMS + p ESI Full ms [100.00-1500.00]  
 MS Pbirulai

NL: 7.57E4  
 Base Peak m/z= 216.17775-216.17991 F:  
 FTMS + p ESI Full ms [100.00-1500.00]  
 MS Pbirulai

NL: 7.21E4  
 Base Peak m/z= 50.00000-1500.00000 F:  
 FTMS + p ESI d Full ms2  
 431.35@hcd35.00 [50.00-460.00] MS  
 Pbirulai

Pbirulai#4236-4259 RT: 10.59-10.65  
 F: FTMS + p ESI d Full ms2 431.35 ...  
 m/z= 50.00000-1000.00000

m/z	Intensity	Relative
51.49472	686.4	1.43
53.39966	512.4	1.07
54.14621	616.0	1.28
55.31237	591.8	1.23
57.80524	593.3	1.23
58.84076	650.8	1.35
63.46687	659.9	1.37
68.93953	640.1	1.33
70.06606	893.1	1.86
73.56047	711.2	1.48
74.47860	767.7	1.60
75.36096	657.9	1.37
84.08155	1520.0	3.16
85.35622	764.7	1.59
88.85534	815.5	1.70
89.63574	642.5	1.34
90.90482	692.1	1.44
98.09694	48064.6	100.00
103.58919	705.9	1.47
115.12328	26116.7	54.34
115.92860	695.4	1.45
122.11160	814.0	1.69
147.88894	878.4	1.83
152.81409	731.9	1.52
164.16418	823.3	1.71
168.38009	744.5	1.55
172.18125	17394.1	36.19
175.48901	742.0	1.54
175.81565	899.8	1.87
200.68460	774.8	1.61
220.67837	929.8	1.93
221.72361	758.3	1.58
222.75241	902.1	1.88
224.00317	806.1	1.68
245.65147	858.9	1.79
273.45104	964.5	2.01
273.47863	880.4	1.83
274.29842	934.4	1.94
300.20673	40244.7	83.73
310.36109	919.6	1.91
314.49021	851.6	1.77
317.23420	6128.4	12.75
325.43479	788.0	1.64
357.26535	16238.5	33.78
431.34807	46039.0	95.79
438.28079	902.1	1.88



NL: 1.23E6  
 Pbirulai#4243 RT: 10.61  
 AV: 1 T: FTMS + p ESI  
 Full lock ms  
 [100.00-1500.00]

NL: 4.80E4  
 Pbirulai#4213-4262 RT:  
 10.59-10.65 AV: 5 F:  
 FTMS + p ESI d Full ms2  
 431.35@hcd35.00  
 [50.00-460.00]