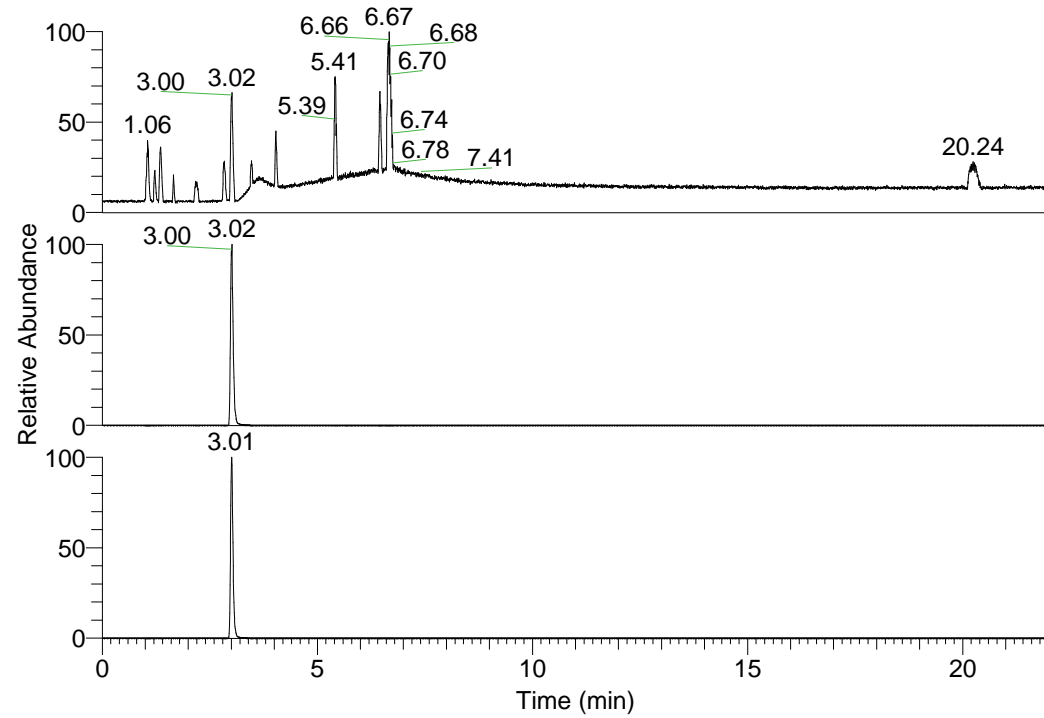


RT: 0.00 - 22.01



NL: 1.25E8
Base Peak m/z=
100.00000-1500.00000 F:
FTMS + p ESI Full ms
[100.00-1500.00] MS
Pluctuosa_HDX

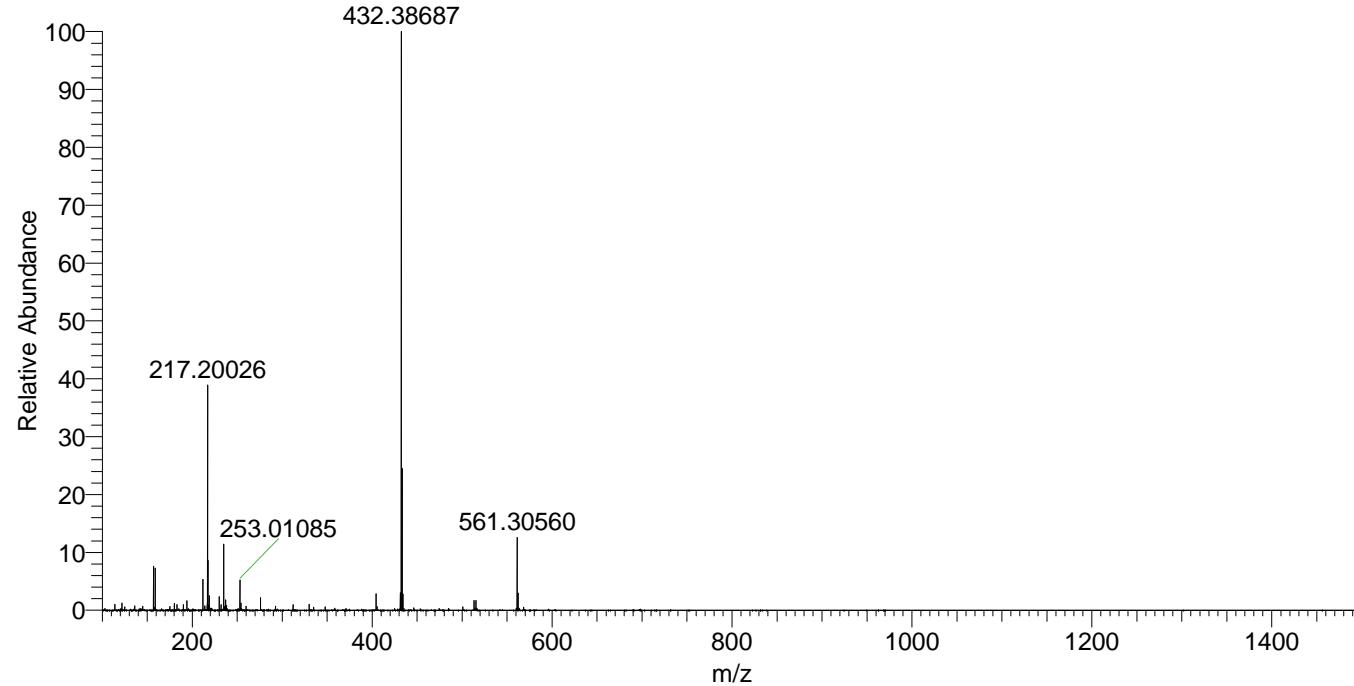
NL: 8.30E7
Base Peak m/z=
432.38496-432.38928 F:
FTMS + p ESI Full ms
[100.00-1500.00] MS
Pluctuosa_HDX

NL: 3.29E7
Base Peak m/z=
217.19952-217.20170 F:
FTMS + p ESI Full ms
[100.00-1500.00] MS
Pluctuosa_HDX

Pluctuosa_HDX#466 RT: 3.02
T: FTMS + p ESI Full ms [100.00-1500.00]
m/z = 432.00000-433.00000

m/z	Intensity	Relative	Delta (ppm)	Composition
432.38690	62504580.0	100.00	0.77	C ₂₁ H ₃₀ ² H ₁₀ O ₂ N ₇
			-2.81	C ₂₁ H ₃₂ ² H ₉ O ₂ N ₇
			4.35	C ₂₁ H ₂₈ ² H ₁₁ O ₂ N ₇

Pluctuosa_HDX #465 RT: 3.02 AV: 1 NL: 7.82E7
T: FTMS + p ESI Full ms [100.00-1500.00]



Pluctuosa_HDX #466 RT: 3.02 AV: 1 NL: 5.90E7
T: FTMS + p ESI Full ms [100.00-1500.00]

