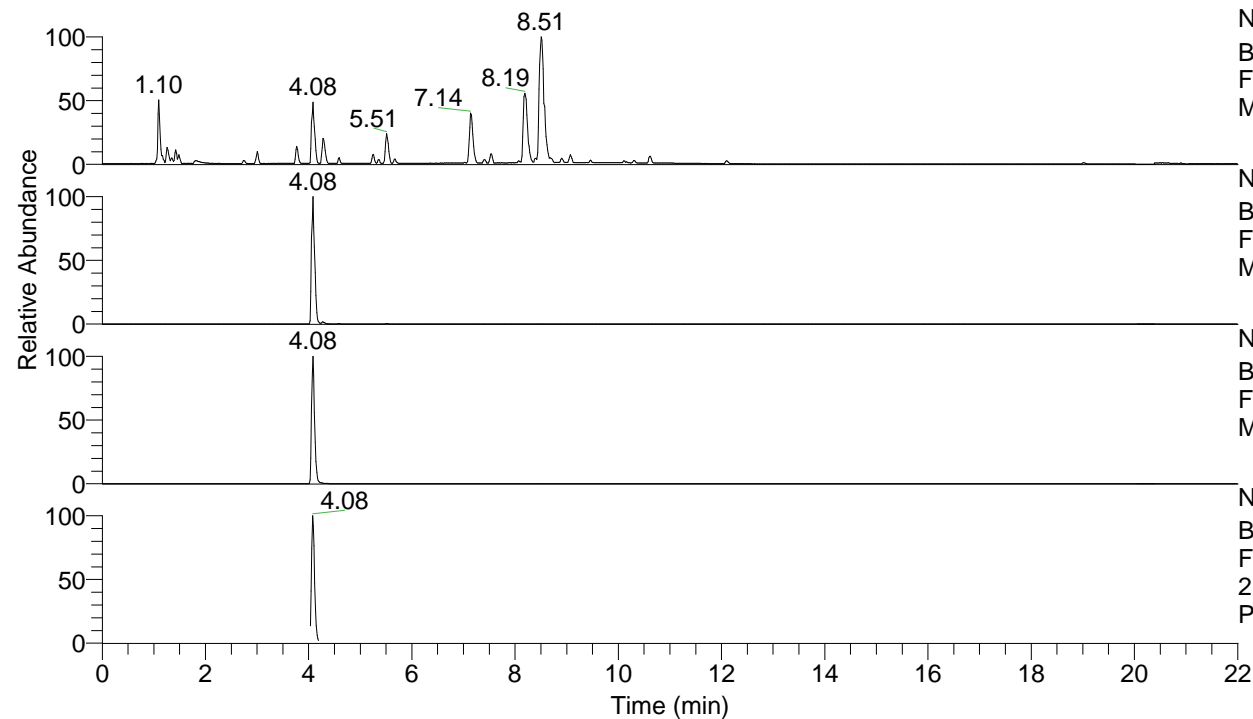


RT: 0.00 - 22.01



NL: 7.88E7
 Base Peak m/z= 100.00000-1500.00000 F:
 FTMS + p ESI Full ms [100.00-1500.00]
 MS Pbirulai

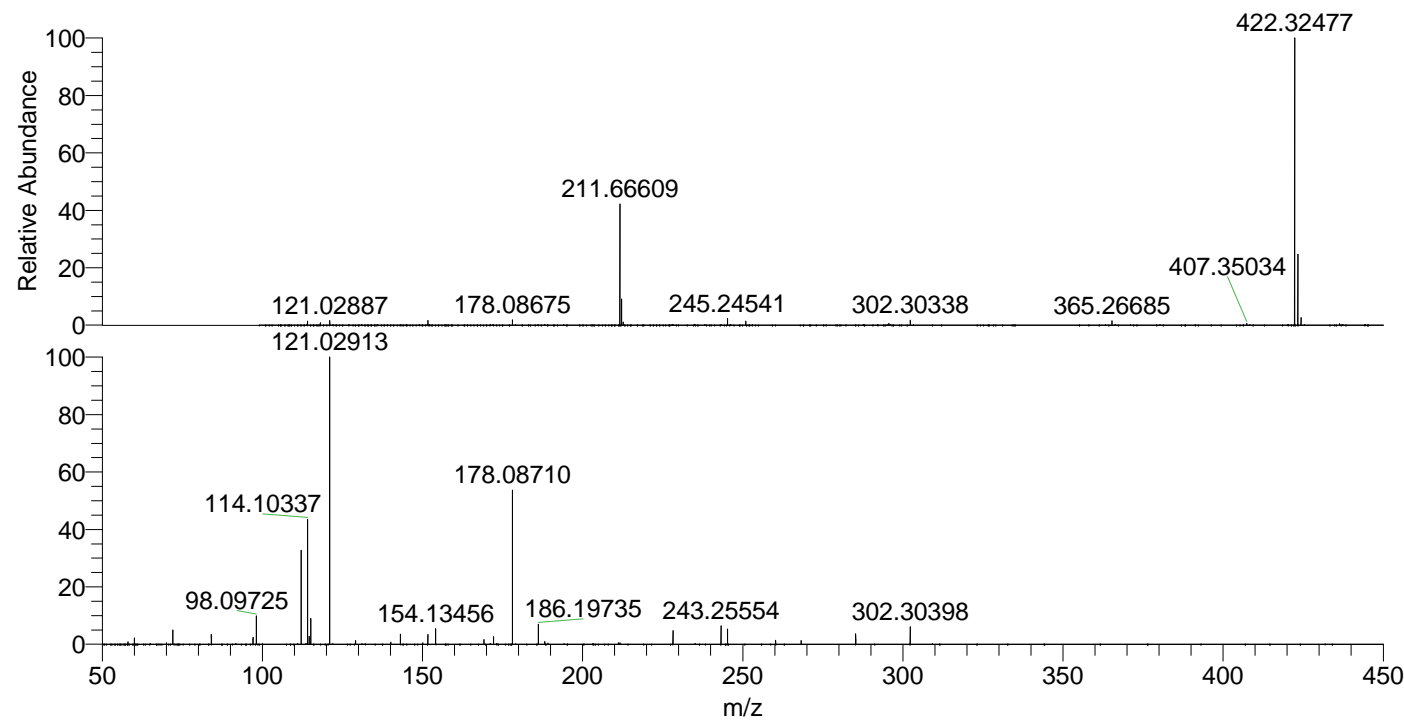
NL: 3.84E7
 Base Peak m/z= 422.32224-422.32646 F:
 FTMS + p ESI Full ms [100.00-1500.00]
 MS Pbirulai

NL: 1.58E7
 Base Peak m/z= 211.66503-211.66715 F:
 FTMS + p ESI Full ms [100.00-1500.00]
 MS Pbirulai

NL: 3.41E6
 Base Peak m/z= 50.00000-1500.00000 F:
 FTMS + p ESI d Full ms2
 211.67@hcd35.00 [50.00-450.00] MS
 Pbirulai

Pbirulai#1613-1677 RT: 4.04-4.19 AV: 12
 F: FTMS + p ESI d Full ms2 211.67@h ...
 m/z= 50.00000-1000.00000

m/z	Intensity	Relative
58.06619	12380.8	0.89
60.05670	30603.1	2.21
72.08176	68738.1	4.96
84.08174	46798.9	3.38
97.07682	34295.5	2.47
98.09725	138230.2	9.97
112.11283	465747.8	33.60
114.10337	609048.3	43.93
114.61360	39314.3	2.84
115.12372	127446.3	9.19
121.02913	1386330.5	100.00
129.13928	17408.4	1.26
140.11883	9373.1	0.68
143.14232	48020.8	3.46
150.05573	7182.1	0.52
151.65566	48503.1	3.50
154.13456	77049.2	5.56
169.17077	23192.8	1.67
172.18162	37897.6	2.73
178.08710	755324.6	54.48
186.19735	99111.5	7.15
188.18790	12912.3	0.93
228.21920	66482.9	4.80
243.25554	88765.3	6.40
245.24592	75832.2	5.47
260.28202	19221.9	1.39
268.25040	18426.0	1.33
285.27740	49946.1	3.60
302.30398	84298.4	6.08



NL: 3.62E7
 Pbirulai#1633 RT: 4.08
 AV: 1 T: FTMS + p ESI
 Full ms [100.00-1500.00]

NL: 1.39E6
 Pbirulai#1588-1689 RT:
 4.04-4.19 AV: 12 F:
 FTMS + p ESI d Full ms2
 211.67@hcd35.00
 [50.00-450.00]