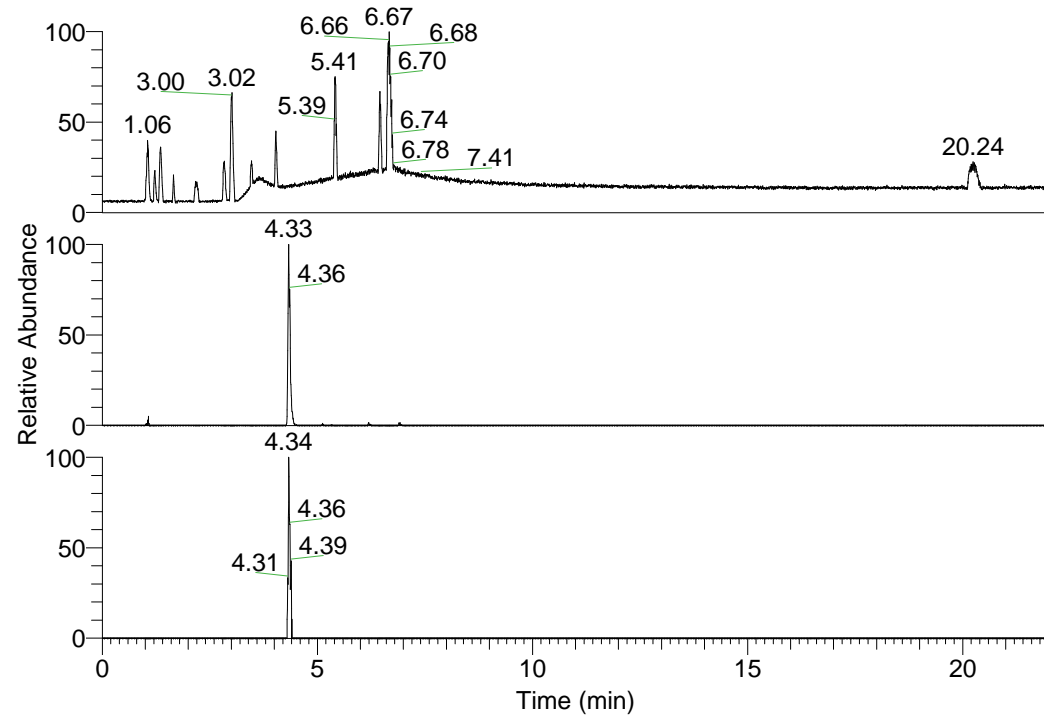


RT: 0.00 - 22.01



NL: 1.25E8
 Base Peak m/z=
 100.00000-1500.00000 F:
 FTMS + p ESI Full ms
 [100.00-1500.00] MS
 Pluctuosa_HDX

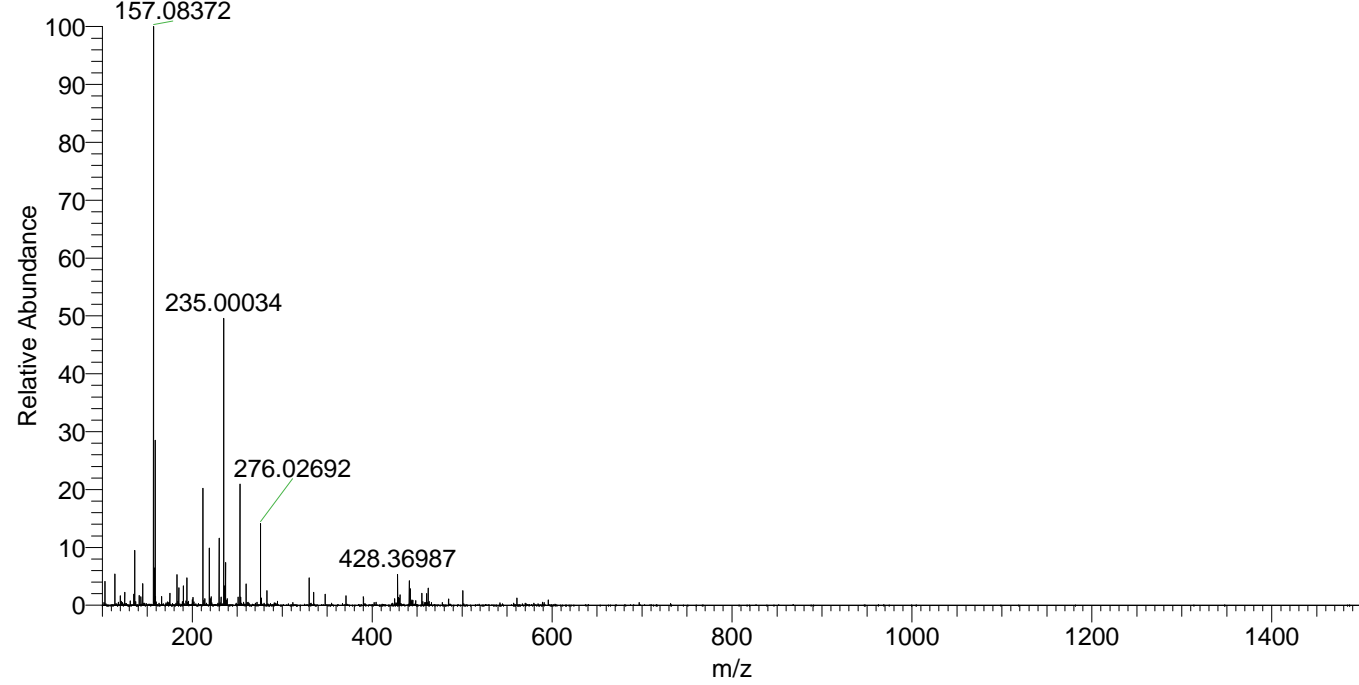
Pluctuosa_HDX#680 RT: 4.33
 T: FTMS + p ESI Full ms [100.00-1500.00]
 m/z= 428.00000-429.00000

| m/z | Intensity | Relative | Delta (ppm) | Composition |
|-----------|-----------|----------|-------------|--|
| 428.36987 | 1027808.4 | 100.00 | 1.12 | C ₂₂ H ₃₀ ² H ₉ O ₂ N ₆ |
| | | | -2.49 | C ₂₂ H ₃₂ ² H ₈ O ₂ N ₆ |
| | | | 4.74 | C ₂₂ H ₂₈ ² H ₁₀ O ₂ N ₆ |

NL: 1.03E6
 Base Peak m/z=
 428.36780-428.37208 F:
 FTMS + p ESI Full ms
 [100.00-1500.00] MS
 Pluctuosa_HDX

NL: 3.70E4
 Base Peak m/z=
 215.19094-215.19310 F:
 FTMS + p ESI Full ms
 [100.00-1500.00] MS
 Pluctuosa_HDX

Pluctuosa_HDX #680 RT: 4.33 AV: 1 NL: 1.83E7
 T: FTMS + p ESI Full ms [100.00-1500.00]



Pluctuosa_HDX #680 RT: 4.33 AV: 1 NL: 9.80E5
 T: FTMS + p ESI Full ms [100.00-1500.00]

