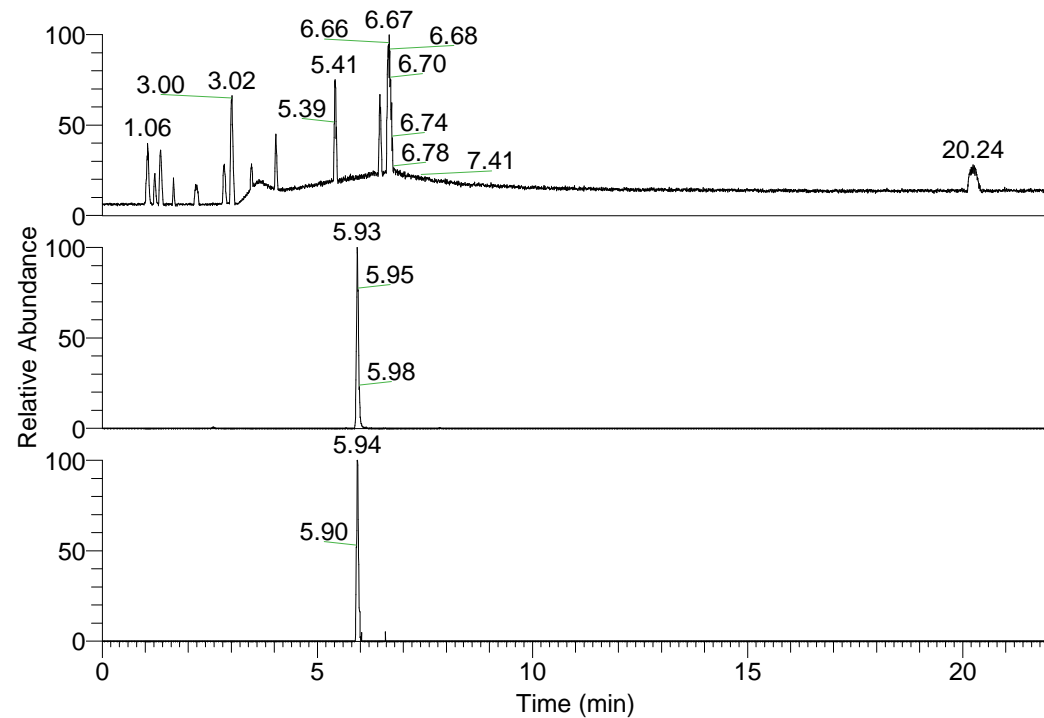


RT: 0.00 - 22.01



NL: 1.25E8
 Base Peak m/z=
 100.00000-1500.00000 F:
 FTMS + p ESI Full ms
 [100.00-1500.00] MS
 Pluctuosa_HDX

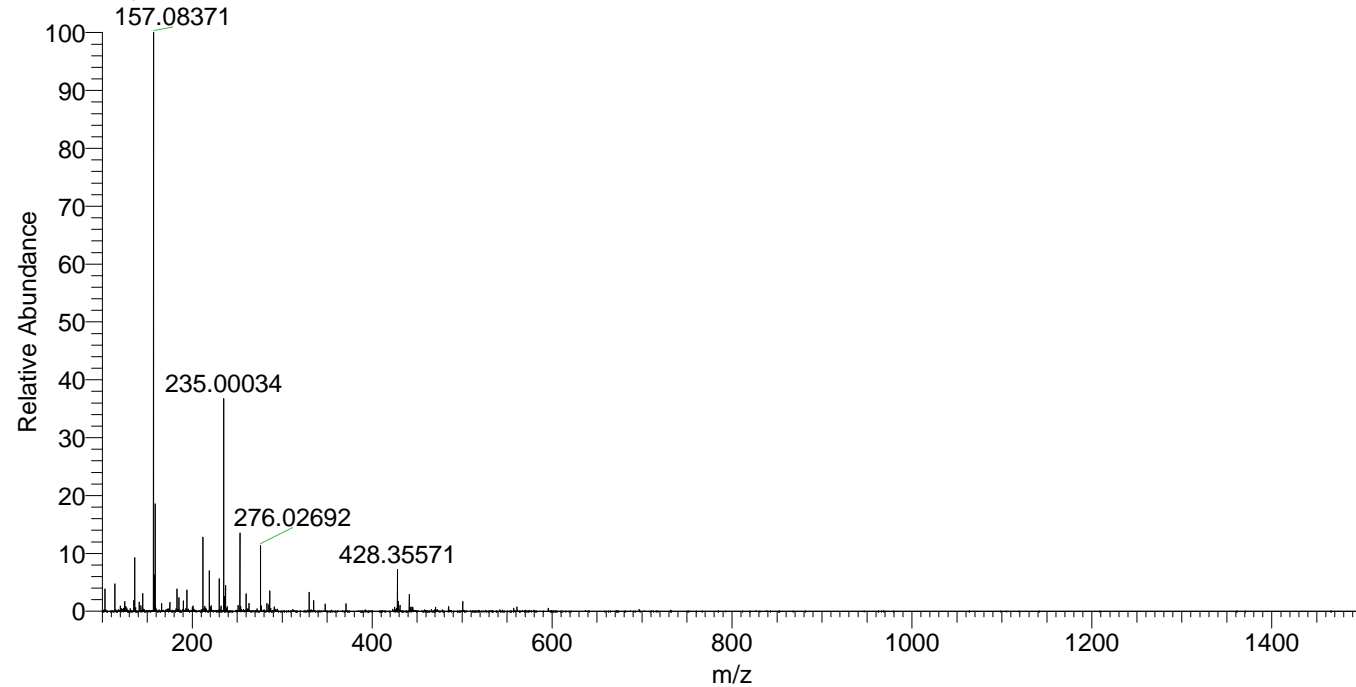
NL: 1.97E6
 Base Peak m/z=
 428.35368-428.35796 F:
 FTMS + p ESI Full ms
 [100.00-1500.00] MS
 Pluctuosa_HDX

NL: 1.38E5
 Base Peak m/z=
 215.18388-215.18604 F:
 FTMS + p ESI Full ms
 [100.00-1500.00] MS
 Pluctuosa_HDX

Pluctuosa_HDX#942 RT: 5.93
 T: FTMS + p ESI Full ms [100.00-1500.00]
 m/z = 428.00000-429.00000

m/z	Intensity	Relative	Delta (ppm)	Composition
428.35571	1971100.3	100.00	1.04	C ₂₁ H ₂₆ ² H ₁₀ O ₂ N ₇
			-2.57	C ₂₁ H ₂₈ ² H ₉ O ₂ N ₇
			4.65	C ₂₁ H ₂₄ ² H ₁₁ O ₂ N ₇

Pluctuosa_HDX #942 RT: 5.93 AV: 1 NL: 2.67E7
 T: FTMS + p ESI Full ms [100.00-1500.00]



Pluctuosa_HDX #942 RT: 5.93 AV: 1 NL: 1.93E6
 T: FTMS + p ESI Full ms [100.00-1500.00]

