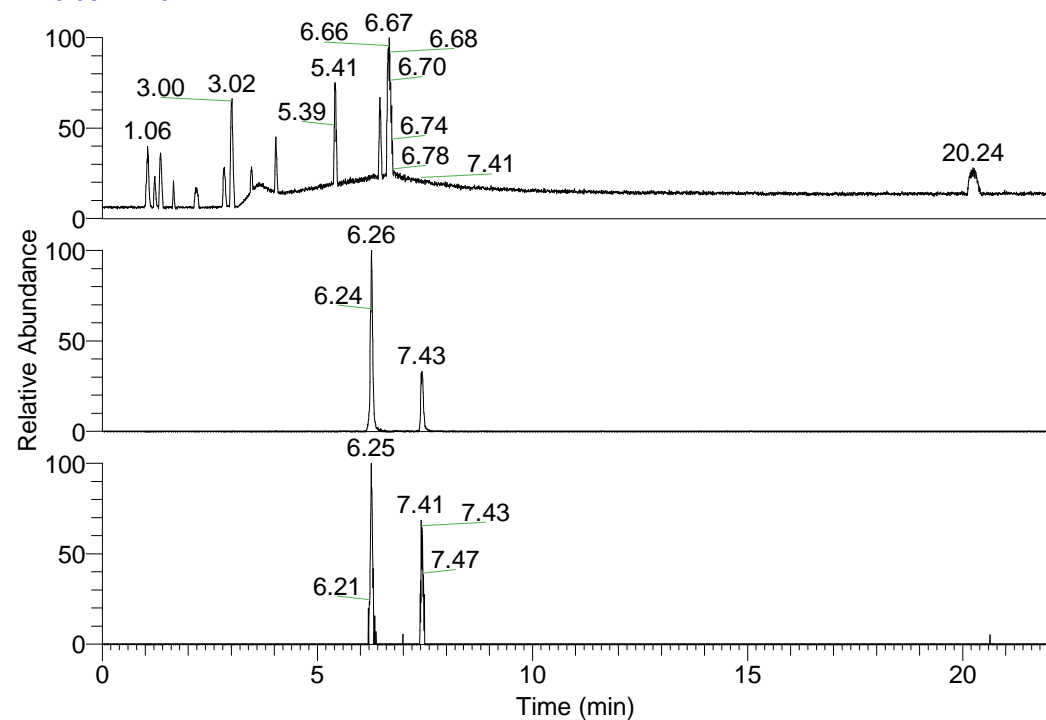


RT: 0.00 - 22.01



NL: 1.25E8
 Base Peak m/z=
 100.00000-1500.00000 F:
 FTMS + p ESI Full ms
 [100.00-1500.00] MS
 Pluctuosa_HDX

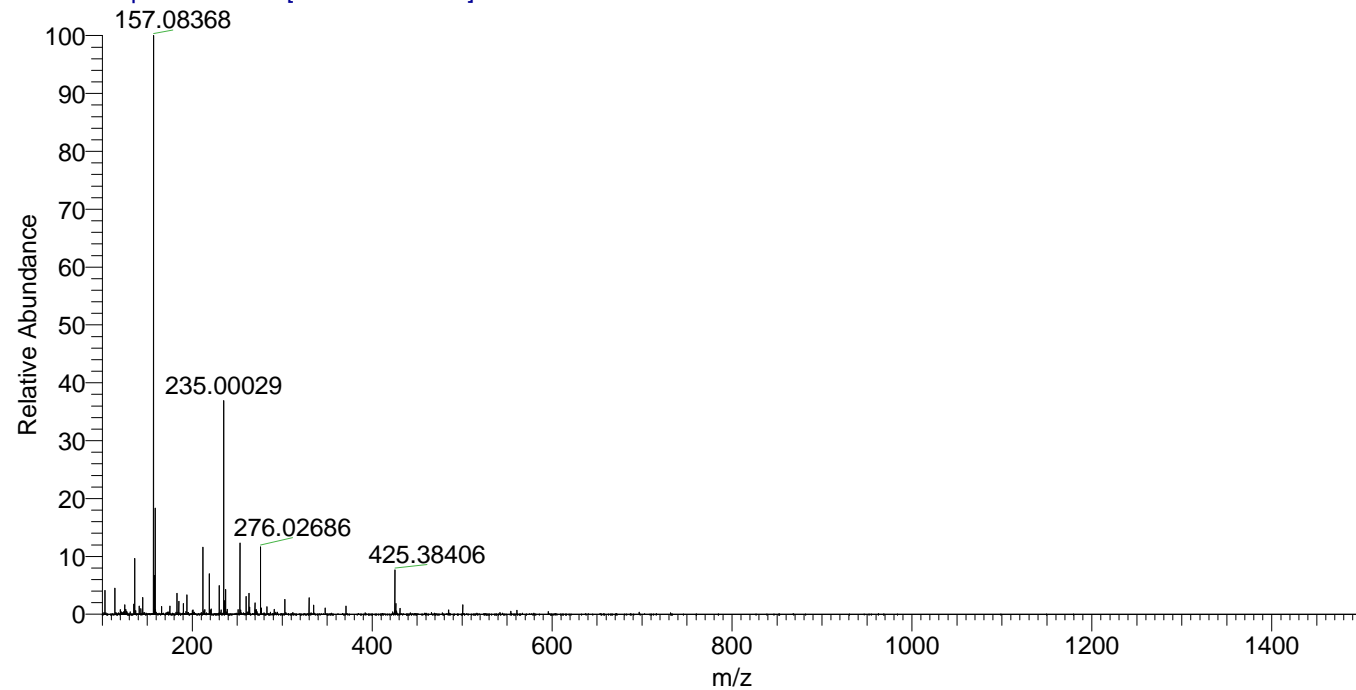
NL: 2.19E6
 Base Peak m/z=
 425.38227-425.38653 F:
 FTMS + p ESI Full ms
 [100.00-1500.00] MS
 Pluctuosa_HDX

NL: 6.86E4
 Base Peak m/z=
 213.69818-213.70032 F:
 FTMS + p ESI Full ms
 [100.00-1500.00] MS
 Pluctuosa_HDX

Pluctuosa_HDX#996 RT: 6.26
 T: FTMS + p ESI Full ms [100.00-1500.00]
 m/z= 425.00000-426.00000

m/z	Intensity	Relative	Delta (ppm)	Composition
425.38406	2189872.0	100.00	0.50	C ₂₃ H ₃₃ ² H ₈ ON ₆
			-3.14	C ₂₃ H ₃₅ ² H ₇ ON ₆
			4.14	C ₂₃ H ₃₁ ² H ₉ ON ₆

Pluctuosa_HDX #996 RT: 6.26 AV: 1 NL: 2.87E7
 T: FTMS + p ESI Full ms [100.00-1500.00]



Pluctuosa_HDX #996 RT: 6.26 AV: 1 NL: 2.19E6
 T: FTMS + p ESI Full ms [100.00-1500.00]

