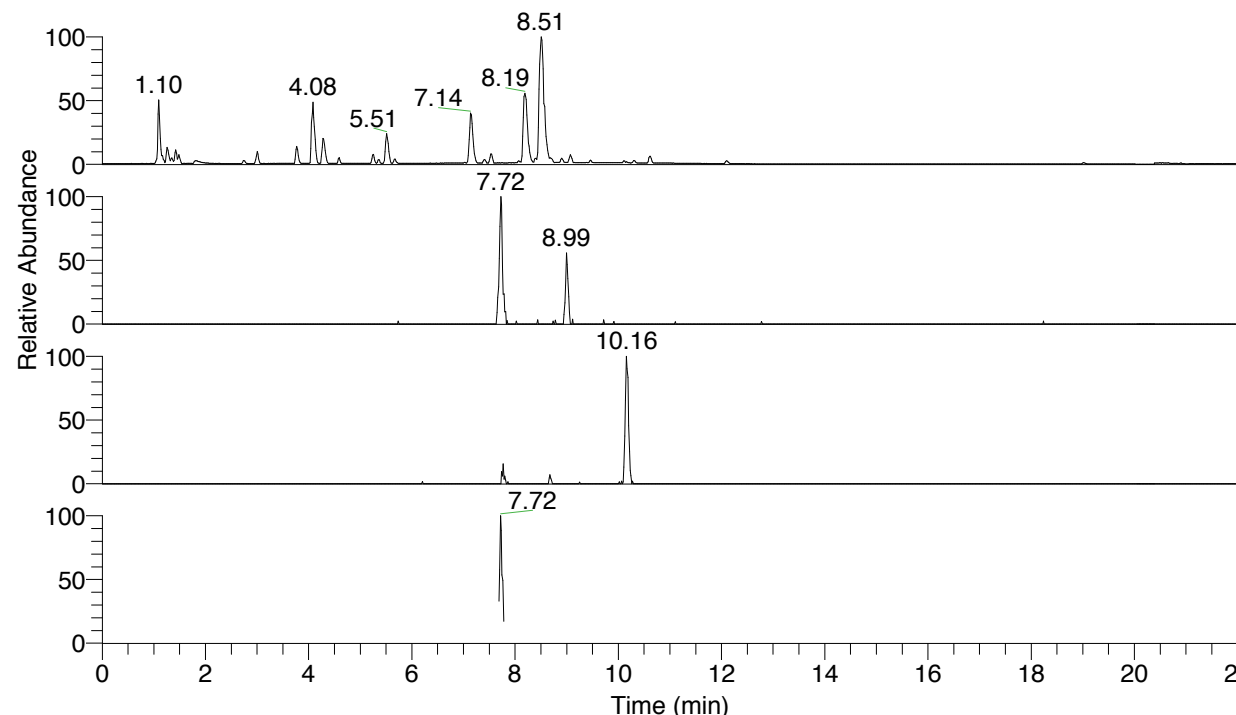


RT: 0.00 - 22.01



NL: 7.88E7  
 Base Peak m/z= 100.00000-1500.00000 F:  
 FTMS + p ESI Full ms [100.00-1500.00]  
 MS Pbirulai

NL: 5.15E4  
 Base Peak m/z= 209.16995-209.17205 F:  
 FTMS + p ESI Full ms [100.00-1500.00]  
 MS Pbirulai

NL: 6.47E4  
 Base Peak m/z= 203.64380-203.64584 F:  
 FTMS + p ESI Full ms [100.00-1500.00]  
 MS Pbirulai

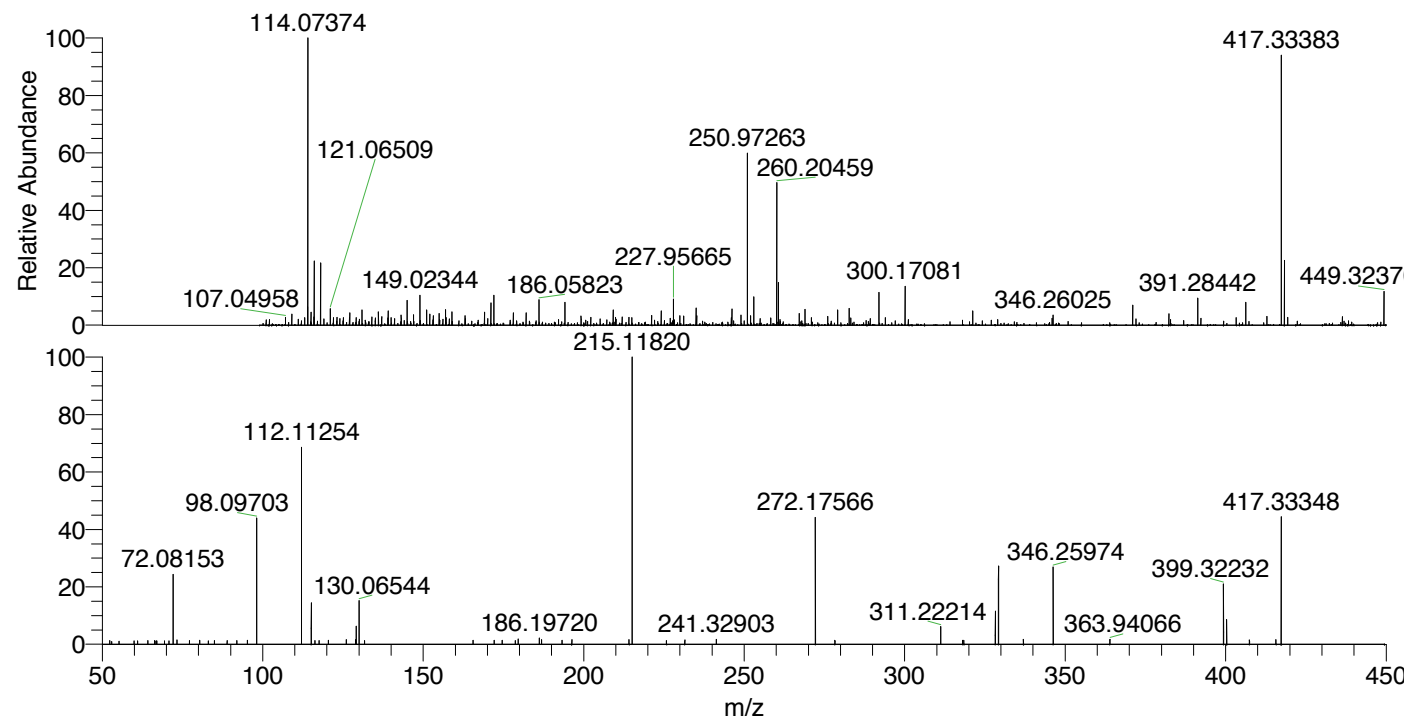
NL: 9.73E4  
 Base Peak m/z= 50.00000-1500.00000 F:  
 FTMS + p ESI d Full ms2  
 417.33@hcd35.00 [50.00-445.00] MS  
 Pbirulai

Pbirulai#3076-3093 RT: 7.70-7.75 AV: 4

F: FTMS + p ESI d Full ms2 417.33 ...

m/z= 50.00000-1000.00000

m/z	Intensity	Relative
52.35387	871.5	1.27
59.92139	777.8	1.14
61.03665	821.5	1.20
64.16458	882.7	1.29
66.26734	901.5	1.32
67.03477	821.4	1.20
70.81370	803.3	1.17
72.08153	16625.2	24.26
73.33055	1042.4	1.52
77.20322	858.2	1.25
80.39120	955.3	1.39
84.95530	856.7	1.25
88.89803	862.3	1.26
91.96004	852.7	1.24
95.25833	957.9	1.40
98.09703	29981.4	43.76
112.11254	47309.4	69.05
115.12346	9970.5	14.55
116.30014	861.4	1.26
117.57178	837.5	1.22
120.42307	995.1	1.45
126.07518	1098.7	1.60
128.90121	1079.1	1.57
129.13894	4258.8	6.22
130.06544	10355.7	15.11
131.71570	896.9	1.31
165.55182	915.2	1.34
172.14587	925.5	1.35
174.64568	918.1	1.34
178.70560	924.6	1.35
179.58037	1283.3	1.87
186.19720	1482.6	2.16
186.88196	1126.6	1.64
193.26633	1008.9	1.47
196.30930	1097.8	1.60
214.13376	1125.6	1.64
215.11820	68516.1	100.00
225.80413	878.9	1.28
231.50508	1003.8	1.47
241.32903	1202.6	1.76
272.17566	30140.1	43.99
278.26819	977.0	1.43
311.22214	4247.3	6.20
318.04401	965.7	1.41
318.43812	949.3	1.39
328.24967	7928.6	11.57
329.23459	18572.1	27.11
336.99648	1199.9	1.75
346.25974	18884.6	27.56
363.94066	1147.7	1.68
399.32232	14421.9	21.05
400.30753	5898.4	8.61
407.40825	1063.9	1.55
415.65167	1083.9	1.58
417.33348	30246.1	44.14



NL: 9.32E5  
 Pbirulai#3085 RT: 7.72  
 AV: 1 T: FTMS + p ESI  
 Full lock ms  
 [100.00-1500.00]

NL: 6.81E4  
 Pbirulai#3075-3098 RT:  
 7.70-7.75 AV: 4 F: FTMS  
 + p ESI d Full ms2  
 417.33@hcd35.00  
 [50.00-445.00]

Pbirulai#3076-3093 RT: 7.70-7.75 AV: 4

F: FTMS + p ESI d Full ms2 417.33@hcd35.00 [50.00-445.00]

m/z= 50.00000-1000.00000

m/z	Intensity	Relative
52.35387	871.5	1.27
52.98309	667.2	0.97
55.20831	730.9	1.07
59.92139	777.8	1.14
61.03665	821.5	1.20
64.16458	882.7	1.29
66.26734	901.5	1.32
66.35792	740.7	1.08
66.76377	767.9	1.12
67.03477	821.4	1.20
69.39949	765.1	1.12
70.81370	803.3	1.17
72.08153	16625.2	24.26
73.33055	1042.4	1.52
77.20322	858.2	1.25
80.39120	955.3	1.39
83.05848	777.7	1.14
84.95530	856.7	1.25
88.89803	862.3	1.26
91.96004	852.7	1.24
95.25833	957.9	1.40
98.09703	29981.4	43.76
112.11254	47309.4	69.05
115.12346	9970.5	14.55
116.30014	861.4	1.26
117.57178	837.5	1.22
120.42307	995.1	1.45
126.07518	1098.7	1.60
128.90121	1079.1	1.57
129.13894	4258.8	6.22
130.06544	10355.7	15.11
131.71570	896.9	1.31
165.55182	915.2	1.34
172.14587	925.5	1.35
174.64568	918.1	1.34
178.70560	924.6	1.35
179.58037	1283.3	1.87
186.19720	1482.6	2.16
186.88196	1126.6	1.64

Pbirulai#3076-3093 RT: 7.70-7.75 AV: 4

F: FTMS + p ESI d Full ms2 417.33@hcd35.00 [50.00-445.00]

m/z= 50.00000-1000.00000

m/z	Intensity	Relative
193.26633	1008.9	1.47
196.30930	1097.8	1.60
214.13376	1125.6	1.64
215.11820	68516.1	100.00
225.80413	878.9	1.28
231.50508	1003.8	1.47
241.32903	1202.6	1.76
272.17566	30140.1	43.99
278.26819	977.0	1.43
311.22214	4247.3	6.20
318.04401	965.7	1.41
318.43812	949.3	1.39
328.24967	7928.6	11.57
329.23459	18572.1	27.11
336.99648	1199.9	1.75
346.25974	18884.6	27.56
363.94066	1147.7	1.68
399.32232	14421.9	21.05
400.30753	5898.4	8.61
407.40825	1063.9	1.55
415.65167	1083.9	1.58
417.33348	30246.1	44.14