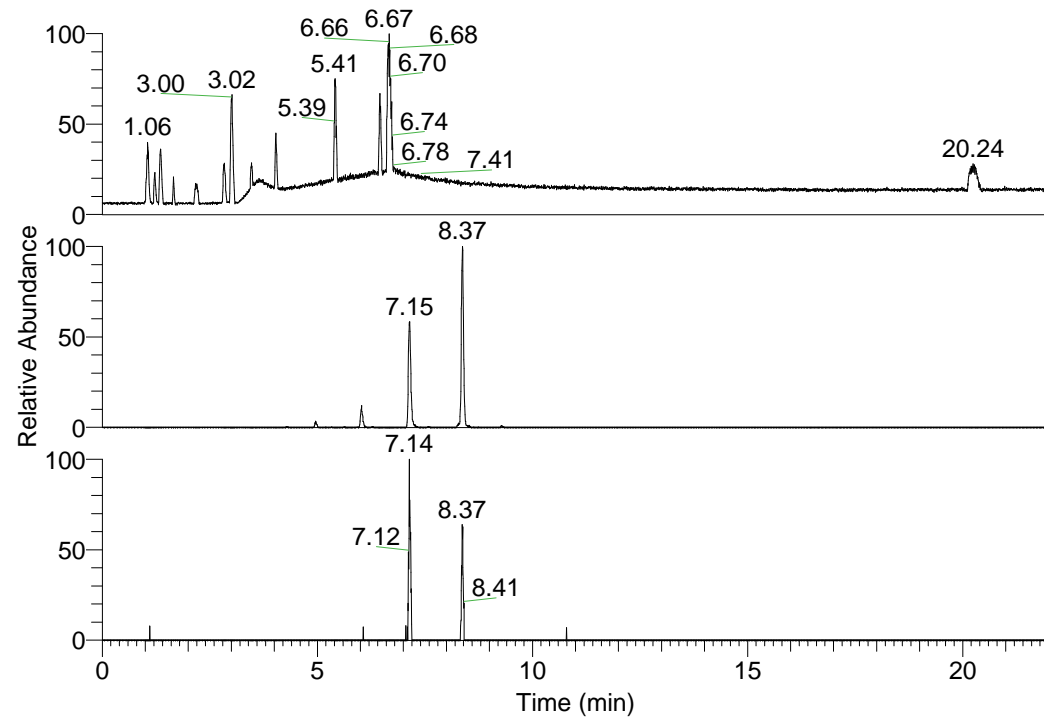


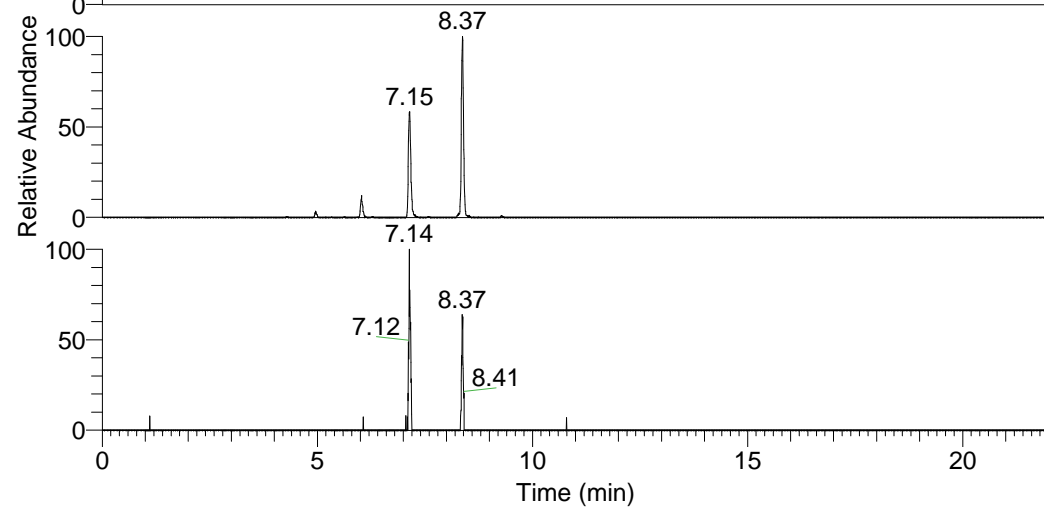
RT: 0.00 - 22.01



NL: 1.25E8
 Base Peak m/z=
 100.00000-1500.00000 F:
 FTMS + p ESI Full ms
 [100.00-1500.00] MS
 Pluctuosa_HDX

Pluctuosa_HDX#1350 RT: 8.37
 T: FTMS + p ESI Full ms [100.00-1500.00]
 m/z = 414.00000-415.00000

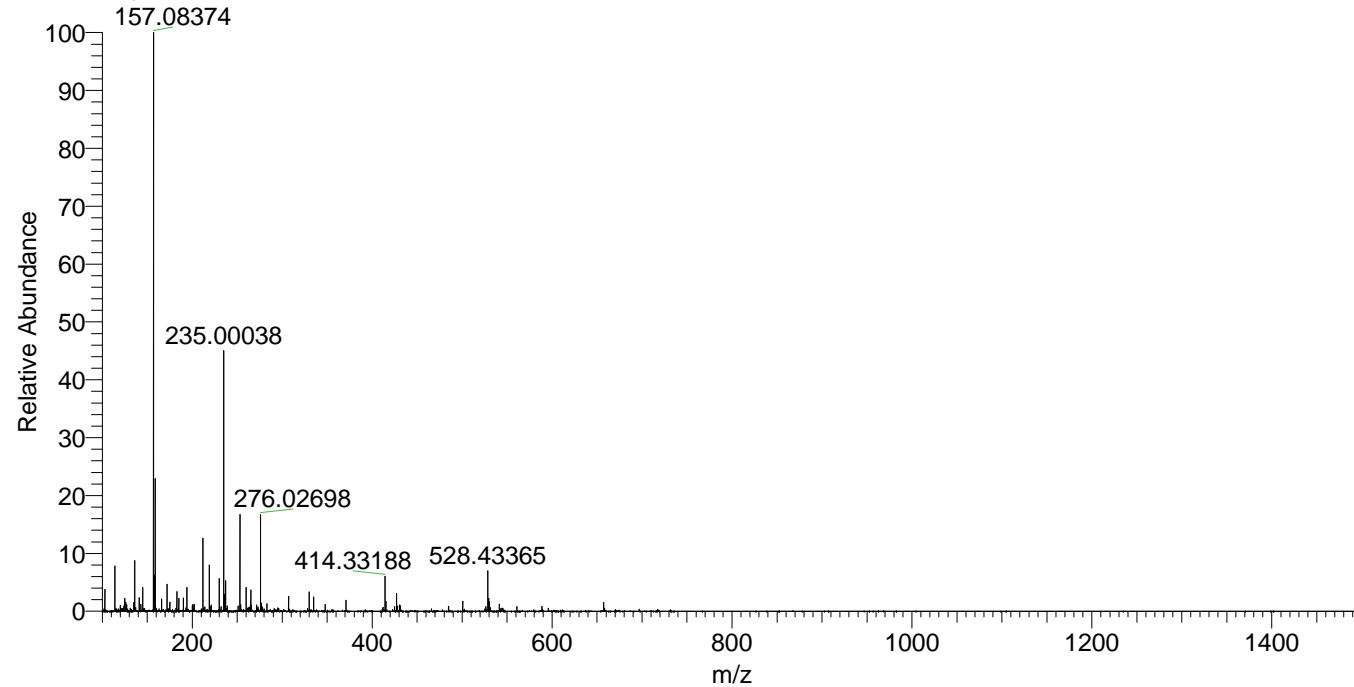
| m/z | Intensity | Relative | Delta (ppm) | Composition |
|-----------|-----------|----------|-------------|---|
| 414.33188 | 1415961.3 | 100.00 | 0.96 | C ₂₁ H ₂₈ ² H ₈ O ₃ N ₅ |
| | | | -2.78 | C ₂₁ H ₃₀ ² H ₇ O ₃ N ₅ |
| | | | 4.70 | C ₂₁ H ₂₆ ² H ₉ O ₃ N ₅ |



NL: 1.42E6
 Base Peak m/z=
 414.32996-414.33410 F:
 FTMS + p ESI Full ms
 [100.00-1500.00] MS
 Pluctuosa_HDX

NL: 5.75E4
 Base Peak m/z=
 208.17203-208.17411 F:
 FTMS + p ESI Full ms
 [100.00-1500.00] MS
 Pluctuosa_HDX

Pluctuosa_HDX #1350 RT: 8.37 AV: 1 NL: 2.19E7
 T: FTMS + p ESI Full ms [100.00-1500.00]



Pluctuosa_HDX #1350 RT: 8.37 AV: 1 NL: 1.33E6
 T: FTMS + p ESI Full ms [100.00-1500.00]

