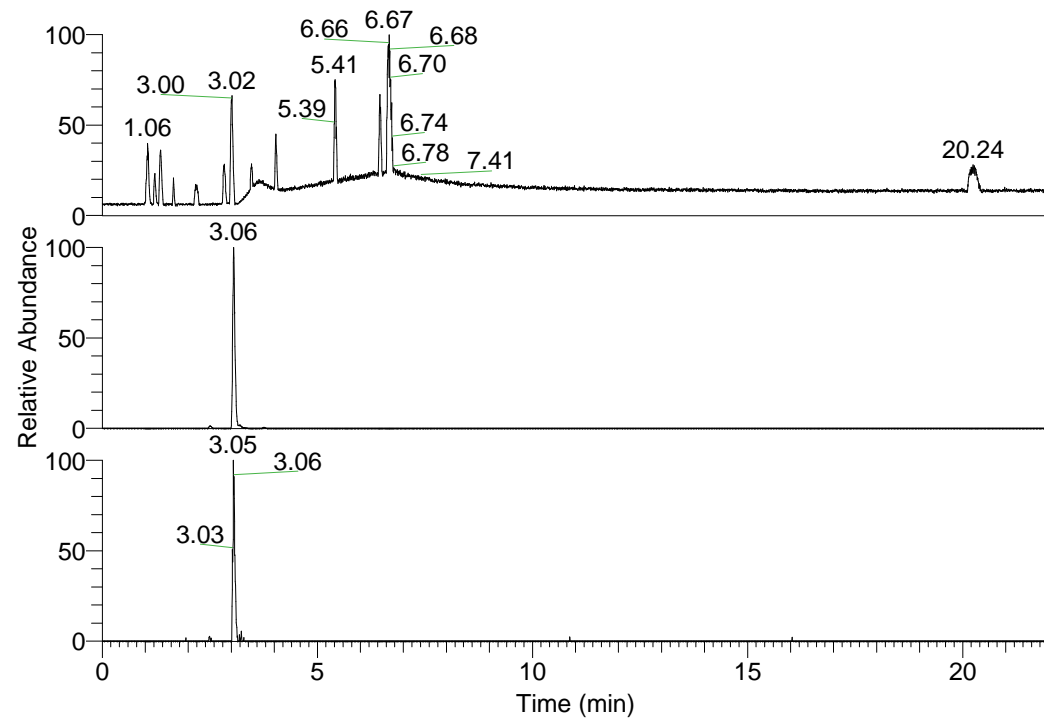


RT: 0.00 - 22.01



NL: 1.25E8
 Base Peak m/z=
 100.00000-1500.00000 F:
 FTMS + p ESI Full ms
 [100.00-1500.00] MS
 Pluctuosa_HDX

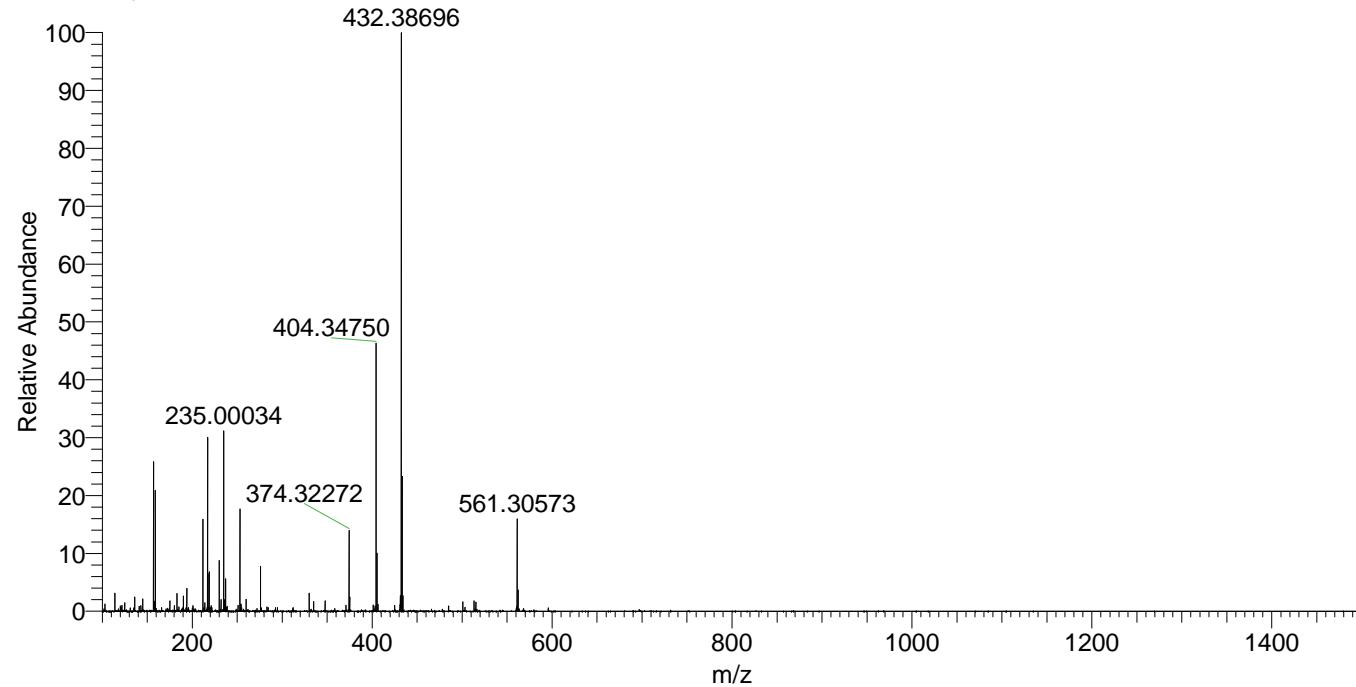
NL: 1.26E7
 Base Peak m/z=
 404.34566-404.34970 F:
 FTMS + p ESI Full ms
 [100.00-1500.00] MS
 Pluctuosa_HDX

NL: 1.40E5
 Base Peak m/z=
 203.17987-203.18191 F:
 FTMS + p ESI Full ms
 [100.00-1500.00] MS
 Pluctuosa_HDX

Pluctuosa_HDX#473 RT: 3.06
 T: FTMS + p ESI Full ms [100.00-1500.00]
 m/z= 404.00000-405.00000

m/z	Intensity	Relative	Delta (ppm)	Composition
404.34756	11874009.0	100.00	1.07	C ₂₀ H ₃₀ ² H ₈ O ₃ N ₅
			-2.76	C ₂₀ H ₃₂ ² H ₇ O ₃ N ₅
			4.90	C ₂₀ H ₂₈ ² H ₉ O ₃ N ₅

Pluctuosa_HDX #472 RT: 3.06 AV: 1 NL: 2.66E7
 T: FTMS + p ESI Full ms [100.00-1500.00]



Pluctuosa_HDX #473 RT: 3.06 AV: 1 NL: 1.17E7
 T: FTMS + p ESI Full ms [100.00-1500.00]

