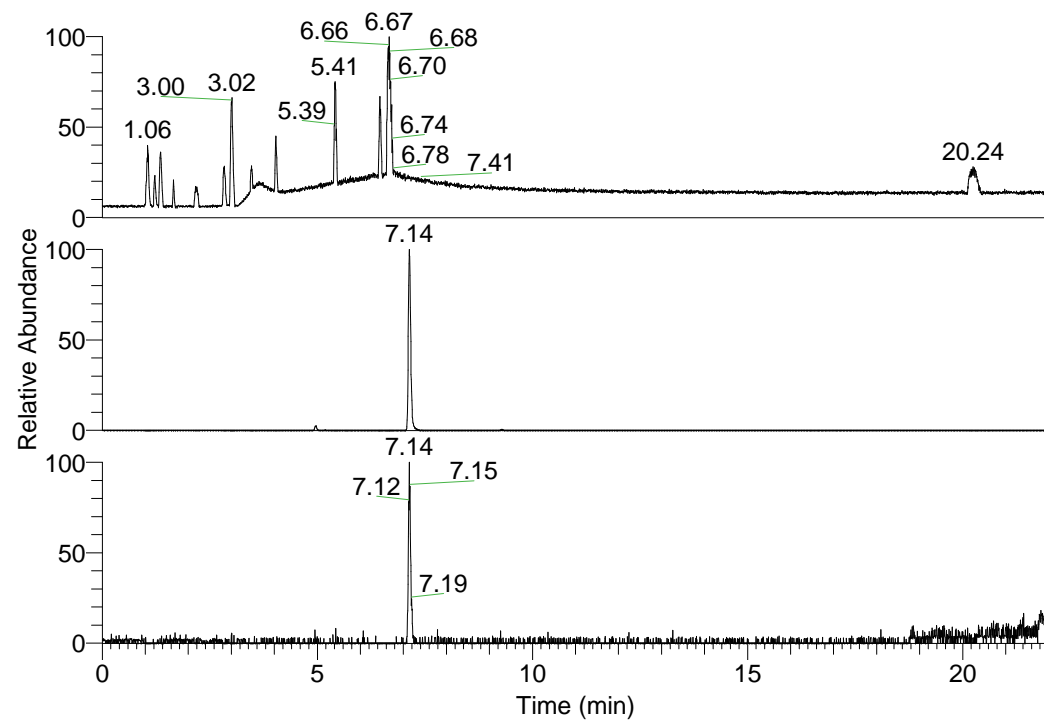


RT: 0.00 - 22.01



NL: 1.25E8  
Base Peak m/z=  
100.00000-1500.00000 F:  
FTMS + p ESI Full ms  
[100.00-1500.00] MS  
Pluctuosa\_HDX

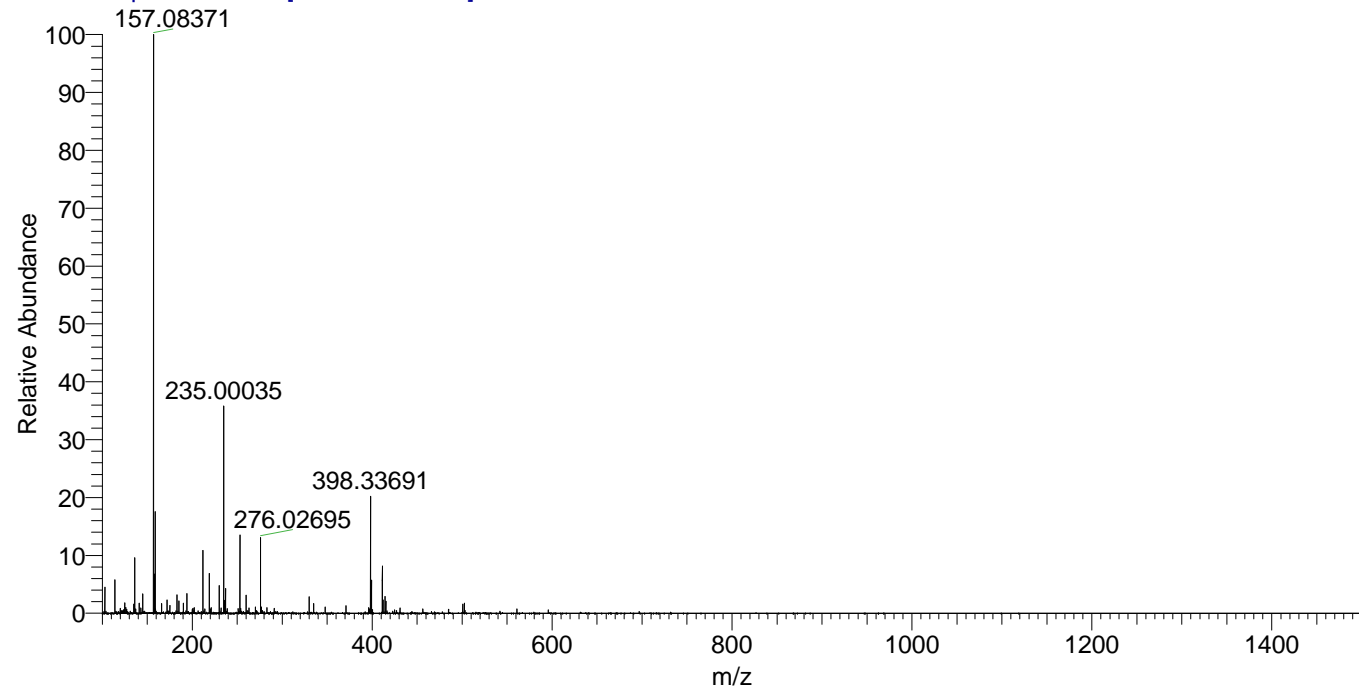
NL: 5.72E6  
Base Peak m/z=  
398.33513-398.33911 F:  
FTMS + p ESI Full ms  
[100.00-1500.00] MS  
Pluctuosa\_HDX

NL: 1.48E5  
Base Peak m/z=  
200.17461-200.17661 F:  
FTMS + p ESI Full ms  
[100.00-1500.00] MS  
Pluctuosa\_HDX

Pluctuosa\_HDX#1148 RT: 7.14  
T: FTMS + p ESI Full ms [100.00-1500.00]  
m/z= 398.00000-399.00000

m/z	Intensity	Relative	Delta (ppm)	Composition
398.33691	5524938.0	100.00	0.87	C <sub>21</sub> H <sub>28</sub> <sup>2</sup> H <sub>8</sub> O <sub>2</sub> N <sub>5</sub>
			-3.01	C <sub>21</sub> H <sub>30</sub> <sup>2</sup> H <sub>7</sub> O <sub>2</sub> N <sub>5</sub>
			4.76	C <sub>21</sub> H <sub>26</sub> <sup>2</sup> H <sub>9</sub> O <sub>2</sub> N <sub>5</sub>

Pluctuosa\_HDX #1148 RT: 7.14 AV: 1 NL: 2.62E7  
T: FTMS + p ESI Full ms [100.00-1500.00]



Pluctuosa\_HDX #1148 RT: 7.14 AV: 1 NL: 5.30E6  
T: FTMS + p ESI Full ms [100.00-1500.00]

