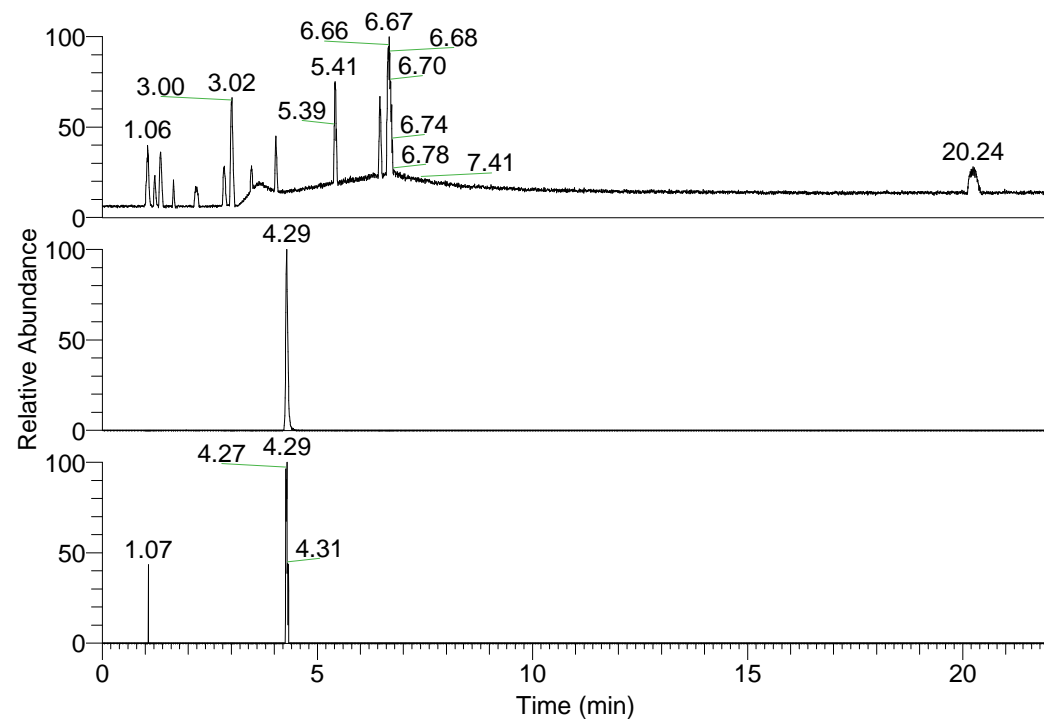


RT: 0.00 - 22.01



NL: 1.25E8
 Base Peak m/z=
 100.00000-1500.00000 F:
 FTMS + p ESI Full ms
 [100.00-1500.00] MS
 Pluctuosa_HDX

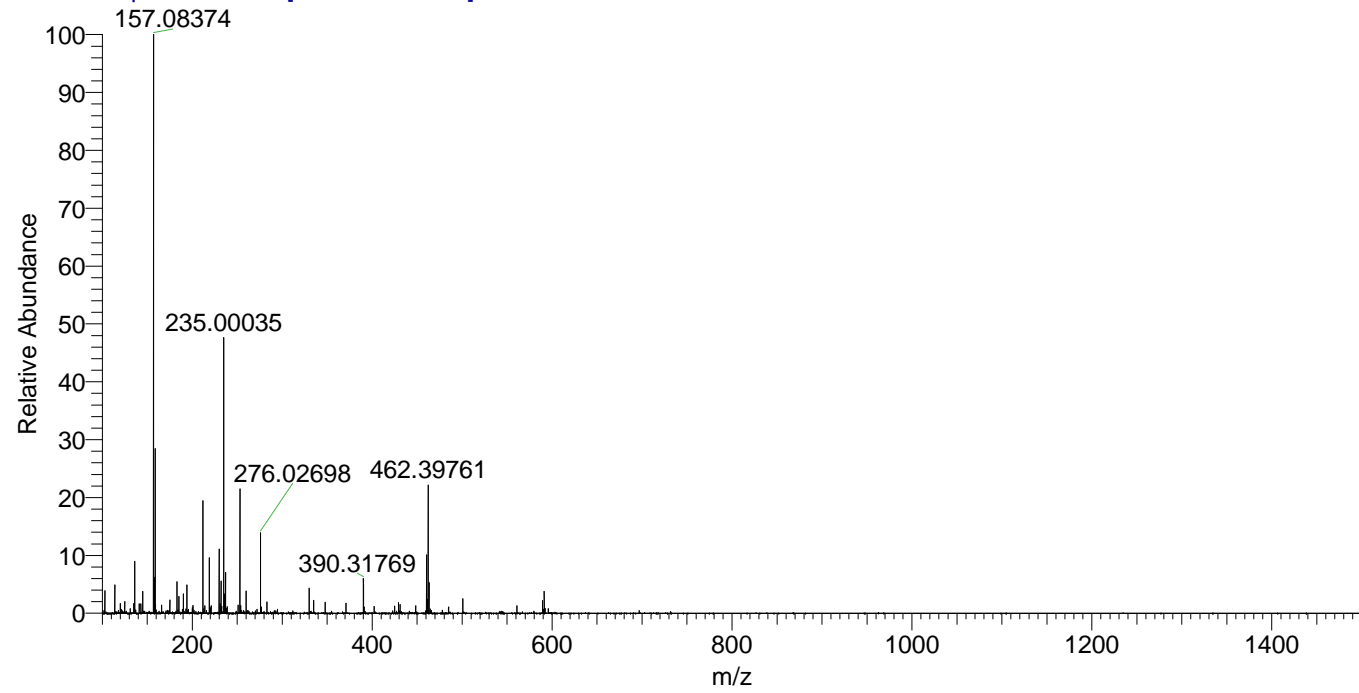
NL: 1.11E6
 Base Peak m/z=
 390.31596-390.31986 F:
 FTMS + p ESI Full ms
 [100.00-1500.00] MS
 Pluctuosa_HDX

NL: 2.87E4
 Base Peak m/z=
 196.16502-196.16698 F:
 FTMS + p ESI Full ms
 [100.00-1500.00] MS
 Pluctuosa_HDX

Pluctuosa_HDX#673 RT: 4.29
 T: FTMS + p ESI Full ms [100.00-1500.00]
 m/z= 390.00000-391.00000

m/z	Intensity	Relative	Delta (ppm)	Composition
390.31769	1108596.9	100.00	0.85	C ₁₈ H ₂₄ ² H ₉ O ₃ N ₆
			-3.12	C ₁₈ H ₂₆ ² H ₈ O ₃ N ₆
			4.82	C ₁₈ H ₂₂ ² H ₁₀ O ₃ N ₆

Pluctuosa_HDX #673 RT: 4.29 AV: 1 NL: 1.85E7
 T: FTMS + p ESI Full ms [100.00-1500.00]



Pluctuosa_HDX #673 RT: 4.29 AV: 1 NL: 1.11E6
 T: FTMS + p ESI Full ms [100.00-1500.00]

