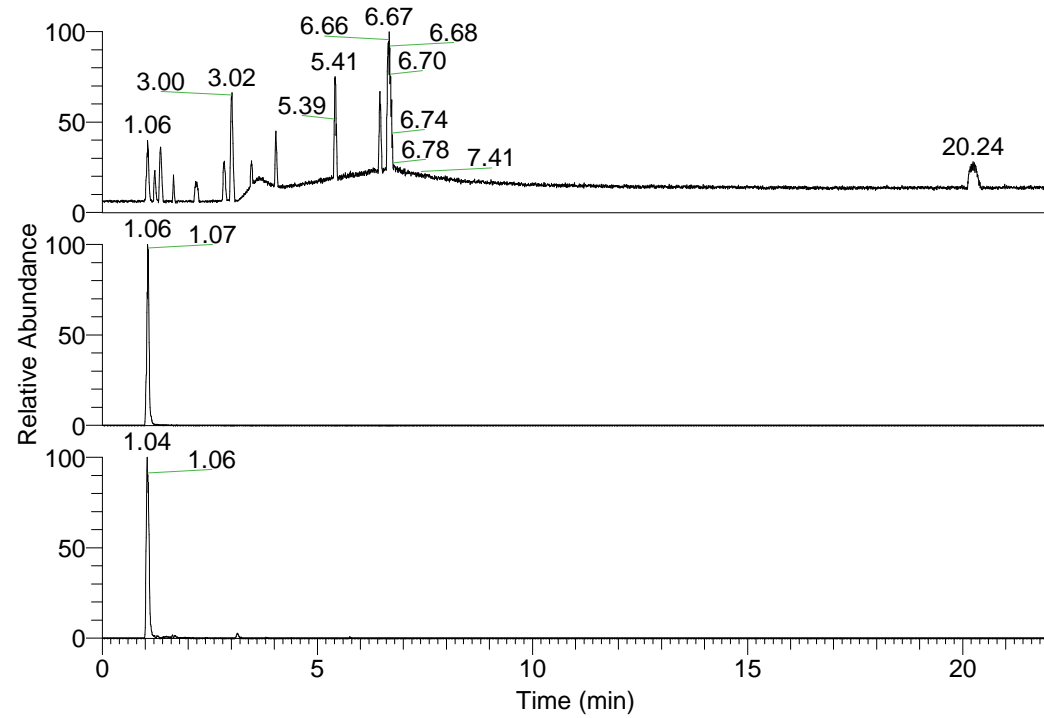


RT: 0.00 - 22.01



NL: 1.25E8  
 Base Peak m/z=  
 100.00000-1500.00000 F:  
 FTMS + p ESI Full ms  
 [100.00-1500.00] MS  
 Pluctuosa\_HDX

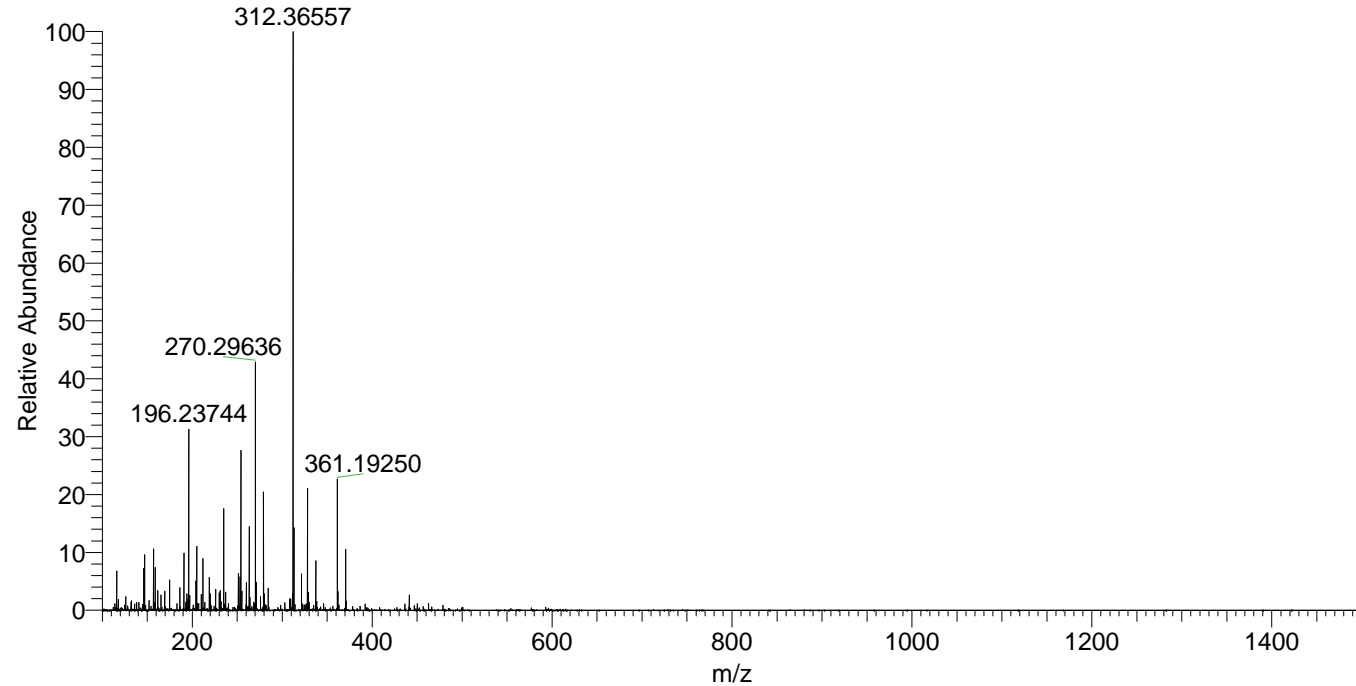
Pluctuosa\_HDX#160 RT: 1.06  
 T: FTMS + p ESI Full ms [100.00-1500.00]  
 m/z= 370.00000-371.00000

m/z	Intensity	Relative	Delta (ppm)	Composition
370.42978	4839768.0	100.00	0.58	C <sub>17</sub> H <sub>32</sub> <sup>2</sup> H <sub>11</sub> N <sub>8</sub>
			-3.60	C <sub>17</sub> H <sub>34</sub> <sup>2</sup> H <sub>10</sub> N <sub>8</sub>
			4.76	C <sub>17</sub> H <sub>30</sub> <sup>2</sup> H <sub>12</sub> N <sub>8</sub>

NL: 4.96E6  
 Base Peak m/z=  
 370.42827-370.43197 F:  
 FTMS + p ESI Full ms  
 [100.00-1500.00] MS  
 Pluctuosa\_HDX

NL: 1.96E6  
 Base Peak m/z=  
 186.22118-186.22304 F:  
 FTMS + p ESI Full ms  
 [100.00-1500.00] MS  
 Pluctuosa\_HDX

Pluctuosa\_HDX #160 RT: 1.06 AV: 1 NL: 4.48E7  
 T: FTMS + p ESI Full ms [100.00-1500.00]



Pluctuosa\_HDX #160 RT: 1.06 AV: 1 NL: 1.02E7  
 T: FTMS + p ESI Full ms [100.00-1500.00]

