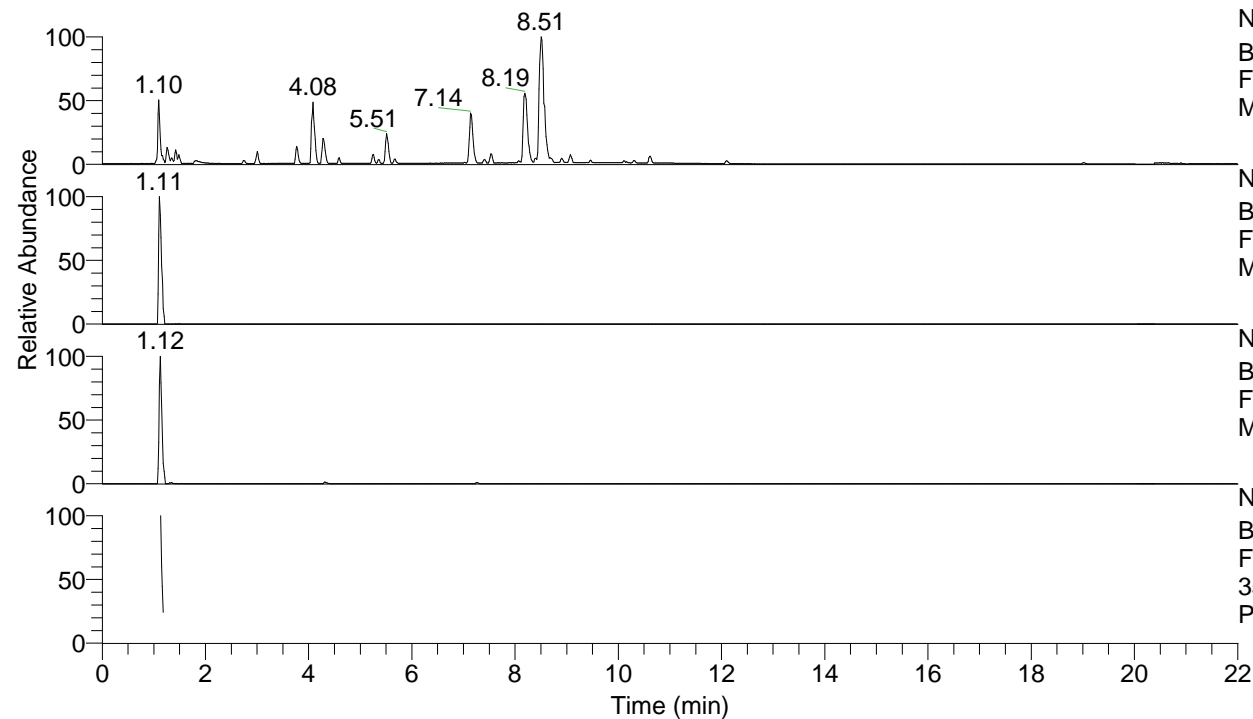


RT: 0.00 - 22.01



NL: 7.88E7
 Base Peak m/z= 100.00000-1500.00000 F:
 FTMS + p ESI Full ms [100.00-1500.00]
 MS Pbirulai

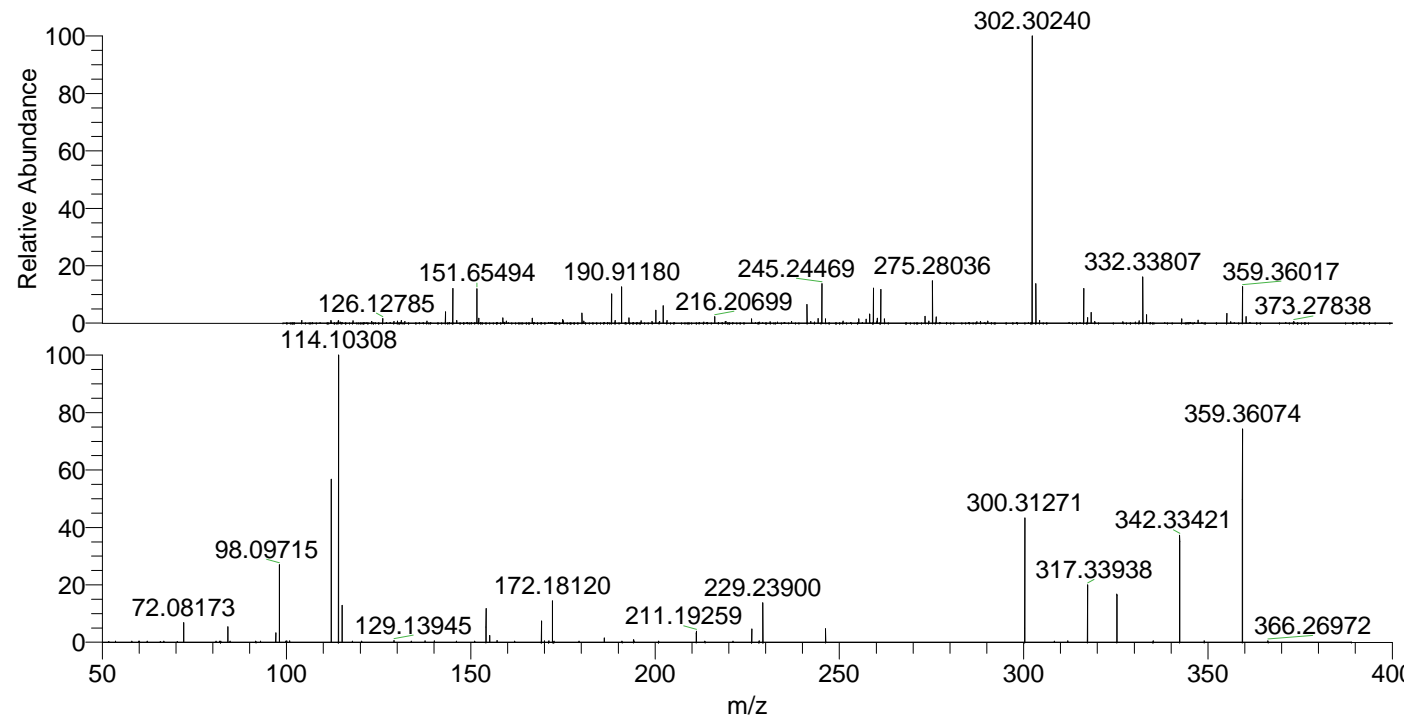
NL: 4.13E6
 Base Peak m/z= 359.35927-359.36287 F:
 FTMS + p ESI Full ms [100.00-1500.00]
 MS Pbirulai

NL: 1.43E6
 Base Peak m/z= 180.18355-180.18535 F:
 FTMS + p ESI Full ms [100.00-1500.00]
 MS Pbirulai

NL: 4.07E5
 Base Peak m/z= 50.00000-1500.00000 F:
 FTMS + p ESI d Full ms2
 359.36@hcd35.00 [50.00-385.00] MS
 Pbirulai

Pbirulai#454-474 RT: 1.13-1.18 AV: 4
 F: FTMS + p ESI d Full ms2 359.36 ...
 m/z= 50.00000-1000.00000

m/z	Intensity	Relative
72.08173	14993.4	6.86
84.08161	12026.0	5.51
97.07684	7211.3	3.30
98.09715	59353.9	27.18
112.10505	1235.5	0.57
112.11265	123509.3	56.55
114.10308	218405.3	100.00
115.12347	27971.9	12.81
129.13945	1432.2	0.66
154.13407	25434.4	11.65
155.15481	5354.8	2.45
157.13342	1401.4	0.64
169.17017	16286.6	7.46
172.18120	31446.9	14.40
186.19707	3162.6	1.45
194.16718	1941.3	0.89
211.19259	8323.5	3.81
226.22886	10090.2	4.62
228.21949	1147.5	0.53
229.23900	30492.4	13.96
246.26564	10377.6	4.75
300.31271	95371.9	43.67
317.33938	43378.9	19.86
325.30768	37457.9	17.15
335.14146	1125.5	0.52
342.33421	82480.7	37.76
359.36074	167182.6	76.55
366.26972	1153.3	0.53



NL: 3.03E7
 Pbirulai#445 RT: 1.11
 AV: 1 T: FTMS + p ESI
 Full ms [100.00-1500.00]

NL: 2.17E5
 Pbirulai#452-475 RT:
 1.13-1.18 AV: 4 F: FTMS
 + p ESI d Full ms2
 359.36@hcd35.00
 [50.00-385.00]