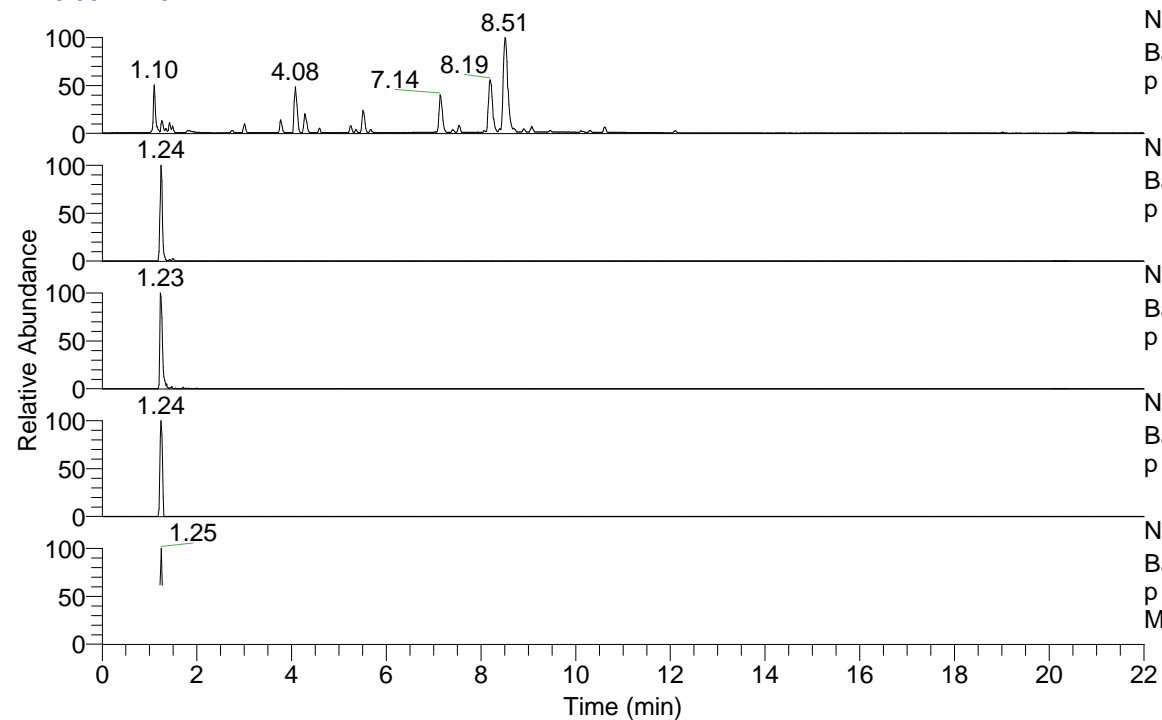


RT: 0.00 - 22.01



NL: 7.88E7  
 Base Peak m/z= 100.00000-1500.00000 F: FTMS +  
 p ESI Full ms [100.00-1500.00] MS Pbirulai

NL: 1.82E6  
 Base Peak m/z= 358.35280-358.35638 F: FTMS +  
 p ESI Full ms [100.00-1500.00] MS Pbirulai

NL: 1.83E5  
 Base Peak m/z= 179.68031-179.68211 F: FTMS +  
 p ESI Full ms [100.00-1500.00] MS Pbirulai

NL: 2.39E4  
 Base Peak m/z= 472.34509-472.34981 F: FTMS +  
 p ESI Full ms [100.00-1500.00] MS Pbirulai

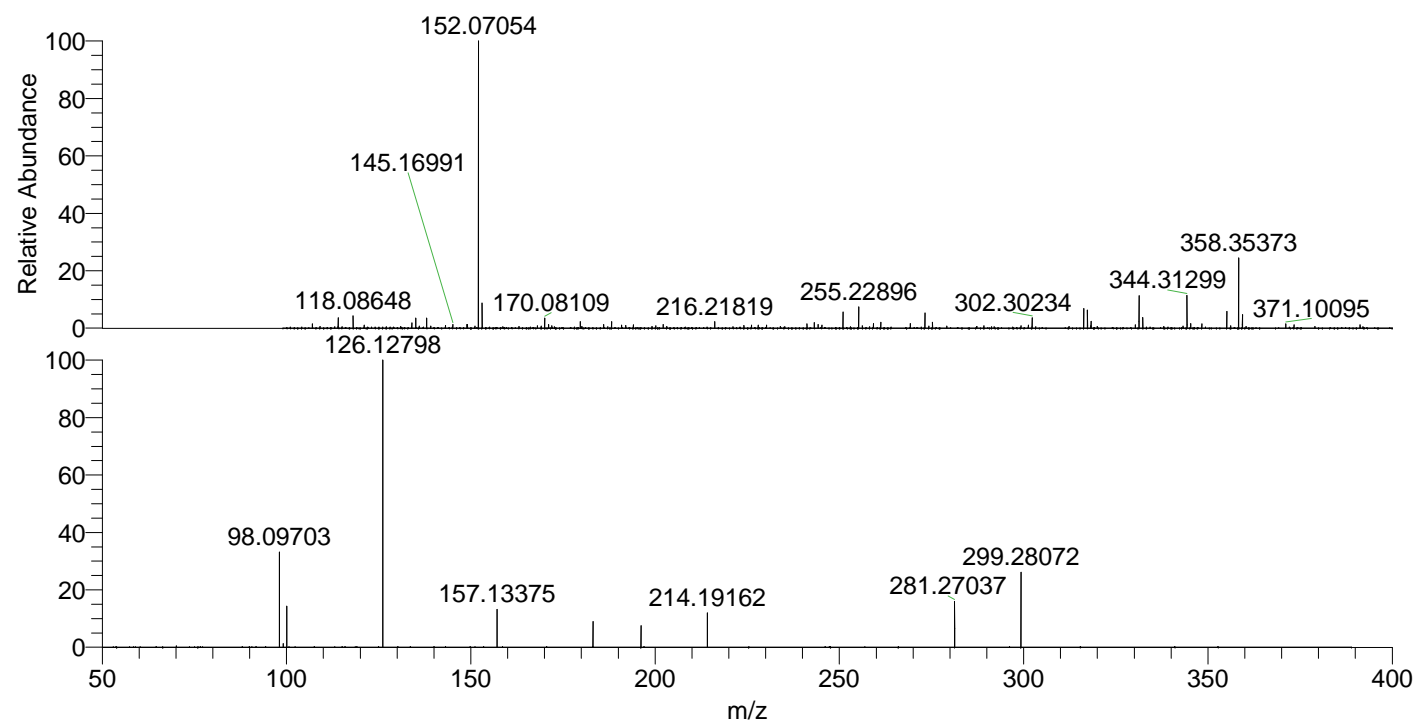
NL: 5.39E5  
 Base Peak m/z= 50.00000-1500.00000 F: FTMS +  
 p ESI d Full ms2 358.35@hcd35.00 [50.00-385.00]  
 MS Pbirulai

Pbirulai#490-507 RT: 1.22-1.26 AV: 4

F: FTMS + p ESI d Full ms2 358.35 ...

m/z= 50.00000-1000.00000

m/z	Intensity	Relative
98.09703	125674.6	32.21
99.09231	4853.2	1.24
100.07622	54690.5	14.02
126.12798	390177.4	100.00
157.13375	49851.1	12.78
183.18586	34126.1	8.75
196.18081	28432.7	7.29
214.19162	46925.0	12.03
281.27037	60794.3	15.58
299.28072	98818.3	25.33



NL: 7.39E6  
 Pbirulai#499 RT: 1.24  
 AV: 1 T: FTMS + p ESI  
 Full lock ms  
 [100.00-1500.00]

NL: 3.78E5  
 Pbirulai#486-515 RT:  
 1.22-1.26 AV: 4 F: FTMS  
 + p ESI d Full ms2  
 358.35@hcd35.00  
 [50.00-385.00]