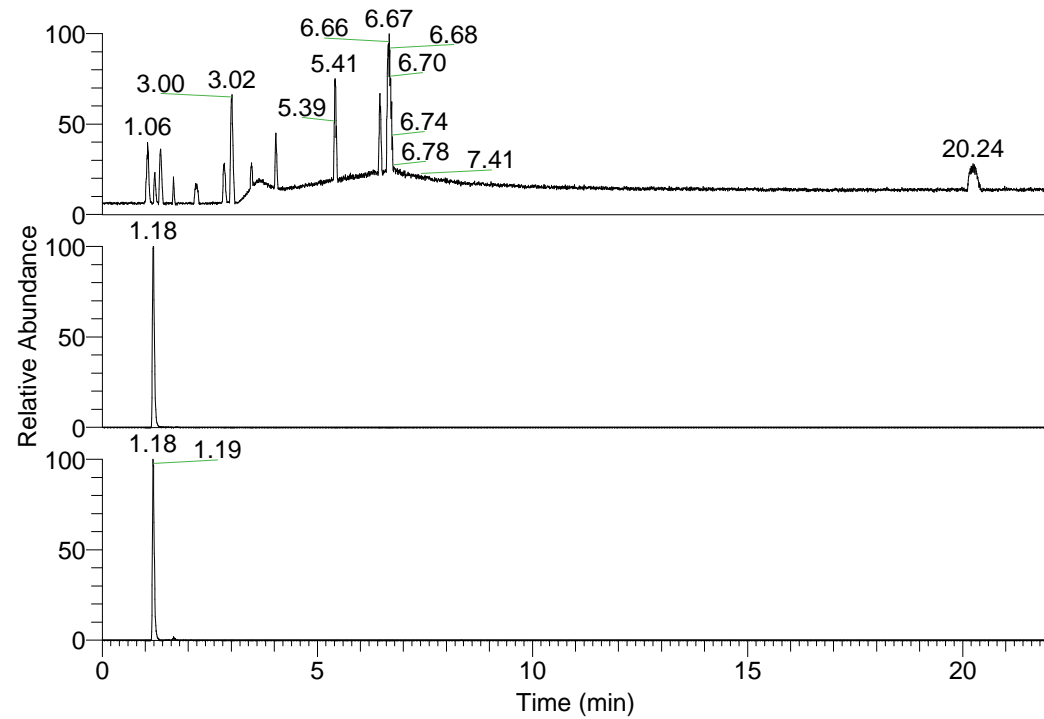


RT: 0.00 - 22.01



NL: 1.25E8
Base Peak m/z=
100.00000-1500.00000 F:
FTMS + p ESI Full ms
[100.00-1500.00] MS
Pluctuosa_HDX

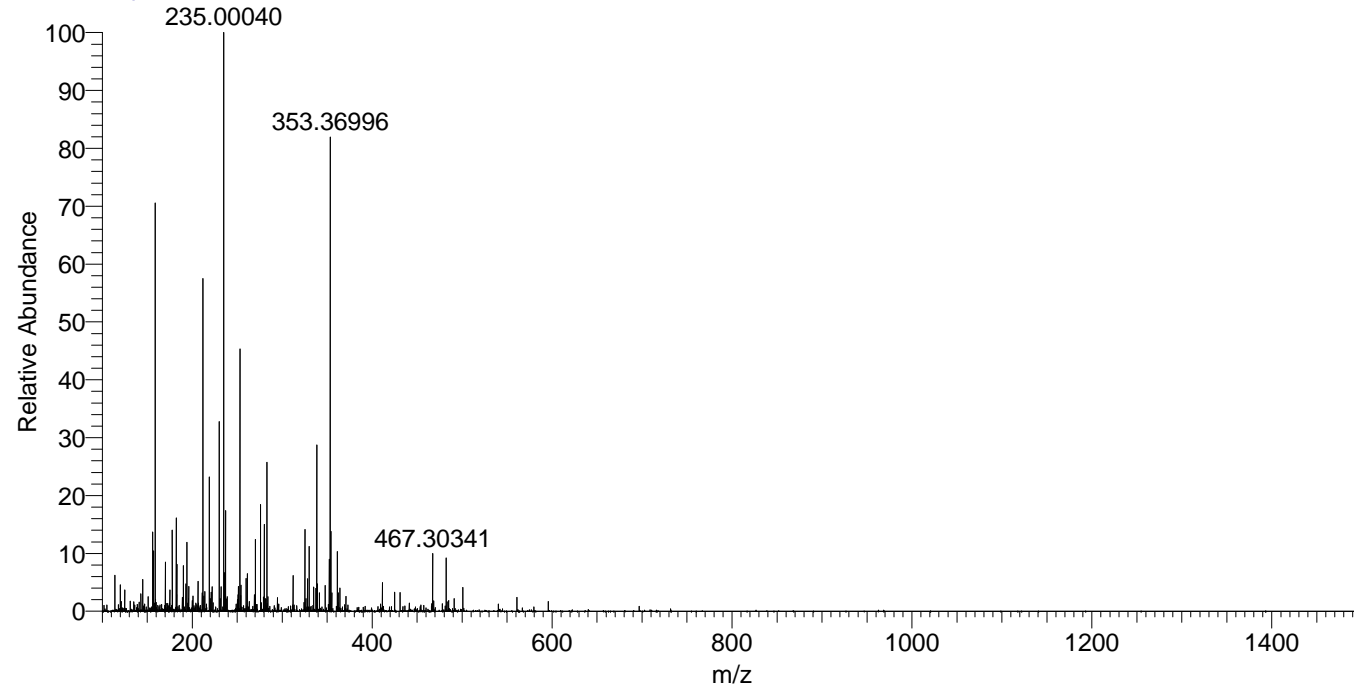
NL: 6.74E6
Base Peak m/z=
353.36851-353.37205 F:
FTMS + p ESI Full ms
[100.00-1500.00] MS
Pluctuosa_HDX

NL: 1.11E6
Base Peak m/z=
177.69130-177.69308 F:
FTMS + p ESI Full ms
[100.00-1500.00] MS
Pluctuosa_HDX

Pluctuosa_HDX#180 RT: 1.18
T: FTMS + p ESI Full ms [100.00-1500.00]
m/z= 353.00000-354.00000

m/z	Intensity	Relative	Delta (ppm)	Composition
353.36996	6668907.5	100.00	0.67	C ₁₆ H ₂₉ ² H ₉ ON ₇
			-3.71	C ₁₆ H ₃₁ ² H ₈ ON ₇

Pluctuosa_HDX #180 RT: 1.18 AV: 1 NL: 7.84E6
T: FTMS + p ESI Full ms [100.00-1500.00]



Pluctuosa_HDX #180 RT: 1.18 AV: 1 NL: 6.42E6
T: FTMS + p ESI Full ms [100.00-1500.00]

