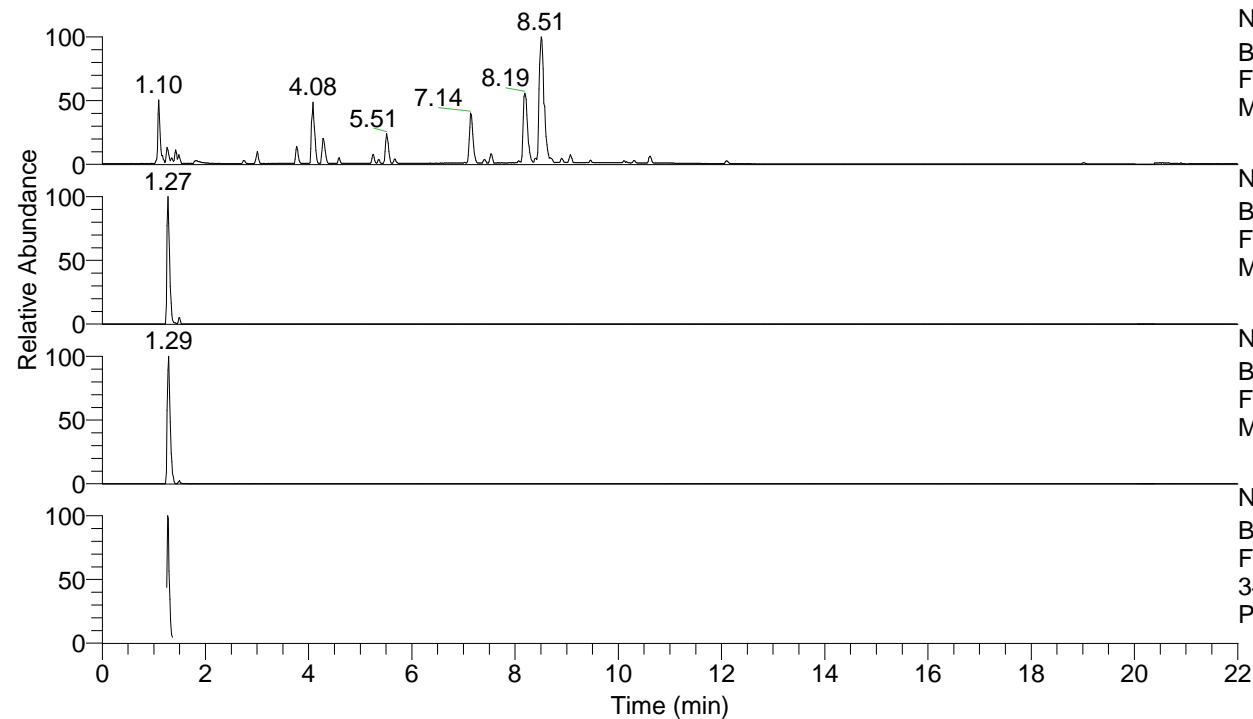


RT: 0.00 - 22.01



NL: 7.88E7
 Base Peak m/z= 100.00000-1500.00000 F:
 FTMS + p ESI Full ms [100.00-1500.00]
 MS Pbirulai

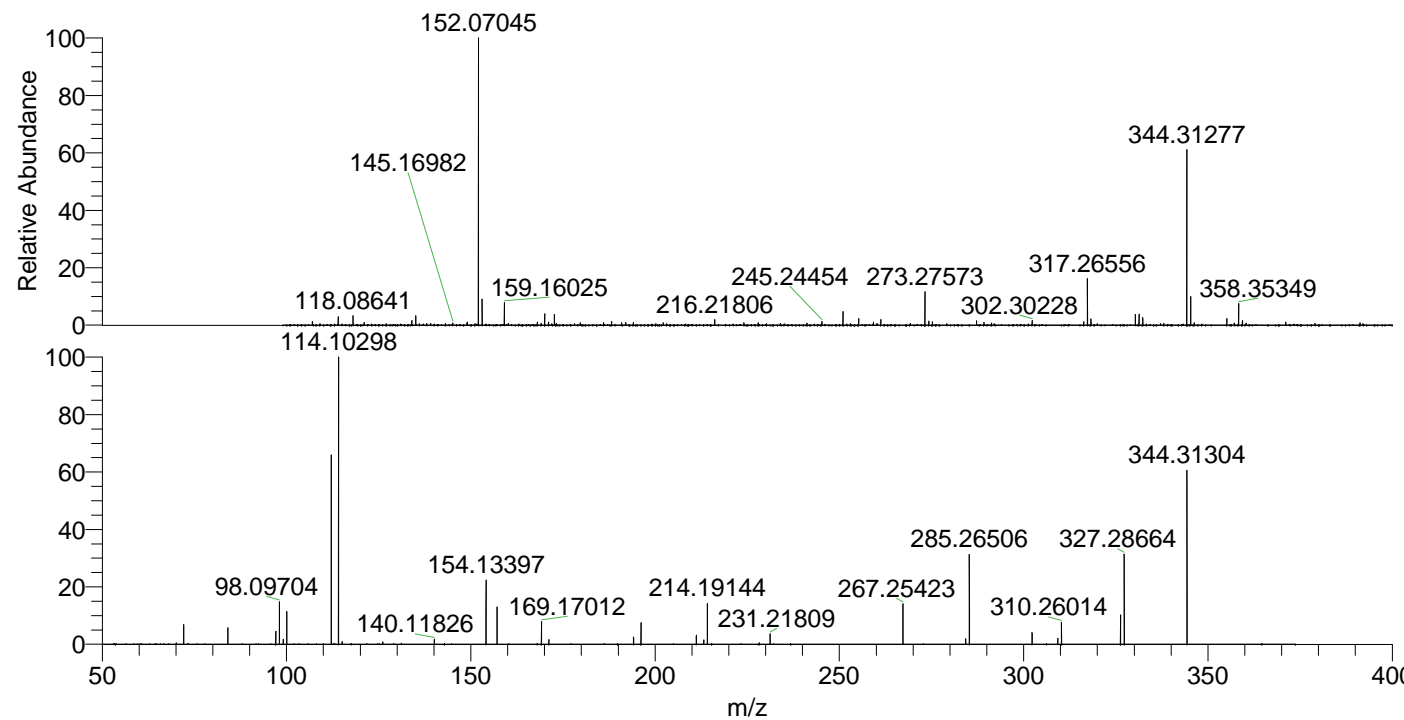
NL: 5.40E6
 Base Peak m/z= 344.31206-344.31550 F:
 FTMS + p ESI Full ms [100.00-1500.00]
 MS Pbirulai

NL: 3.64E5
 Base Peak m/z= 172.65994-172.66166 F:
 FTMS + p ESI Full ms [100.00-1500.00]
 MS Pbirulai

NL: 7.83E5
 Base Peak m/z= 50.00000-1500.00000 F:
 FTMS + p ESI d Full ms2
 344.31@hcd35.00 [50.00-370.00] MS
 Pbirulai

Pbirulai#502-525 RT: 1.25-1.31 AV: 5
 F: FTMS + p ESI d Full ms2 344.31 ...
 m/z= 50.00000-1000.00000

m/z	Intensity	Relative
70.06587	2535.0	0.52
72.08161	33478.9	6.89
84.08144	28233.9	5.81
97.07672	21740.5	4.48
98.09704	72546.6	14.94
99.09232	8726.3	1.80
100.07627	55115.6	11.35
112.11259	319606.7	65.80
114.10298	485740.8	100.00
114.12811	2787.2	0.57
115.12335	4831.3	0.99
126.12807	4204.5	0.87
140.11826	8585.1	1.77
154.13397	108313.2	22.30
157.13388	63485.4	13.07
169.17012	38458.4	7.92
171.16052	7948.0	1.64
194.16575	12272.7	2.53
196.18112	36406.1	7.49
211.19230	15617.6	3.22
213.20749	7497.8	1.54
214.19144	68959.3	14.20
231.21809	18348.6	3.78
267.25423	69187.7	14.24
284.28163	9331.6	1.92
285.26506	152450.7	31.39
302.29178	19934.5	4.10
309.27622	10116.1	2.08
310.26014	37583.4	7.74
326.30246	50157.3	10.33
327.28664	154274.4	31.76
344.31304	294815.3	60.69



NL: 8.81E6
 Pbirulai#511 RT: 1.27
 AV: 1 T: FTMS + p ESI
 Full lock ms
 [100.00-1500.00]

NL: 4.84E5
 Pbirulai#501-529 RT:
 1.25-1.31 AV: 5 F: FTMS
 + p ESI d Full ms2
 344.31@hcd35.00
 [50.00-370.00]