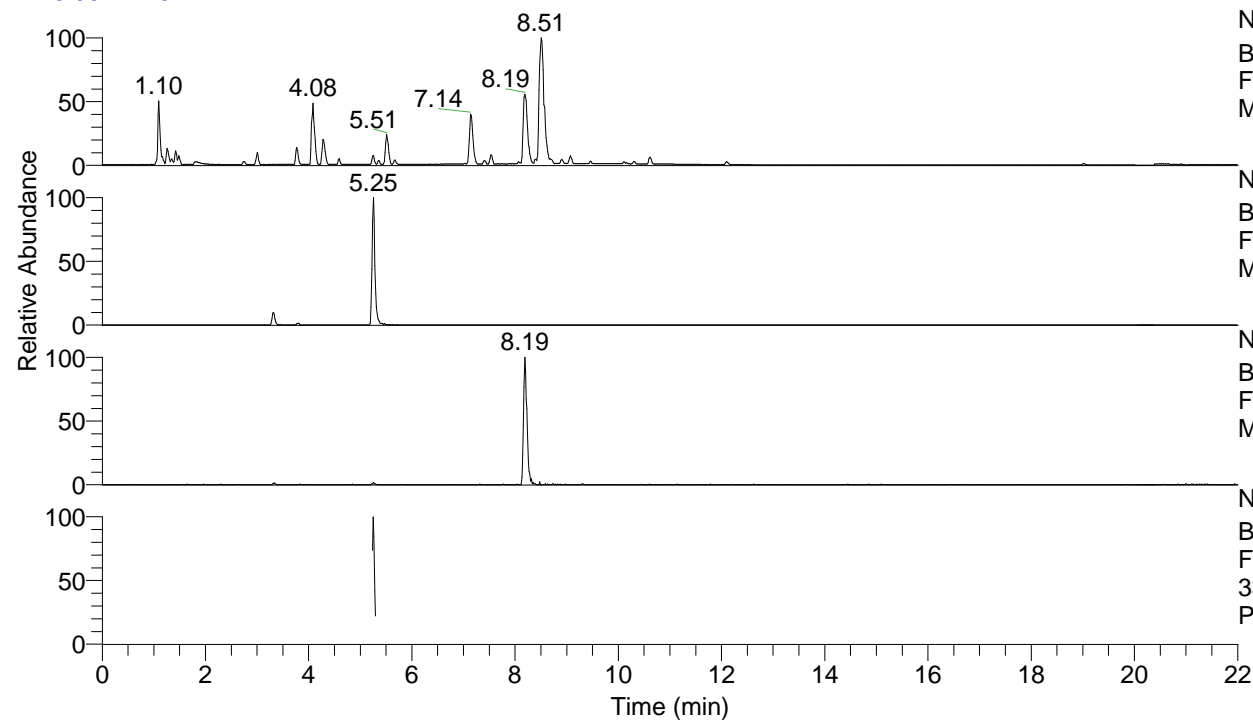


RT: 0.00 - 22.01



NL: 7.88E7
 Base Peak m/z= 100.00000-1500.00000 F:
 FTMS + p ESI Full ms [100.00-1500.00]
 MS Pbirulai

NL: 5.44E5
 Base Peak m/z= 337.25866-337.26204 F:
 FTMS + p ESI Full ms [100.00-1500.00]
 MS Pbirulai

NL: 2.45E5
 Base Peak m/z= 169.13324-169.13494 F:
 FTMS + p ESI Full ms [100.00-1500.00]
 MS Pbirulai

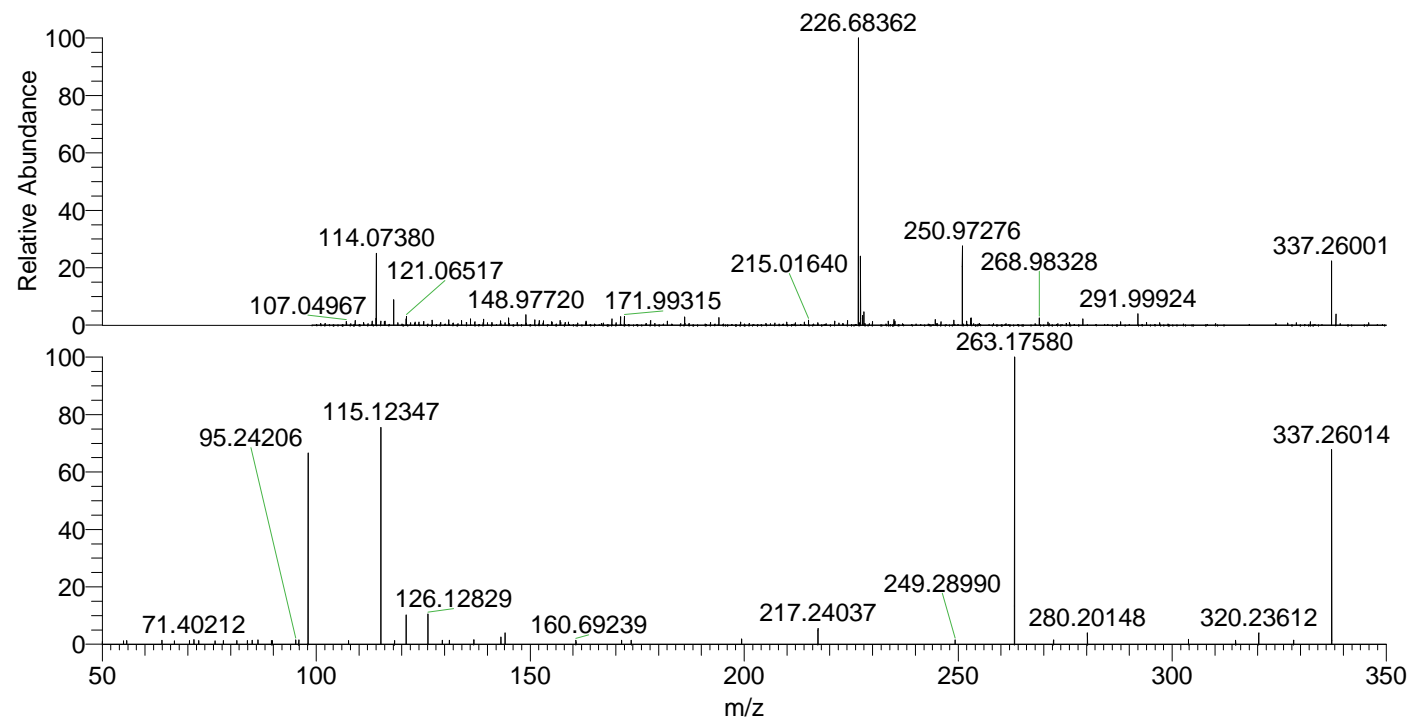
NL: 8.47E4
 Base Peak m/z= 50.00000-1500.00000 F:
 FTMS + p ESI d Full ms2
 337.26@hcd35.00 [50.00-360.00] MS
 Pbirulai

Pbirulai#2094-2112 RT: 5.23-5.28 AV: 4

F: FTMS + p ESI d Full ms2 337.26 ...

m/z= 50.00000-1000.00000

m/z	Intensity	Relative
50.01084	563.7	0.95
54.98835	688.2	1.16
55.74038	764.0	1.29
63.97794	842.7	1.42
66.86723	726.7	1.22
70.34868	723.5	1.22
71.40212	955.4	1.61
72.55438	777.2	1.31
76.35268	721.7	1.21
78.29721	767.7	1.29
81.47633	776.5	1.31
83.91541	774.2	1.30
85.01942	850.1	1.43
86.37679	868.4	1.46
89.56499	785.4	1.32
89.78739	774.6	1.30
95.24206	904.8	1.52
95.92864	881.5	1.48
98.09712	39119.2	65.85
107.55368	764.8	1.29
115.12347	44551.5	74.99
118.29370	725.2	1.22
121.02901	6031.5	10.15
126.12829	6248.8	10.52
129.45512	841.0	1.42
131.11876	792.9	1.33
136.83640	915.1	1.54
143.15465	1488.6	2.51
144.13908	2345.6	3.95
160.69239	842.7	1.42
171.35008	833.2	1.40
173.62561	807.6	1.36
199.40572	1085.0	1.83
217.24037	3217.9	5.42
249.28990	868.6	1.46
263.17580	59409.4	100.00
272.29287	940.2	1.58
280.20148	2373.0	3.99
303.83101	985.0	1.66
314.83078	846.4	1.42
320.23612	2334.6	3.93
328.38357	854.0	1.44
337.26014	40394.5	67.99
352.33053	895.7	1.51



NL: 2.44E6
 Pbirulai#2101 RT: 5.25
 AV: 1 T: FTMS + p ESI
 Full lock ms
 [100.00-1500.00]

NL: 5.87E4
 Pbirulai#2091-2116 RT:
 5.23-5.28 AV: 4 F: FTMS
 + p ESI d Full ms2
 337.26@hcd35.00
 [50.00-360.00]