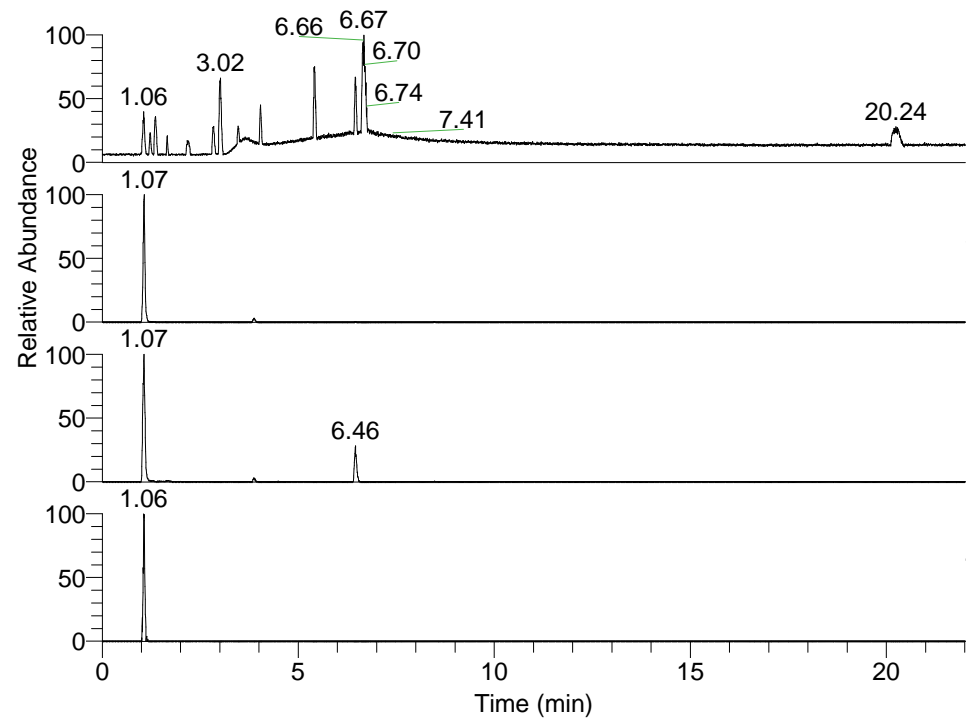


RT: 0.00 - 22.01



NL: 1.25E8
 Base Peak m/z=
 100.00000-1500.00000 F: FTMS + p
 ESI Full ms [100.00-1500.00] MS
 Pluctuosa_HDX

NL: 4.15E6
 Base Peak m/z=
 337.36863-337.37201 F: FTMS + p
 ESI Full ms [100.00-1500.00] MS
 Pluctuosa_HDX

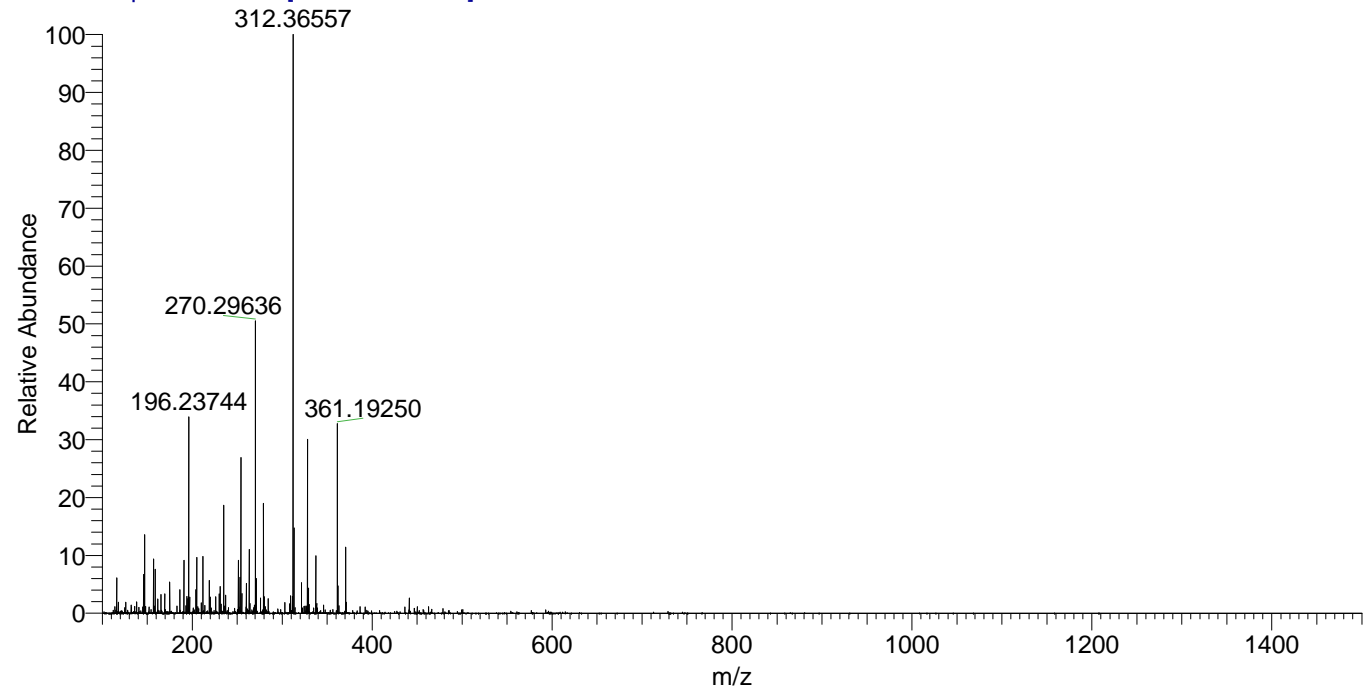
NL: 1.67E6
 Base Peak m/z=
 169.69136-169.69306 F: FTMS + p
 ESI Full ms [100.00-1500.00] MS
 Pluctuosa_HDX

NL: 1.92E5
 Base Peak m/z=
 452.36720-452.37172 F: FTMS + p
 ESI Full ms [100.00-1500.00] MS
 Pluctuosa_HDX

Pluctuosa_HDX#162 RT: 1.07
 T: FTMS + p ESI Full ms [100.00-1500.00]
 m/z= 337.00000-338.00000

m/z	Intensity	Relative	Delta (ppm)	Composition
337.36987	4147788.0	100.00	0.30	C ₁₇ H ₃₇ ² H ₅ ON ₅
			-4.29	C ₁₇ H ₃₉ ² H ₄ ON ₅
			4.89	C ₁₇ H ₃₅ ² H ₆ ON ₅

Pluctuosa_HDX #162 RT: 1.07 AV: 1 NL: 4.11E7
 T: FTMS + p ESI Full ms [100.00-1500.00]



Pluctuosa_HDX #162 RT: 1.07 AV: 1 NL: 1.23E7
 T: FTMS + p ESI Full ms [100.00-1500.00]

