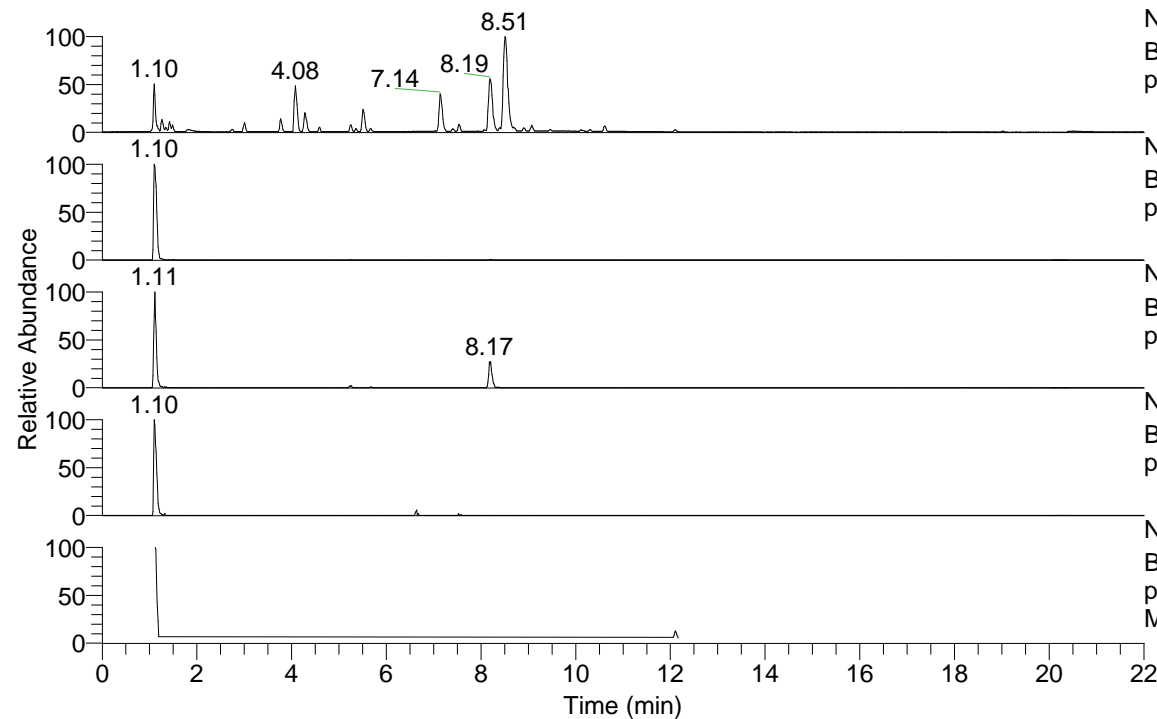


RT: 0.00 - 22.01



NL: 7.88E7  
 Base Peak m/z= 100.00000-1500.00000 F: FTMS +  
 p ESI Full ms [100.00-1500.00] MS Pbirulai

NL: 5.34E6  
 Base Peak m/z= 332.33728-332.34060 F: FTMS +  
 p ESI Full ms [100.00-1500.00] MS Pbirulai

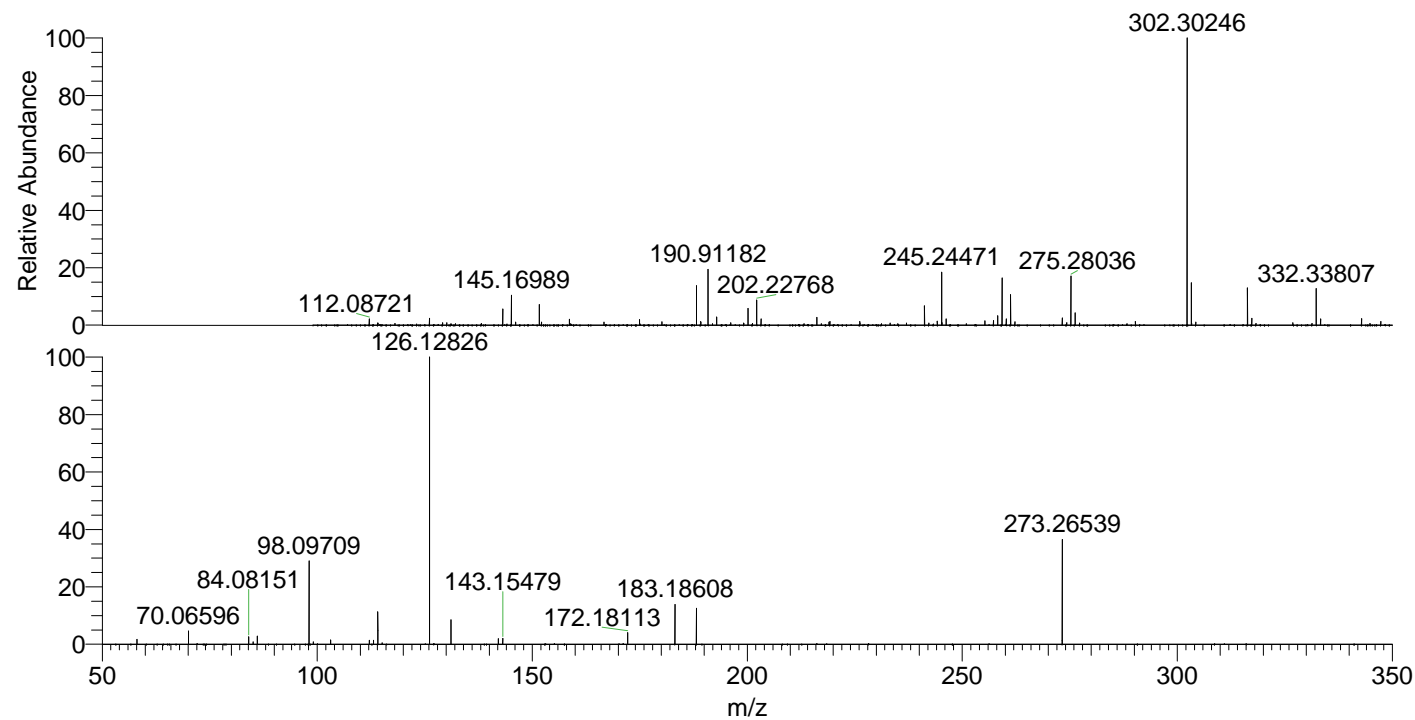
NL: 5.61E5  
 Base Peak m/z= 166.67255-166.67421 F: FTMS +  
 p ESI Full ms [100.00-1500.00] MS Pbirulai

NL: 2.26E5  
 Base Peak m/z= 446.32957-446.33403 F: FTMS +  
 p ESI Full ms [100.00-1500.00] MS Pbirulai

NL: 1.17E6  
 Base Peak m/z= 50.00000-1500.00000 F: FTMS +  
 p ESI d Full ms2 332.20@hcd35.00 [50.00-355.00]  
 MS Pbirulai

Pbirulai#480 RT: 1.19  
 F: FTMS + p ESI d Full ms2 332.20 ...  
 m/z= 50.00000-1000.00000

m/z	Intensity	Relative
51.67252	2397.2	2.94
70.06586	3947.8	4.83
70.54123	2917.5	3.57
98.09676	26356.4	32.28
99.43757	3042.2	3.73
114.09183	5538.0	6.78
121.33655	3609.0	4.42
126.12791	81652.2	100.00
131.11858	15345.2	18.79
131.61459	3880.4	4.75
158.43233	3438.4	4.21
183.18529	4867.0	5.96
188.17615	15282.9	18.72
260.78845	3628.4	4.44
273.26395	25064.8	30.70



NL: 3.95E7  
 Pbirulai#439 RT: 1.10  
 AV: 1 T: FTMS + p ESI  
 Full ms [100.00-1500.00]

NL: 7.38E5  
 Pbirulai#445-477 RT:  
 1.12-1.18 AV: 5 F: FTMS  
 + p ESI d Full ms2  
 332.20@hcd35.00  
 [50.00-355.00]