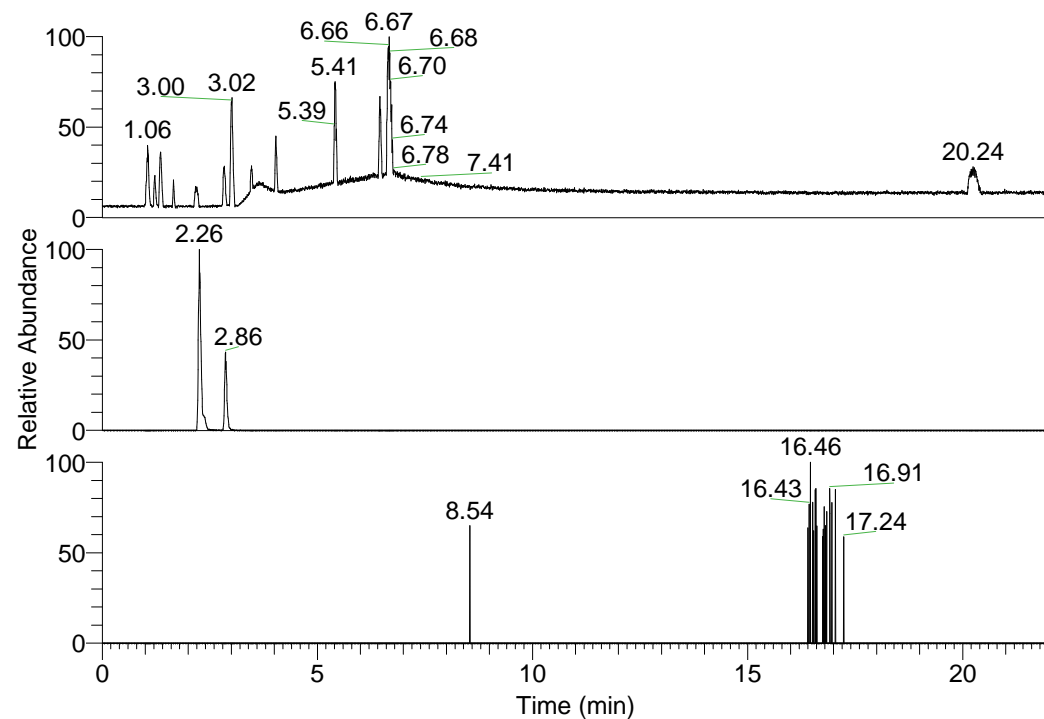


RT: 0.00 - 22.01



NL: 1.25E8
 Base Peak m/z=
 100.00000-1500.00000 F:
 FTMS + p ESI Full ms
 [100.00-1500.00] MS
 Pluctuosa_HDX

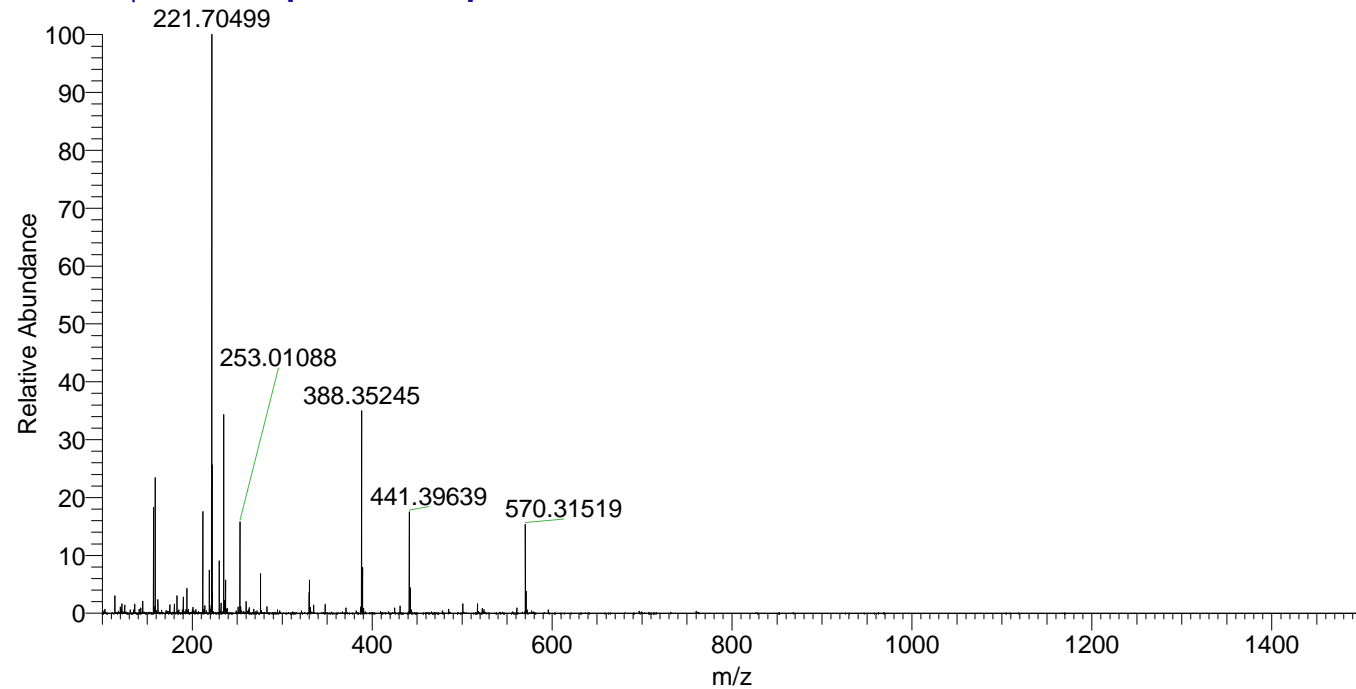
NL: 3.67E6
 Base Peak m/z=
 330.28699-330.29029 F:
 FTMS + p ESI Full ms
 [100.00-1500.00] MS
 Pluctuosa_HDX

NL: 5.46E3
 Base Peak m/z=
 166.15054-166.15220 F:
 FTMS + p ESI Full ms
 [100.00-1500.00] MS
 Pluctuosa_HDX

Pluctuosa_HDX#439 RT: 2.86
 T: FTMS + p ESI Full ms [100.00-1500.00]
 m/z= 330.00000-331.00000

m/z	Intensity	Relative	Delta (ppm)	Composition
330.28827	1553408.8	100.00	0.54	C ₁₇ H ₂₄ ² H ₇ O ₂ N ₄
			-4.15	C ₁₇ H ₂₆ ² H ₆ O ₂ N ₄

Pluctuosa_HDX #439 RT: 2.86 AV: 1 NL: 2.69E7
 T: FTMS + p ESI Full ms [100.00-1500.00]



Pluctuosa_HDX #439 RT: 2.86 AV: 1 NL: 1.55E6
 T: FTMS + p ESI Full ms [100.00-1500.00]

