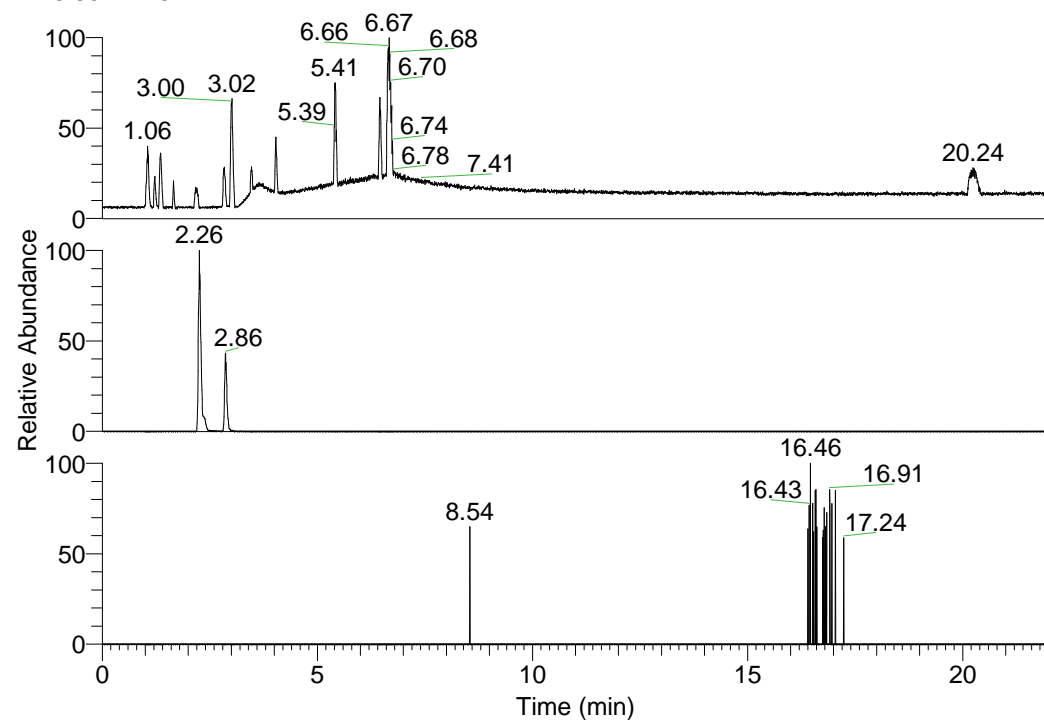


RT: 0.00 - 22.01



NL: 1.25E8  
 Base Peak m/z=  
 100.00000-1500.00000 F:  
 FTMS + p ESI Full ms  
 [100.00-1500.00] MS  
 Pluctuosa\_HDX

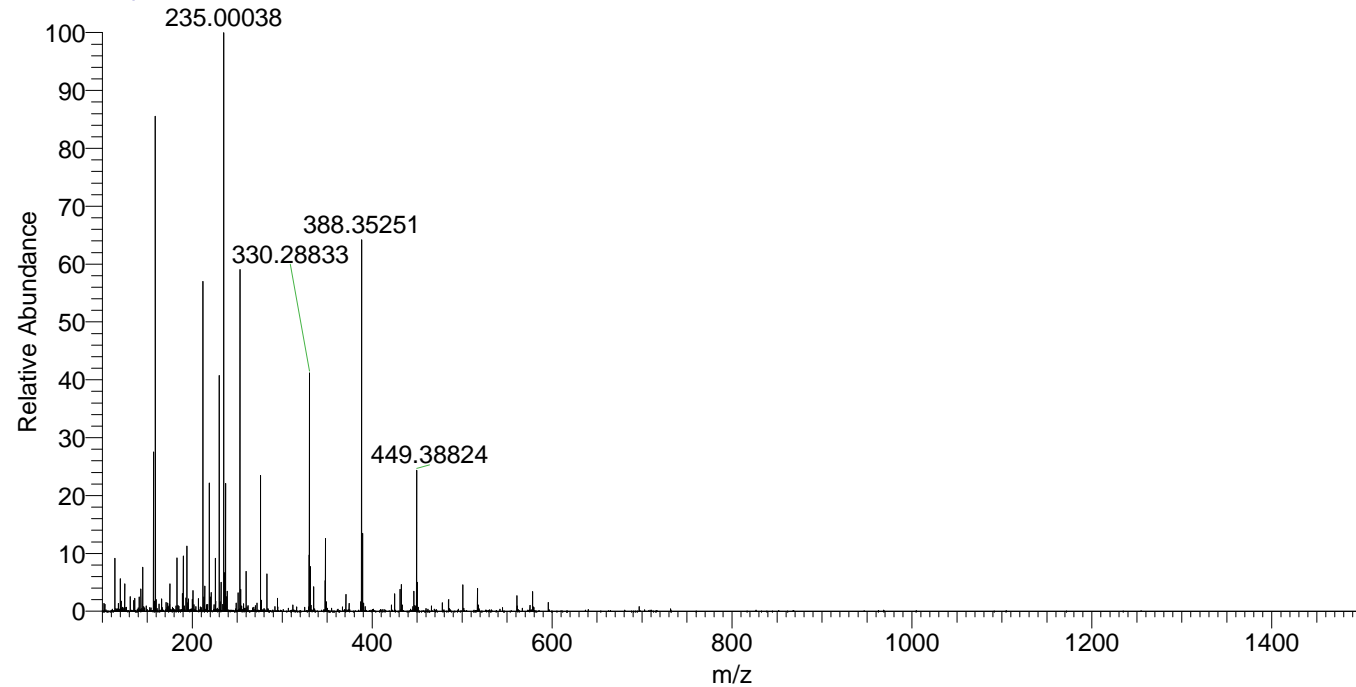
NL: 3.67E6  
 Base Peak m/z=  
 330.28699-330.29029 F:  
 FTMS + p ESI Full ms  
 [100.00-1500.00] MS  
 Pluctuosa\_HDX

NL: 5.46E3  
 Base Peak m/z=  
 166.15054-166.15220 F:  
 FTMS + p ESI Full ms  
 [100.00-1500.00] MS  
 Pluctuosa\_HDX

Pluctuosa\_HDX#348 RT: 2.26  
 T: FTMS + p ESI Full ms [100.00-1500.00]  
 m/z= 330.00000-331.00000

m/z	Intensity	Relative	Delta (ppm)	Composition
330.28833	2877049.3	100.00	0.73	C <sub>17</sub> H <sub>24</sub> <sup>2</sup> H <sub>7</sub> O <sub>2</sub> N <sub>4</sub>
			-3.96	C <sub>17</sub> H <sub>26</sub> <sup>2</sup> H <sub>6</sub> O <sub>2</sub> N <sub>4</sub>

Pluctuosa\_HDX #348 RT: 2.26 AV: 1 NL: 6.89E6  
 T: FTMS + p ESI Full ms [100.00-1500.00]



Pluctuosa\_HDX #348 RT: 2.26 AV: 1 NL: 2.84E6  
 T: FTMS + p ESI Full ms [100.00-1500.00]

