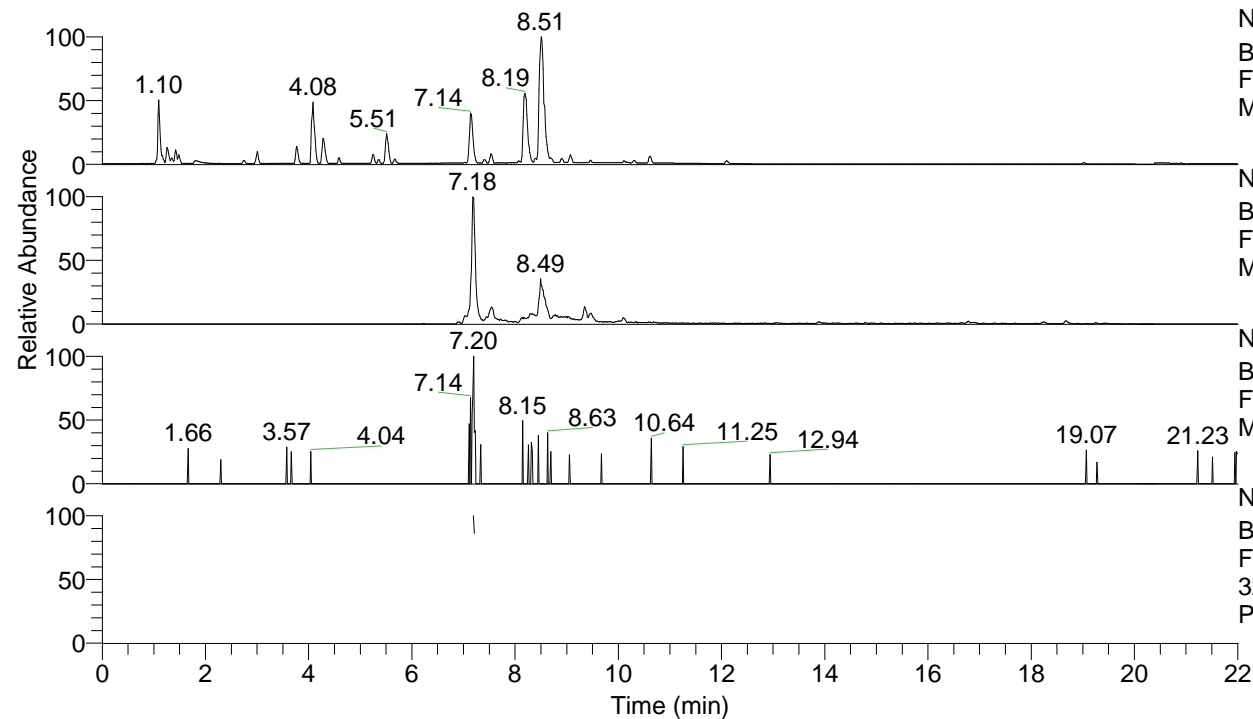


RT: 0.00 - 22.01



NL: 7.88E7
 Base Peak m/z= 100.00000-1500.00000 F:
 FTMS + p ESI Full ms [100.00-1500.00]
 MS Pbirulai

NL: 1.25E6
 Base Peak m/z= 321.18946-321.19588 F:
 FTMS + p ESI Full ms [100.00-1500.00]
 MS Pbirulai

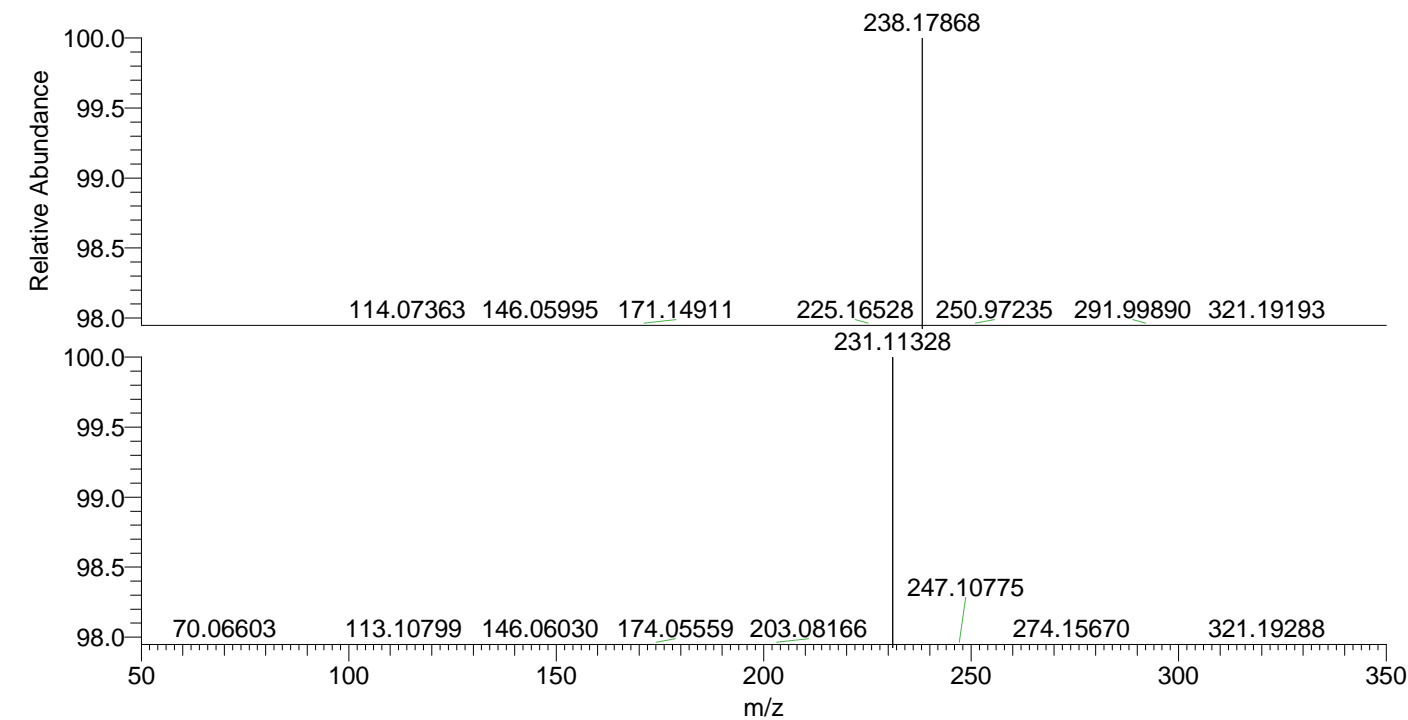
NL: 5.63E3
 Base Peak m/z= 161.09864-161.10186 F:
 FTMS + p ESI Full ms [100.00-1500.00]
 MS Pbirulai

NL: 3.28E5
 Base Peak m/z= 50.00000-1500.00000 F:
 FTMS + p ESI d Full ms2
 321.19@hcd35.00 [50.00-345.00] MS
 Pbirulai

Pbirulai#2874-2880 RT: 7.19-7.21 AV: 2

F: FTMS + p ESI d Full ms2 321.19 ...
 m/z= 50.00000-1000.00000

m/z	Intensity	Relative
58.06614	15362.3	5.15
61.18954	1809.2	0.61
70.06603	41178.5	13.80
73.85196	1500.1	0.50
78.77311	1560.8	0.52
82.73253	1649.1	0.55
103.63624	1616.0	0.54
103.95650	1509.6	0.51
111.30463	1683.2	0.56
113.10799	11842.2	3.97
114.09204	1912.3	0.64
115.12376	3759.9	1.26
131.11820	9072.1	3.04
132.15006	14256.2	4.78
146.06030	123201.4	41.30
148.14496	19265.9	6.46
153.48529	1564.0	0.52
174.05559	14053.0	4.71
191.08090	1739.1	0.58
203.08166	2584.3	0.87
231.09497	1713.7	0.57
231.11328	298314.7	100.00
231.13639	6529.6	2.19
247.10775	1982.8	0.66
274.15670	2780.2	0.93
274.26980	1876.1	0.63
277.03097	1760.6	0.59
304.16668	4124.1	1.38
321.19288	33344.6	11.18



NL: 4.35E6
 Pbirulai#2869 RT: 7.18
 AV: 1 T: FTMS + p ESI
 Full ms [100.00-1500.00]

NL: 2.97E5
 Pbirulai#2778-2947 RT:
 7.19-7.21 AV: 2 F: FTMS
 + p ESI d Full ms2
 321.19@hcd35.00
 [50.00-345.00]