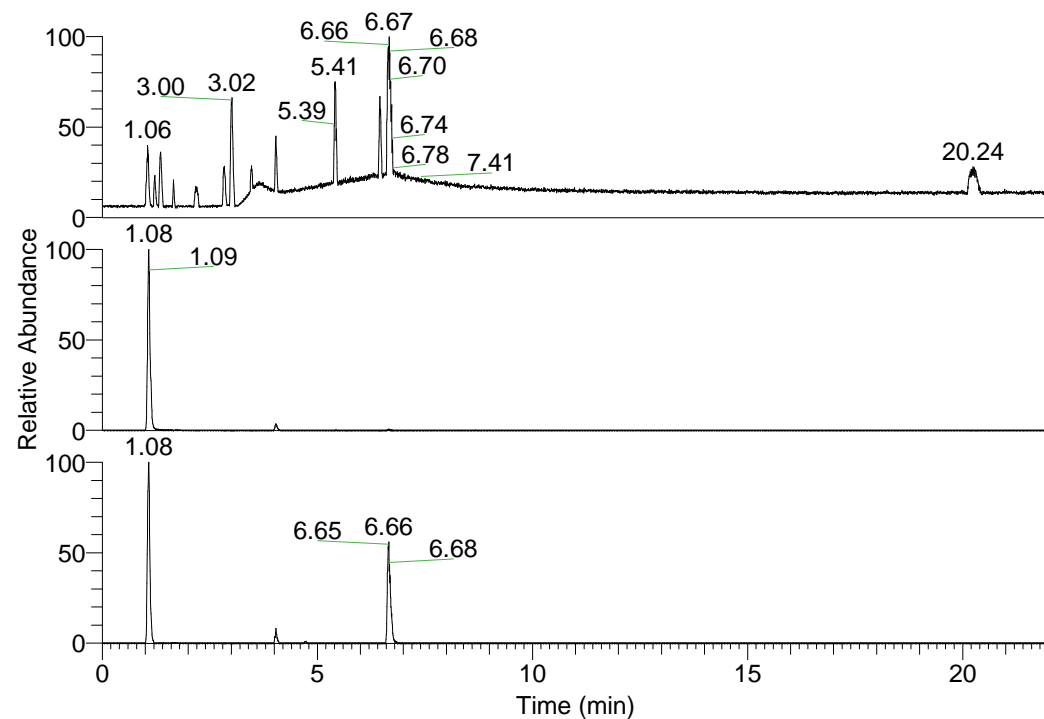


RT: 0.00 - 22.01



NL: 1.25E8  
 Base Peak m/z=  
 100.00000-1500.00000 F:  
 FTMS + p ESI Full ms  
 [100.00-1500.00] MS  
 Pluctuosa\_HDX

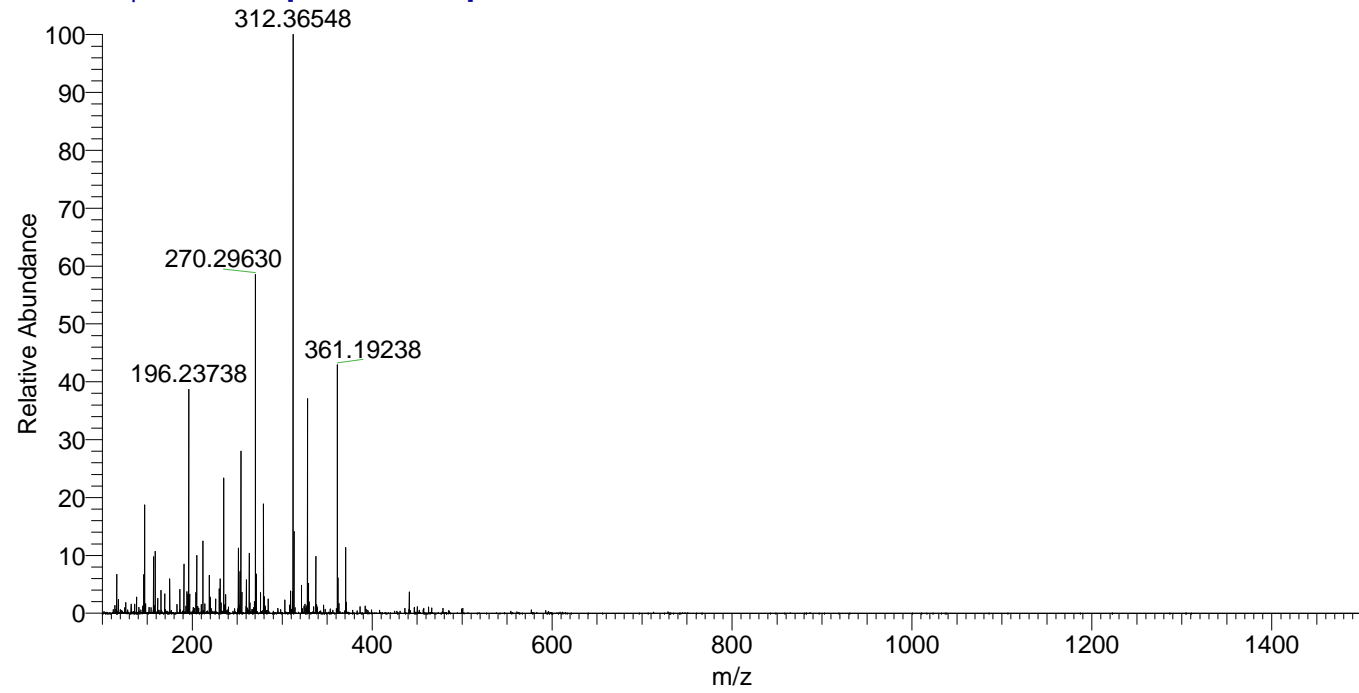
Pluctuosa\_HDX#163 RT: 1.08  
 T: FTMS + p ESI Full ms [100.00-1500.00]  
 m/z= 328.00000-329.00000

m/z	Intensity	Relative	Delta (ppm)	Composition
328.36038	13110594.0	100.00	0.09	C <sub>14</sub> H <sub>26</sub> <sup>2</sup> H <sub>10</sub> ON <sub>7</sub>
			-4.63	C <sub>14</sub> H <sub>28</sub> <sup>2</sup> H <sub>9</sub> ON <sub>7</sub>
			4.80	C <sub>14</sub> H <sub>24</sub> <sup>2</sup> H <sub>11</sub> ON <sub>7</sub>

NL: 1.33E7  
 Base Peak m/z=  
 328.35926-328.36254 F:  
 FTMS + p ESI Full ms  
 [100.00-1500.00] MS  
 Pluctuosa\_HDX

NL: 1.39E6  
 Base Peak m/z=  
 165.18667-165.18833 F:  
 FTMS + p ESI Full ms  
 [100.00-1500.00] MS  
 Pluctuosa\_HDX

Pluctuosa\_HDX #163 RT: 1.08 AV: 1 NL: 3.45E7  
 T: FTMS + p ESI Full ms [100.00-1500.00]



Pluctuosa\_HDX #163 RT: 1.08 AV: 1 NL: 1.28E7  
 T: FTMS + p ESI Full ms [100.00-1500.00]

