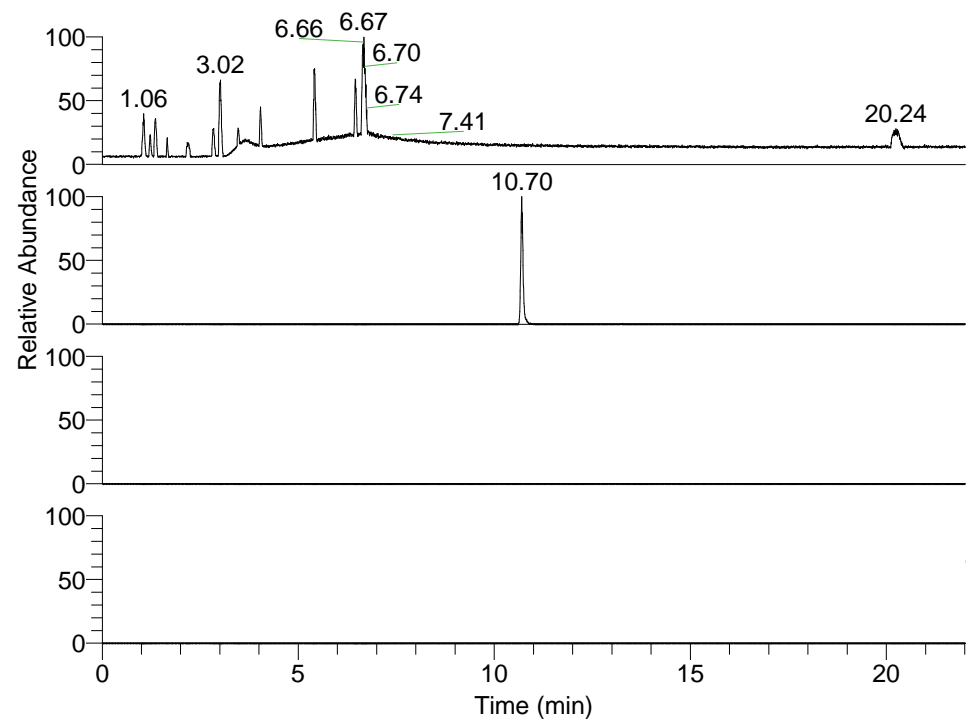


RT: 0.00 - 22.01



NL: 1.25E8
 Base Peak m/z=
 100.00000-1500.00000 F: FTMS + p
 ESI Full ms [100.00-1500.00] MS
 Pluctuosa_HDX

NL: 1.02E6
 Base Peak m/z=
 321.23537-321.23859 F: FTMS + p
 ESI Full ms [100.00-1500.00] MS
 Pluctuosa_HDX

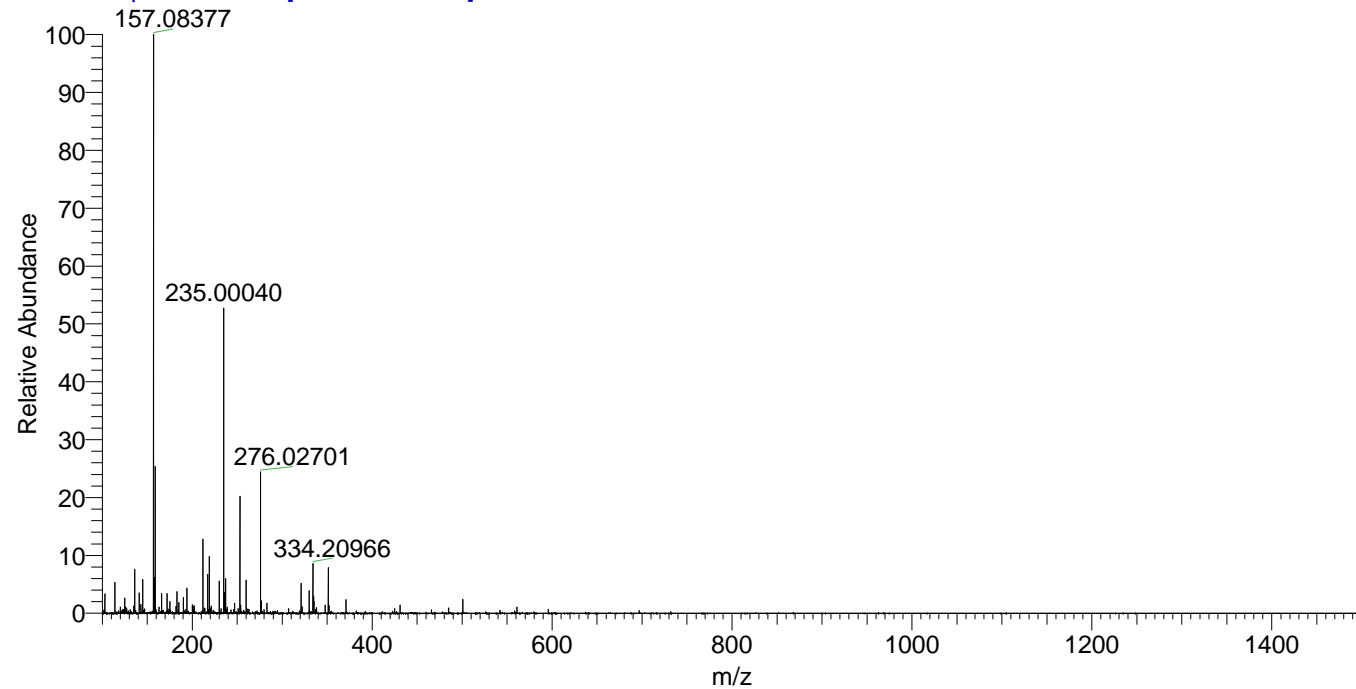
NL: 0
 Base Peak m/z=
 161.62473-161.62635 F: FTMS + p
 ESI Full ms [100.00-1500.00] MS
 Pluctuosa_HDX

NL: 0
 Base Peak m/z=
 436.23394-436.23830 F: FTMS + p
 ESI Full ms [100.00-1500.00] MS
 Pluctuosa_HDX

Pluctuosa_HDX#1728 RT: 10.70
 T: FTMS + p ESI Full ms [100.00-1500.00]
 m/z= 321.00000-322.00000

m/z	Intensity	Relative	Delta (ppm)	Composition
321.23672	1023719.1	100.00	0.91	C ₁₈ H ₂₅ ² H ₃ O ₂ N ₃
			-3.91	C ₁₈ H ₂₇ ² H ₂ O ₂ N ₃

Pluctuosa_HDX #1728 RT: 10.70 AV: 1 NL: 1.97E7
 T: FTMS + p ESI Full ms [100.00-1500.00]



Pluctuosa_HDX #1728 RT: 10.70 AV: 1 NL: 1.02E6
 T: FTMS + p ESI Full ms [100.00-1500.00]

