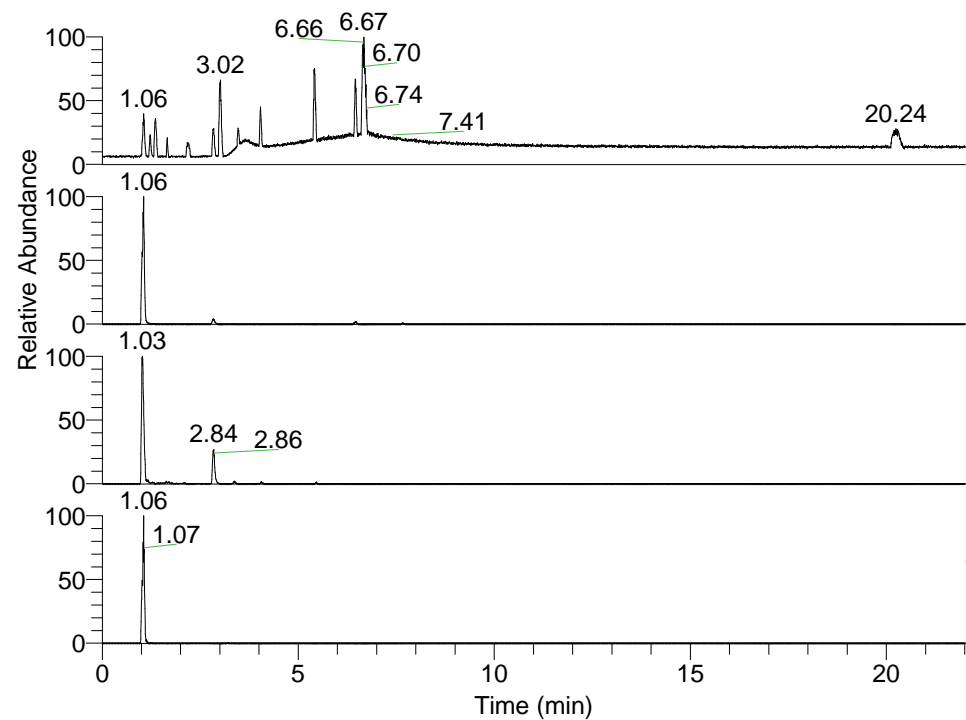


RT: 0.00 - 22.01



NL: 1.25E8
 Base Peak m/z=
 100.00000-1500.00000 F: FTMS + p
 ESI Full ms [100.00-1500.00] MS
 Pluctuosa_HDX

NL: 3.39E6
 Base Peak m/z=
 321.37380-321.37702 F: FTMS + p
 ESI Full ms [100.00-1500.00] MS
 Pluctuosa_HDX

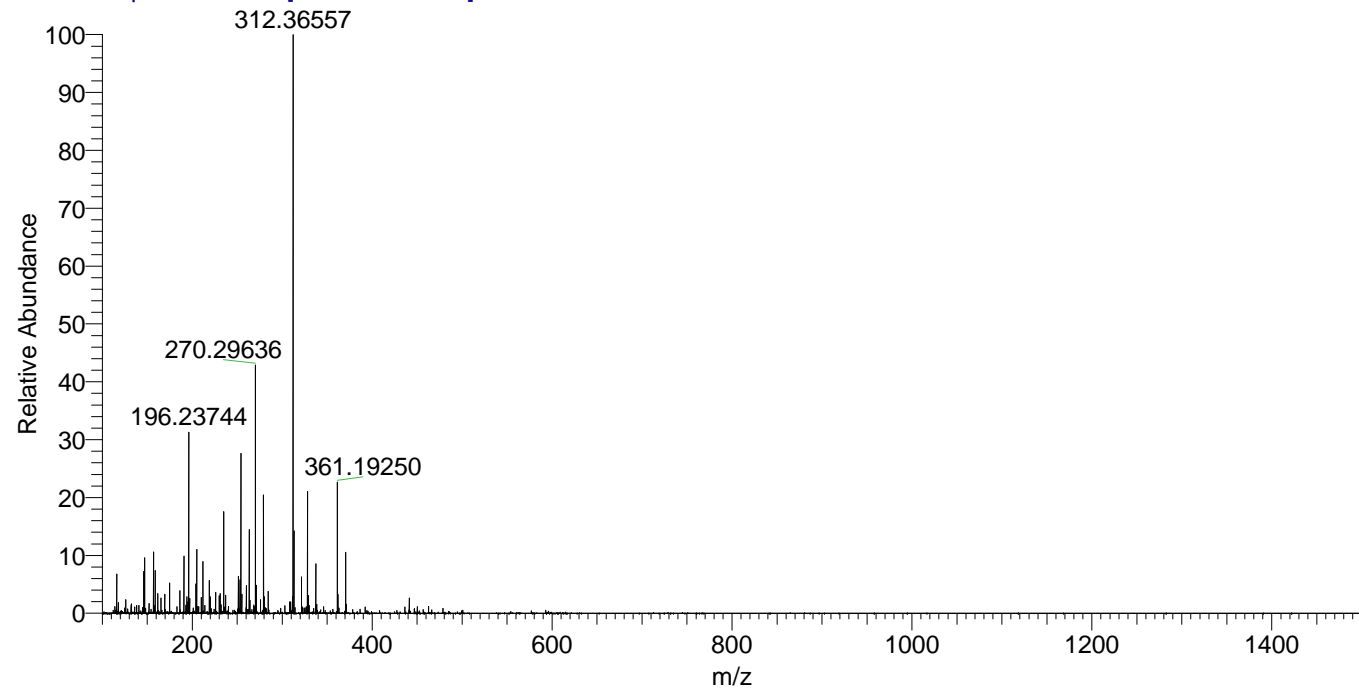
NL: 2.84E6
 Base Peak m/z=
 161.69394-161.69556 F: FTMS + p
 ESI Full ms [100.00-1500.00] MS
 Pluctuosa_HDX

NL: 6.11E5
 Base Peak m/z=
 436.37237-436.37673 F: FTMS + p
 ESI Full ms [100.00-1500.00] MS
 Pluctuosa_HDX

Pluctuosa_HDX#160 RT: 1.06
 T: FTMS + p ESI Full ms [100.00-1500.00]
 m/z= 321.00000-322.00000

m/z	Intensity	Relative	Delta (ppm)	Composition
321.37503	2820801.0	100.00	0.54	C ₁₇ H ₃₇ ² H ₅ N ₅
			-4.28	C ₁₇ H ₃₉ ² H ₄ N ₅

Pluctuosa_HDX #160 RT: 1.06 AV: 1 NL: 4.48E7
 T: FTMS + p ESI Full ms [100.00-1500.00]



Pluctuosa_HDX #160 RT: 1.06 AV: 1 NL: 4.48E7
 T: FTMS + p ESI Full ms [100.00-1500.00]

