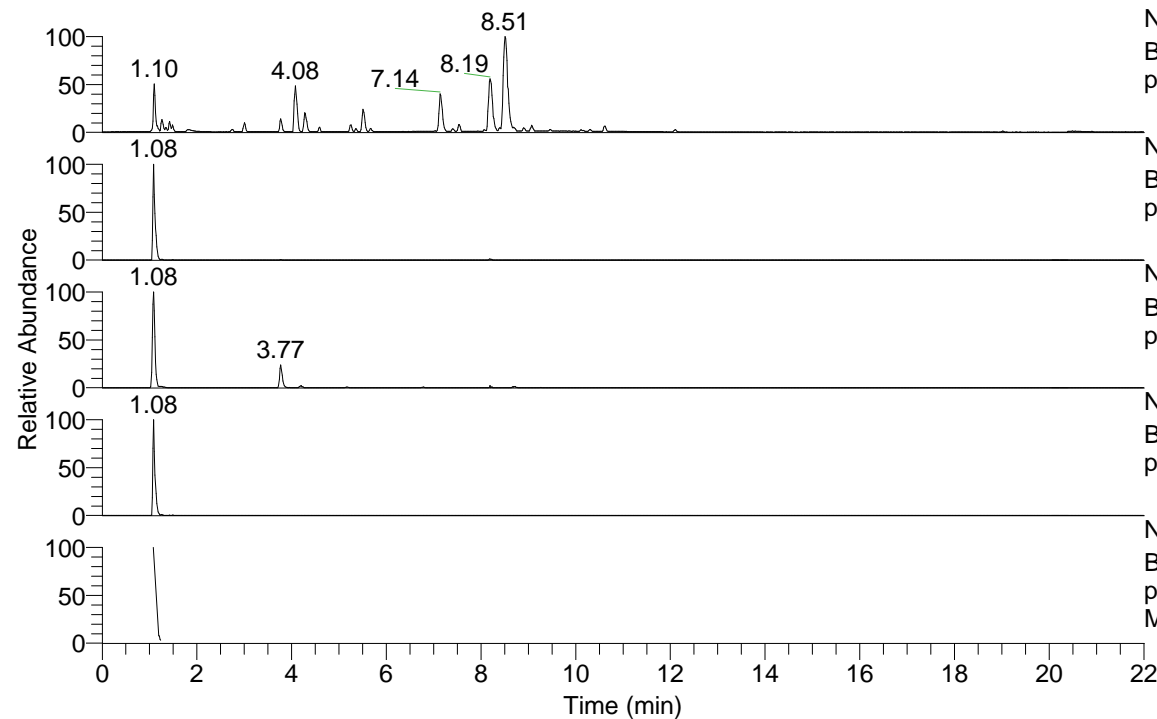


RT: 0.00 - 22.01



NL: 7.88E7
 Base Peak m/z= 100.00000-1500.00000 F: FTMS +
 p ESI Full ms [100.00-1500.00] MS Pbirulai

NL: 7.53E6
 Base Peak m/z= 316.34086-316.34718 F: FTMS +
 p ESI Full ms [100.00-1500.00] MS Pbirulai

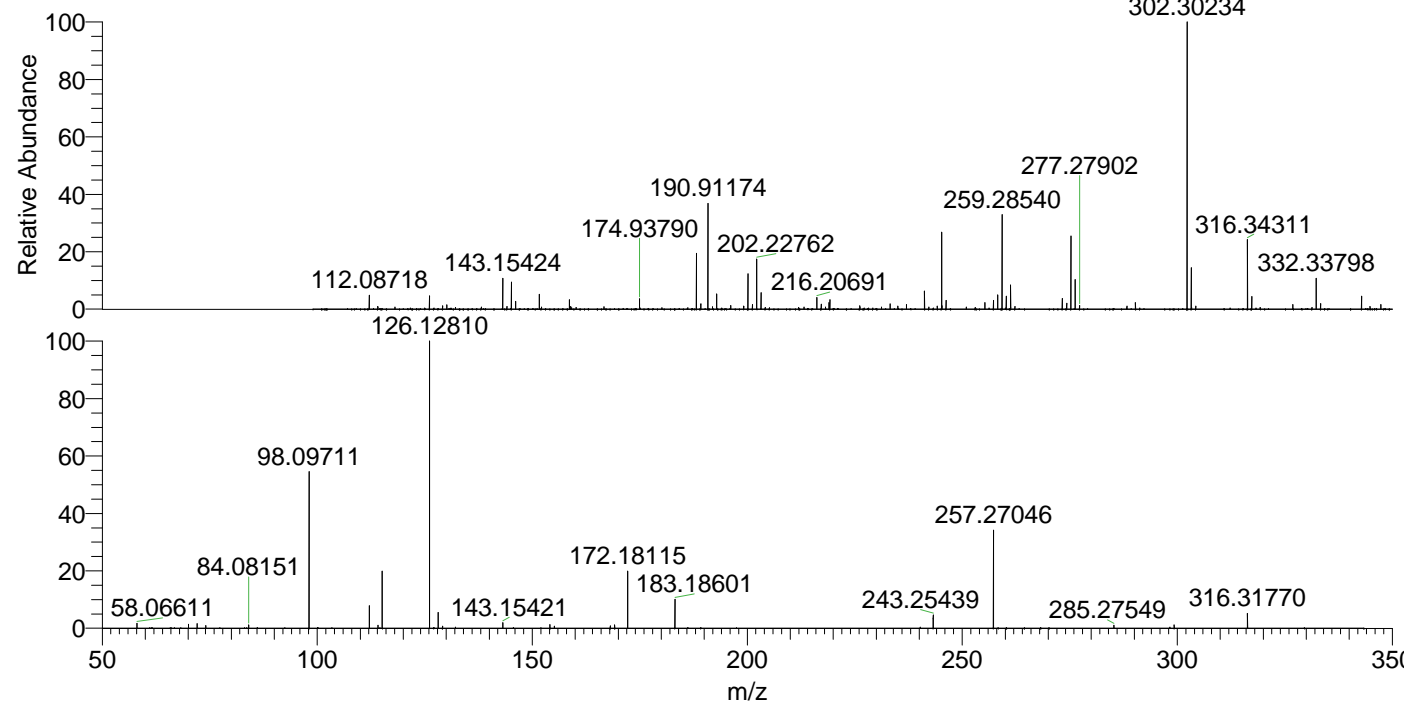
NL: 1.09E6
 Base Peak m/z= 158.67433-158.67751 F: FTMS +
 p ESI Full ms [100.00-1500.00] MS Pbirulai

NL: 1.35E6
 Base Peak m/z= 430.33258-430.34118 F: FTMS +
 p ESI Full ms [100.00-1500.00] MS Pbirulai

NL: 2.00E6
 Base Peak m/z= 50.00000-1500.00000 F: FTMS +
 p ESI d Full ms2 316.32@hcd35.00 [50.00-340.00]
 MS Pbirulai

Pbirulai#431-479 RT: 1.08-1.19 AV: 2
 F: FTMS + p ESI d Full ms2 316.32 ...
 m/z= 50.00000-1000.00000

m/z	Intensity	Relative
58.06611	16758.3	1.76
70.06597	13243.7	1.39
72.08155	15557.6	1.63
74.07203	9010.4	0.95
84.08151	11252.0	1.18
98.09711	510537.6	53.56
112.11243	73667.0	7.73
114.12822	9701.9	1.02
115.12351	185649.9	19.48
126.12810	953253.3	100.00
128.11830	51984.1	5.45
129.13907	6838.9	0.72
143.15421	17838.2	1.87
154.13346	12158.8	1.28
155.15454	7052.1	0.74
168.14978	8211.1	0.86
169.17024	10946.3	1.15
172.18115	186385.8	19.55
183.18601	96048.3	10.08
243.25439	43622.6	4.58
257.27046	318816.3	33.45
285.27549	9879.4	1.04
299.29200	10395.1	1.09
316.31770	48584.5	5.10



NL: 3.10E7
 Pbirulai#433 RT: 1.08
 AV: 1 T: FTMS + p ESI
 Full ms [100.00-1500.00]

NL: 9.32E5
 Pbirulai#425-483 RT:
 1.08-1.19 AV: 2 F: FTMS
 + p ESI d Full ms2
 316.32@hcd35.00
 [50.00-340.00]