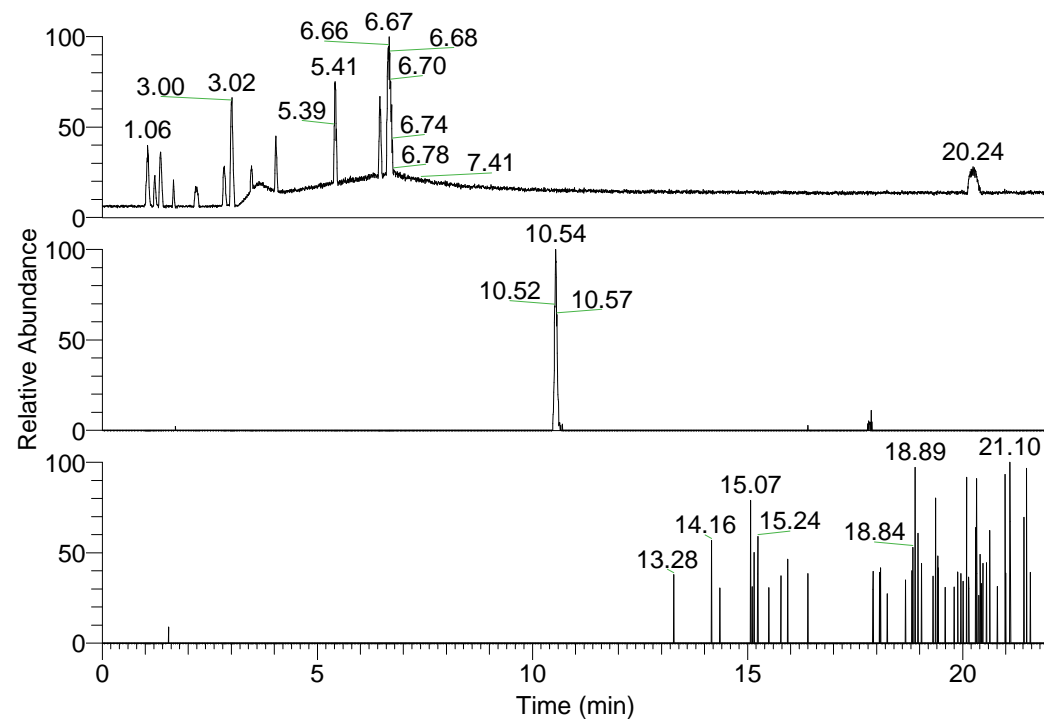


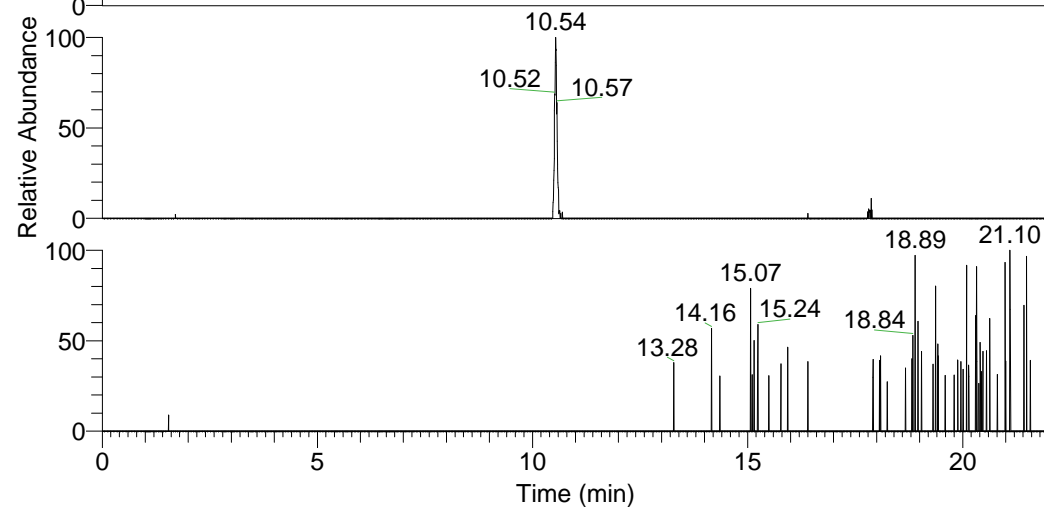
RT: 0.00 - 22.01



NL: 1.25E8
Base Peak m/z=
100.00000-1500.00000 F:
FTMS + p ESI Full ms
[100.00-1500.00] MS
Pluctuosa_HDX

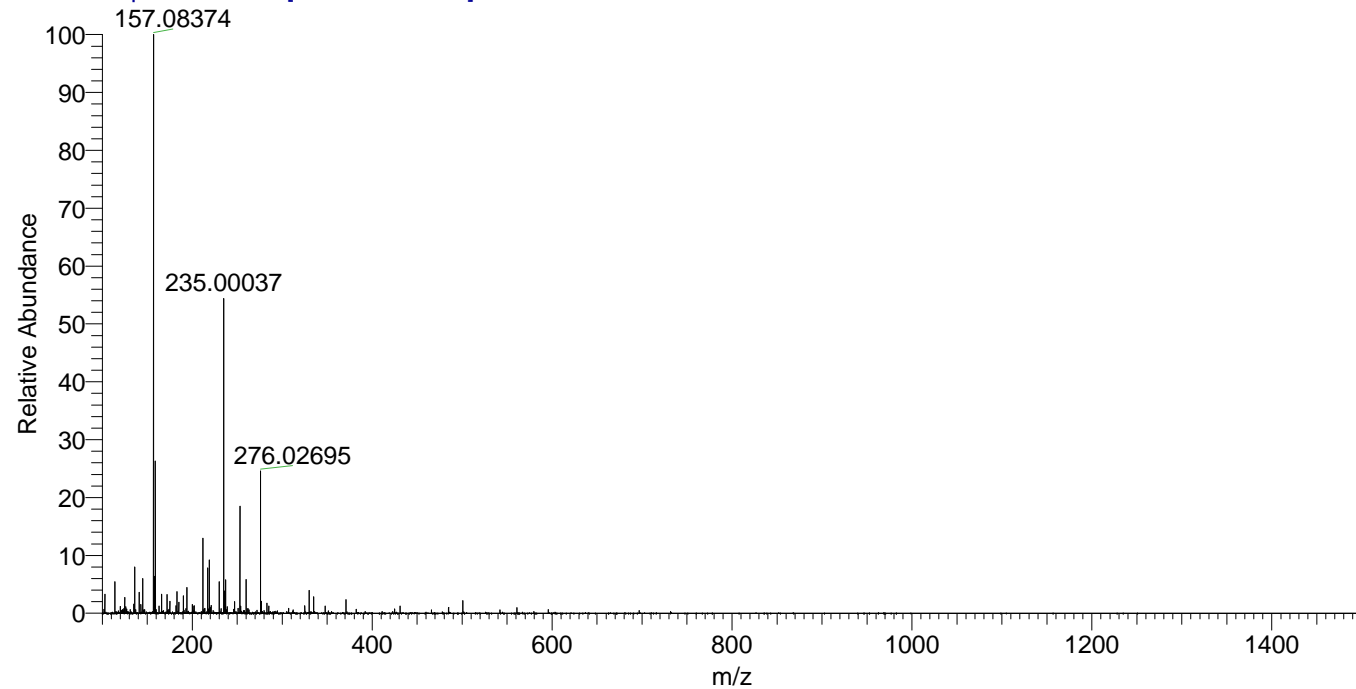
Pluctuosa_HDX#1702 RT: 10.54
T: FTMS + p ESI Full ms [100.00-1500.00]
m/z= 312.00000-313.00000

| m/z | Intensity | Relative | Delta (ppm) | Composition |
|-----------|-----------|----------|-------------|---|
| 312.22717 | 116474.9 | 100.00 | 0.50 | C ₁₅ H ₁₄ ² H ₈ O ₂ N ₅ |
| | | | -4.45 | C ₁₅ H ₁₆ ² H ₇ O ₂ N ₅ |



NL: 1.16E5
Base Peak m/z=
312.22601-312.22913 F:
FTMS + p ESI Full ms
[100.00-1500.00] MS
Pluctuosa_HDX

Pluctuosa_HDX #1702 RT: 10.54 AV: 1 NL: 1.91E7
T: FTMS + p ESI Full ms [100.00-1500.00]



Pluctuosa_HDX #1702 RT: 10.54 AV: 1 NL: 1.63E5
T: FTMS + p ESI Full ms [100.00-1500.00]

