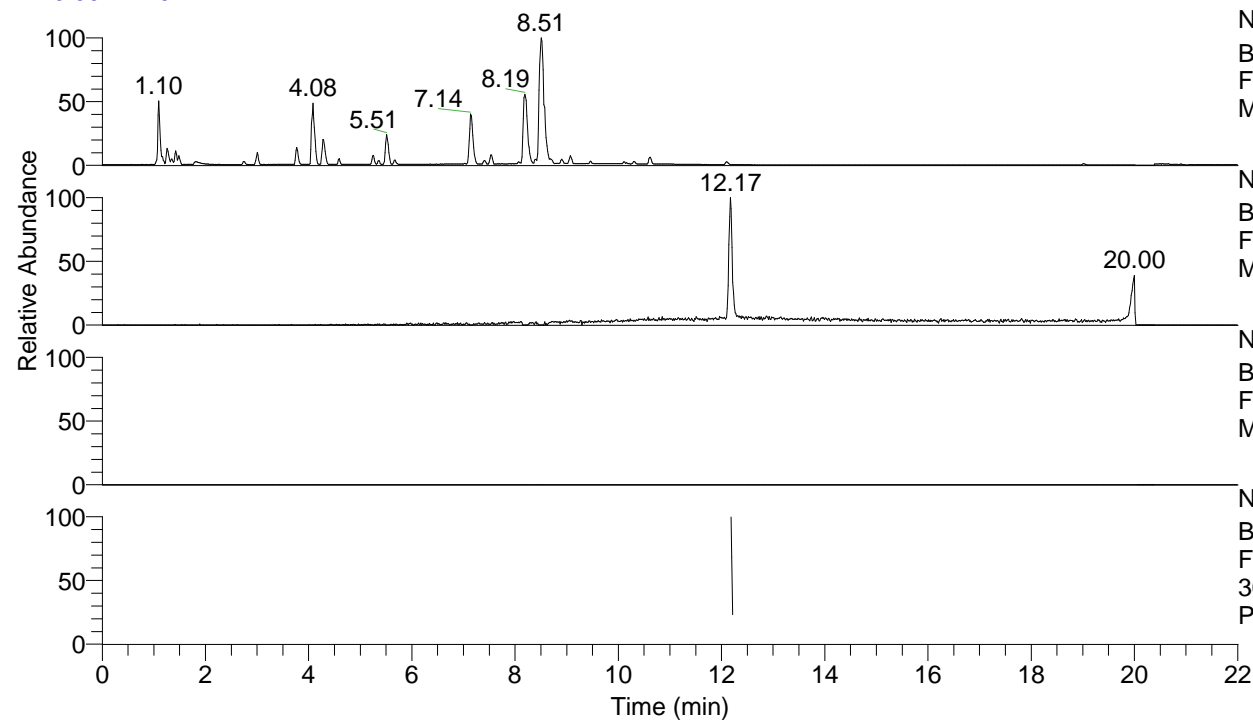


RT: 0.00 - 22.01



NL: 7.88E7
 Base Peak m/z= 100.00000-1500.00000 F:
 FTMS + p ESI Full ms [100.00-1500.00]
 MS Pbirulai

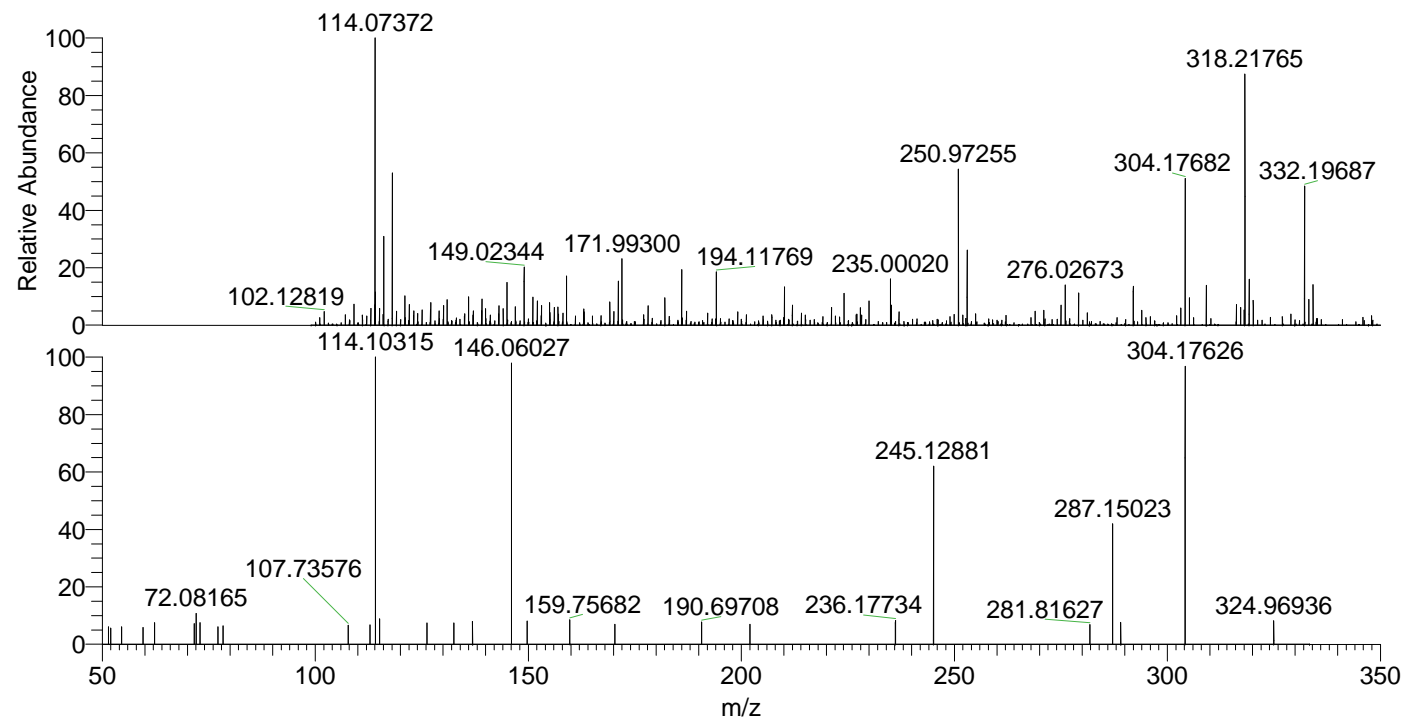
NL: 2.49E5
 Base Peak m/z= 304.17431-304.18039 F:
 FTMS + p ESI Full ms [100.00-1500.00]
 MS Pbirulai

NL: 0
 Base Peak m/z= 152.59106-152.59412 F:
 FTMS + p ESI Full ms [100.00-1500.00]
 MS Pbirulai

NL: 2.61E4
 Base Peak m/z= 50.00000-1500.00000 F:
 FTMS + p ESI d Full ms2
 304.18@hcd35.00 [50.00-330.00] MS
 Pbirulai

Pbirulai#4871-4884 RT: 12.18-12.21
 F: FTMS + p ESI d Full ms2 304.18 ...
 m/z= 50.00000-1000.00000

m/z	Intensity	Relative
51.44700	858.8	5.93
51.99435	802.2	5.54
54.56004	895.4	6.18
59.57946	838.8	5.79
62.25929	1067.7	7.37
71.62619	1053.0	7.27
72.08165	1529.8	10.56
72.95644	1071.9	7.40
77.17293	876.7	6.05
78.37188	940.6	6.49
107.73576	962.7	6.65
112.83318	967.6	6.68
114.10315	14482.8	100.00
115.08725	1261.6	8.71
126.19797	1066.0	7.36
132.52253	1064.4	7.35
136.92113	1135.2	7.84
146.06027	14075.8	97.19
149.73556	1147.8	7.93
159.75682	1211.0	8.36
170.30526	1007.2	6.95
190.69708	1107.8	7.65
202.02852	999.6	6.90
236.17734	1176.1	8.12
245.12881	8822.6	60.92
281.81627	995.5	6.87
287.15023	6063.1	41.86
289.05119	1079.1	7.45
304.17626	14138.6	97.62
324.96936	1201.2	8.29



NL: 4.66E5
 Pbirulai#4867 RT: 12.17
 AV: 1 T: FTMS + p ESI
 Full lock ms
 [100.00-1500.00]

NL: 1.42E4
 Pbirulai#4817-4935 RT:
 12.18-12.21 AV: 3 F:
 FTMS + p ESI d Full ms2
 304.18@hcd35.00
 [50.00-330.00]