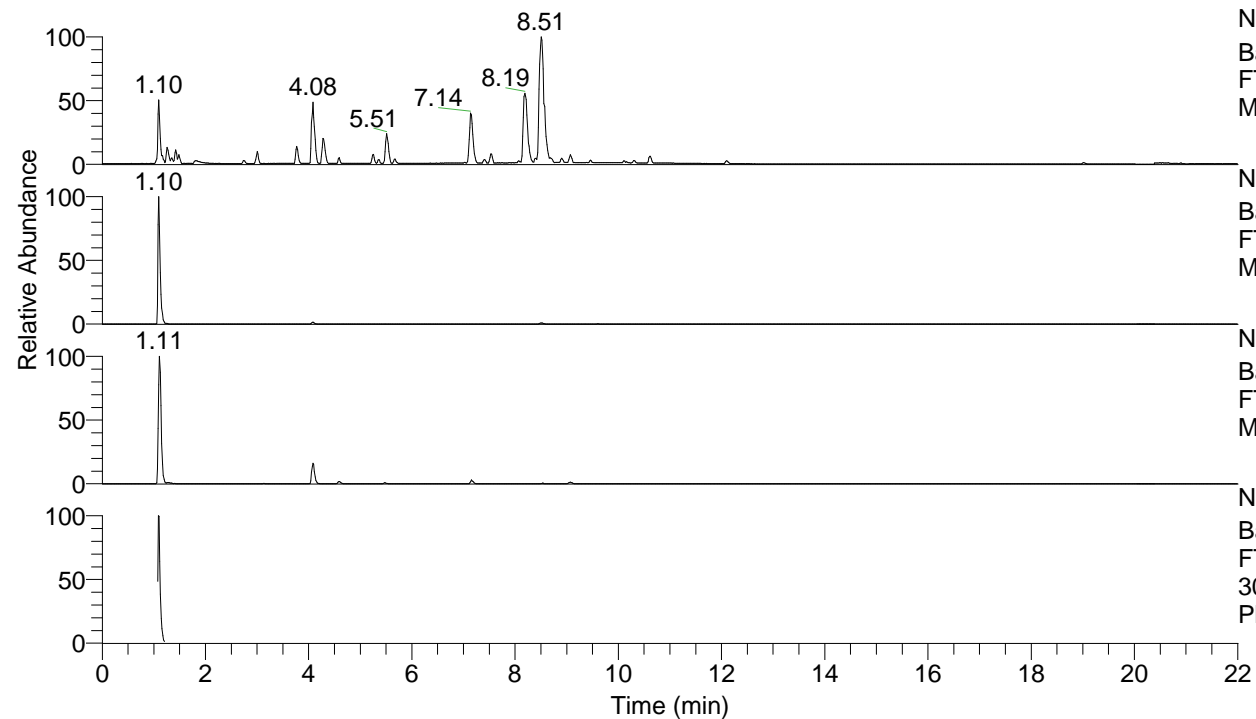


RT: 0.00 - 22.01



NL: 7.88E7
 Base Peak m/z= 100.00000-1500.00000 F:
 FTMS + p ESI Full ms [100.00-1500.00]
 MS Pbirulai

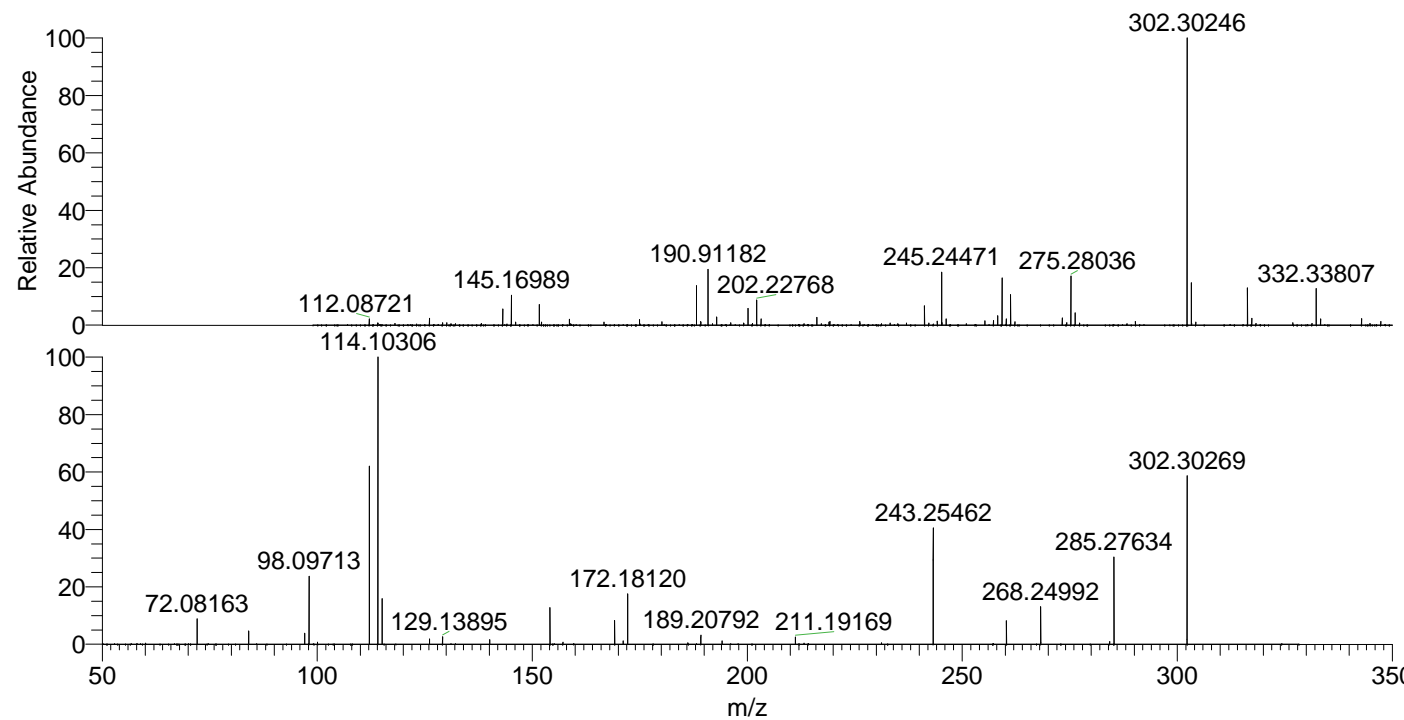
NL: 3.98E7
 Base Peak m/z= 302.30020-302.30624 F:
 FTMS + p ESI Full ms [100.00-1500.00]
 MS Pbirulai

NL: 3.88E6
 Base Peak m/z= 151.65400-151.65704 F:
 FTMS + p ESI Full ms [100.00-1500.00]
 MS Pbirulai

NL: 5.48E6
 Base Peak m/z= 50.00000-1500.00000 F:
 FTMS + p ESI d Full ms2
 302.30@hcd35.00 [50.00-325.00] MS
 Pbirulai

Pbirulai#436-458 RT: 1.09-1.14 AV: 5
 F: FTMS + p ESI d Full ms2 302.30@h ...
 m/z= 50.00000-1000.00000

m/z	Intensity	Relative
72.08163	290921.0	8.87
84.08146	149957.9	4.57
97.07677	125256.1	3.82
98.09713	776237.0	23.67
100.07647	25528.4	0.78
112.11266	2016640.3	61.50
114.10306	3279161.0	100.00
114.12808	131397.7	4.01
115.12351	516195.9	15.74
126.12810	61697.2	1.88
129.13895	88681.4	2.70
140.11845	52965.5	1.62
154.13408	416369.3	12.70
157.13375	23867.5	0.73
169.17024	274111.8	8.36
171.16058	38680.9	1.18
172.18120	574829.9	17.53
186.19705	16754.4	0.51
189.20792	107959.4	3.29
194.16595	38597.4	1.18
211.19169	81478.8	2.48
243.25462	1338125.3	40.81
260.28129	271680.4	8.29
268.24992	426542.3	13.01
284.28096	31595.6	0.96
285.27634	1009090.2	30.77
302.30269	1959628.3	59.76



NL: 3.95E7
 Pbirulai#439 RT: 1.10
 AV: 1 T: FTMS + p ESI
 Full ms [100.00-1500.00]

NL: 3.25E6
 Pbirulai#431-458 RT:
 1.09-1.14 AV: 5 F: FTMS
 + p ESI d Full ms2
 302.30@hcd35.00
 [50.00-325.00]